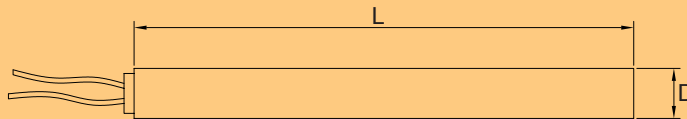


DMS - Diemould
Section 9 - Heating



Cartridge Heater - no thermocouple



The cartridge heater is supplied with 24" glass fibre leads



D	L												
	1"	1 1/2"	2"	2 1/2"	3"	3 1/2"	4"	5"	6"	7"	8"	10"	12"
1/4"	100W	120W or 200W	150W or 250W	65W	260W	260W	400W	305W					
3/8"		100W or 200W	150W or 250W	100W or 300W	250W or 400W	150W or 300W	350W or 500W	280W or 500W	350W or 600W		535W	675W	815W
1/2"			200W	270W or 470W	335W or 535W		275W or 470W	350W or 500W	425W or 735W		685W or 1000W	865W or 1200W	1045W
5/8"			250W		250W or 415W		350W or 585W	450W	325W or 920W		900W or 1500W	1140W	1380W
3/4"									1500W		2000W		

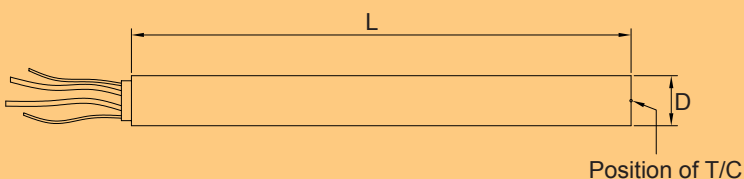
Fitting Notes

HS cartridge heaters are supplied with a -0.003" / -0.005" tolerance.
 Gun drill or ream the hole to nominal size, the better the fit the more watts
 that can be used without damaging the heater.



Cartridge Heater - with thermocouple

'J' - Type
 Thermocouple lead colours
 Black + / White - or Red + / Blue -



The cartridge heater is supplied with 36" glass fibre leads



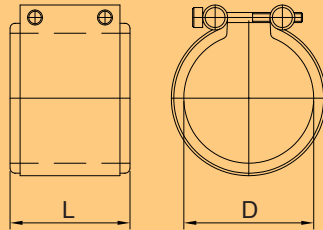
D	L													
	1"	1 1/2"	2"	2 1/2"	3"	3 1/2"	4"	4 1/2"	5"	6"	7"	8"	9"	10"
1/4"	80W	175W	250W	250W	260W		300W	305W						
3/8"		200W	250W	250W	250W	320W	370W	420W	500W	600W	675W	775W		990W
1/2"			250W	270W	335W		470W		625W	735W	900W	1000W	1100W	1200W

Fitting Notes

HTC cartridge heaters are supplied with a -0.003" / -0.005" tolerance.
 Gun drill or ream the hole to nominal size, the better the fit the more watts
 that can be used without damaging the heater.



Band Heater - no thermocouple



The band heater is supplied with 24" glass fibre leads



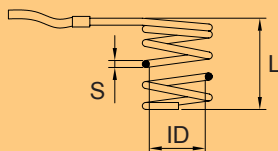
D		L				
		3/4"	1"	1 3/8"	1 1/2"	2"
Imperial	Metric	19mm	25mm	35mm	38mm	50mm
1"	25mm		125W		150W	
1 1/4"	32mm		125W		150W	
1 3/8"	35mm		125W		150W	
1 1/2"	38mm		150W		275W	300W
1 3/4"	45mm				250W	
1 7/8"	48mm	200W				
2"	50mm		200W		250W	
2 1/4"	57mm		250W			
2 3/8"	60mm	200W				
3 1/16"	78mm		350W			
3 1/8"	80mm				400W	
4"	100mm			450W		

Fitting Notes

Use an LTC 100 leaf thermocouple to control your band heater.
 See our thermocouple section for details.



Coil Heaters - no thermocouple



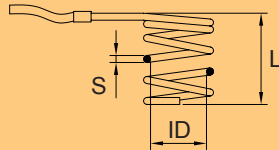
Round section

The coil heater is supplied with braided leads
 1000mm long



ID	S	L	W	✉	Old Sprue Bush Series
8.5mm	3.2mm	33mm	125W	C080330125	Series 30 MSB / NPT 26mm long
		43mm	125W	C080430125	Series 30 MSB / NPT 36mm long
		53mm	180W	C080530180	Series 30 MSB / NPT 46mm long
		93mm	240W	C080930240	Series 30 MSB / NPT 86mm long
		113mm	280W	C081130280	Series 30 MSB / NPT 106mm long
12.7mm	4.1mm	36mm	200W	C120360200	Series 50 ESB / NPT 26mm long
		56mm	315W	C120560315	Series 50 ESB / NPT 46mm long
		76mm	400W	C120760400	Series 50 ESB / NPT 66mm long
		96mm	400W	C120960400	Series 50 ESB / NPT 86mm long
		116mm	500W	C121160500	Series 50 ESB / NPT 106mm long
19.1mm	4.1mm	146mm	500W	C121460500	Series 50 ESB / NPT 136mm long
		55mm	335W	C190550335	Series 56 ESB 46mm long
		75mm	335W	C190750335	Series 56 ESB 66mm long
		95mm	560W	C190950560	Series 56 ESB 86mm long
		125mm	560W	C191250560	Series 56 ESB 116mm long
25.4mm	4.1mm	155mm	835W	C191550835	Series 56 ESB 146mm long
		185mm	630W	C191850835	Series 56 ESB 176mm long
		80mm	630W	C250800630	Series 62 ESB 75mm long
		105mm	630W	C251050630	Series 62 ESB 100mm long
		130mm	790W	C251300790	Series 62 ESB 125mm long
		155mm	790W	C251550790	Series 62 ESB 150mm long
205mm	950W	180mm	950W	C251800950	Series 62 ESB 175mm long
		205mm	950W	C252050950	Series 62 ESB 200mm long

Coil Heaters - no thermocouple




Square section

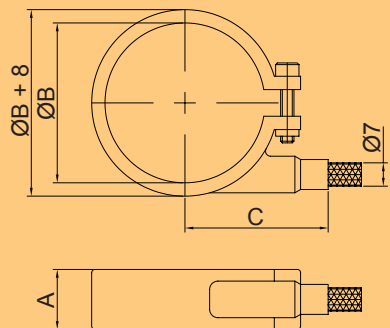
The coil heater is supplied with braided leads
450mm long



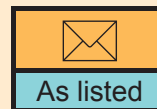
As listed

ID	S	L	W		Old Sprue Bush Series
28mm	2.2mm x 4.4mm	32mm	400W	MRH06	NH2 x 60 / HTB6045
		42mm	550W	MRH07	NH2 x 70 / HTB6057
		52mm	740W	MRH08	NH2 x 70 / HTB6070
		72mm	670W	MRH10	NH2 x 100 / HTB6083
		92mm	550W	MRH12	NH2 x 120
100mm	5mm x 5mm	33mm	800W	HT10033	Minifold 52

Band Heaters - with thermocouple

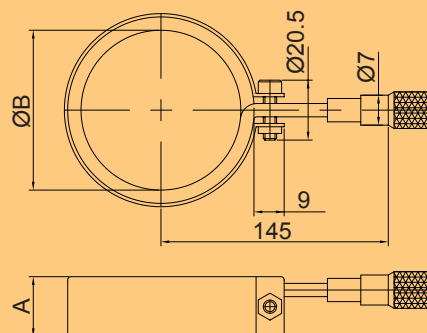


The band heater is supplied with braided leads 950mm long



A	B	C	Wattage	ⓧ
17mm	30mm	25mm	100W	B030018100
18mm	48mm	43mm	180W	B048020180
18mm	55mm	55mm	180W	B055020180
18mm	60mm	55mm	180W	B060020180

Band Heaters - without thermocouple



The band heater is supplied with braided leads 950mm long



A	B	Wattage	ⓧ
13mm	28mm	180W	B028013180
15mm	47mm	315W	B047015315
15mm	60mm	315W	B060015315



Thermocouples

SN 05
 This collet is for use on the NTC range of thermocouples.

'J' - type
 Thermocouple lead colours
 Black + / White - or Red + / Blue -



D	L	P	✉	Old Sprue Bush Series
1mm	1000mm	45mm	TC00140195	All nozzles 26mm & 36mm long
		55mm	TC00140200	All nozzles 46mm long
		75mm	TC00140210	All nozzles 66mm, 75mm & 86mm long
		100mm	TC00140220	All nozzles 116mm, 125mm & 136mm long
		110mm	TC00140230	All nozzles 146mm & 150mm long
		160mm	TC00140250	All nozzles 175mm, 176mm & 200mm long
1.5mm	150mm	50mm	NTC 05 15	These thermocouples support - All NH2 shut off nozzles. All heated flanges. The SN 05 collet is used with this range of thermocouples.
	300mm		NTC 05 30	
	1000mm		NTC 05 100	
	150mm	100mm	NTC 10 15	
	300mm		NTC 10 30	
	1000mm		NTC 10 100	
	150mm		150mm	
	300mm	NTC 15 30		
	1000mm	NTC 15 100		

Thermocouples

'J' - type
 Thermocouple lead colours
 Black + / White - or Red + / Blue -

✉
 As listed

L	✉
150mm	MTC 150
300mm	MTC 300
600mm	MTC 600
1000mm	MTC 1000

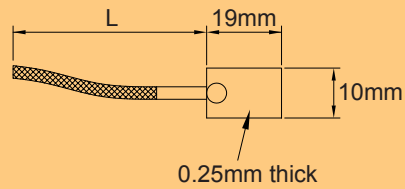
Thermocouples

'J' - type
 Thermocouple lead colours
 Black + / White - or Red + / Blue -

✉
 As listed

P	M	✉
12mm	13mm	MTC 12 100
20mm	21mm	MTC 20 100

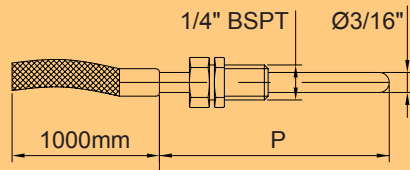
Thermocouples



'J' - type
 Thermocouple lead colours
 Black + / White - or Red + / Blue -



Thermocouples



'J' - type
 Thermocouple lead colours
 Black + / White - or Red + / Blue -



Made to order item.
 Minimum order quantity 2 pieces.
 Advise P dimension and thermocouple type.

Thermocouples

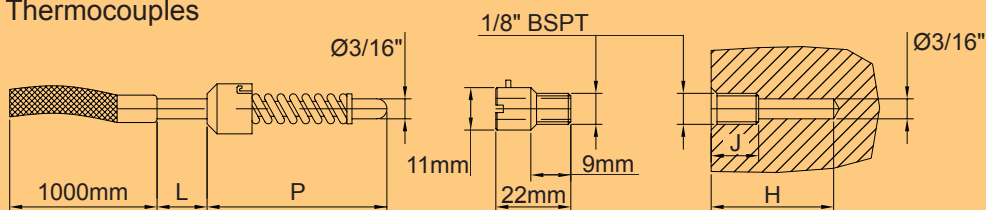


'J' - type
 Thermocouple lead colours
 Black + / White - or Red + / Blue -



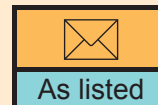
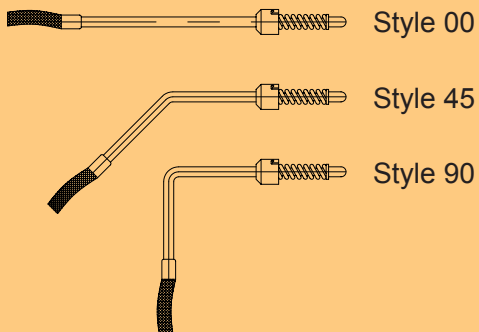
Made to order item.
 Minimum order quantity 2 pieces.
 Advise P dimension and thermocouple type.

Thermocouples



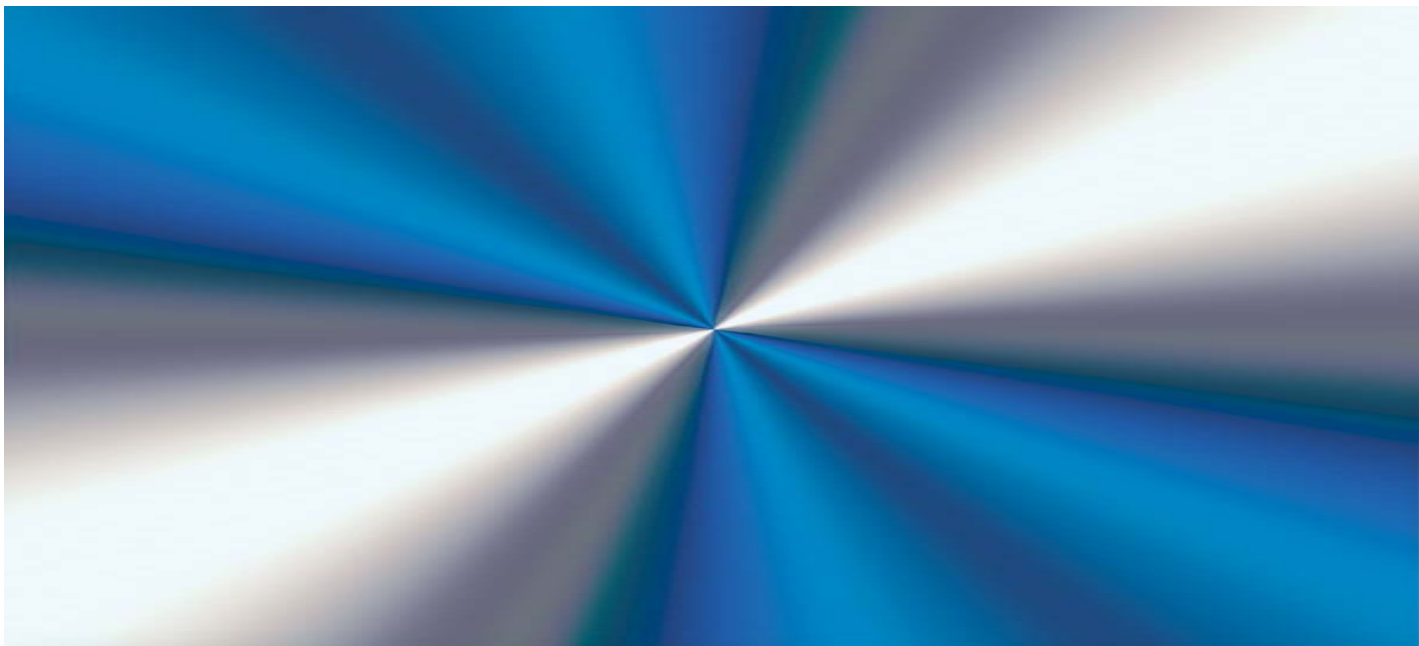
'J' - type
 Thermocouple lead colours
 Black + / White - or Red + / Blue -

Options available



Made to order item.
 Minimum order quantity 2 pieces.
 Advise P and L dimension and thermocouple type.
 Other sizes made to order.

L	J	P	H	✉
50mm	8mm	50mm	15mm - 25mm	BTC-00-050
		75mm	40mm - 50mm	BTC-00-075
		100mm	65mm - 75mm	BTC-00-100
		125mm	90mm - 100mm	BTC-00-125
100mm	8mm	50mm	15mm - 25mm	BTC-45-050
		100mm	65mm - 75mm	BTC-45-100
		50mm	15mm - 25mm	BTC-90-050
		100mm	65mm - 75mm	BTC-90-100



DMS-Diemould

Unit 11, Blenheim Road
Cressex Business Park
High Wycombe
Buckinghamshire
England
HP12 3RS

Tel : + 44 (0) 1494 523811
Fax : + 44 (0) 1494 452898
Web : www.dms-diemould.co.uk
e-mail : sales@dms-diemould.co.uk