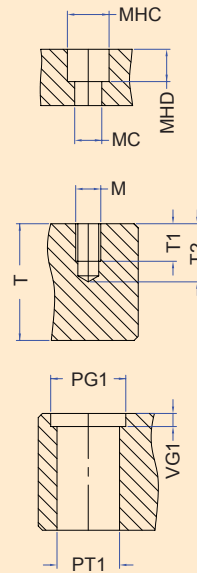
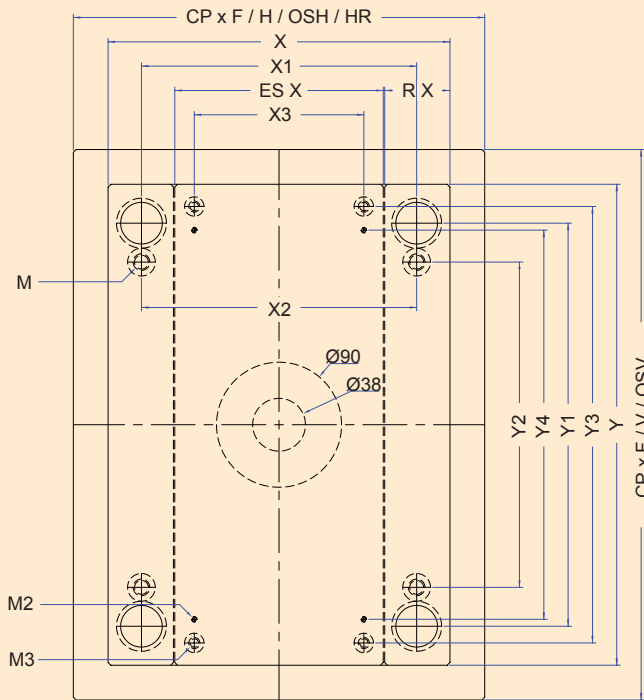


DMS - Diemould
Section 1 - Bored Plates

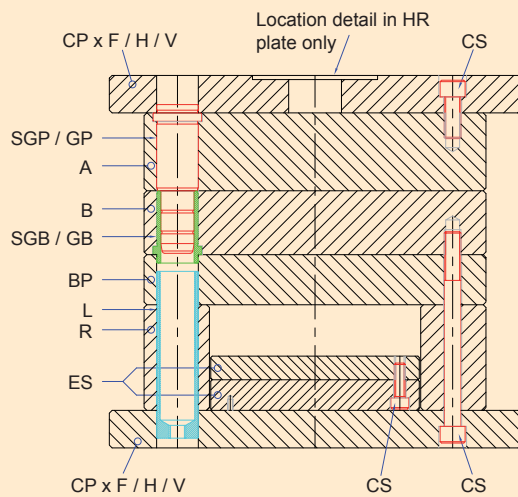
95x95
to
246x496



M	6
MC	6.5
MHC	11.25
MHD	6.5

T=16	T1=10	T2=14
T≥20	T1=12	T2=17

PT1	14 H7
PG1	16.5
VG1	3

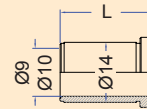
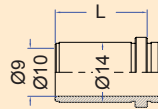
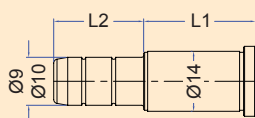
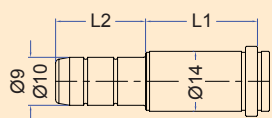


Download CAD data at
www.dms-diemould.co.uk
 enquiries to -
sales@dms-diemould.co.uk

Order Example
 Cavity Plate - Series - Thickness - Material
 A - 95 x 95 - 56 - 1730

●	Standard
◆	Available on request

95 x 95	X	X1	X2	X3	Y	Y1	Y2	Y3	Y4	Thickness (S)	1730	2311	2312	2085	2767
A	95	75	75		95	75	45			16 / 20 / 26 / 36 / 46	●	●	◆	◆	◆
B	95	75	75		95	75	45			16 / 20 / 26 / 36 / 46	●	●	◆	◆	◆
BP	95	75	75		95	75	45			16	●	◆		◆	
CPxF	95	75	75		95	75	45			16	●	◆		◆	
CPxH	125	75	75		95	75	45			16	●	◆		◆	
CPxHR											◆	◆		◆	
CPxOSH											◆	◆		◆	
CPxV	75	75	75		125	75	45			16	●	◆		◆	
CPxOSV											◆	◆		◆	
ES	53				95					15 (6 + 9)	●			◆	
R	20	75	75		95	75	45			26 / 36 / 46	●			◆	

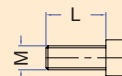
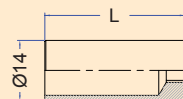


CODE	L1	L2
SGP 9 / 10 - 16 x 15	16	15
SGP 9 / 10 - 16 x 25		25
SGP 9 / 10 - 16 x 35		35
SGP 9 / 10 - 20 x 25	20	25
SGP 9 / 10 - 20 x 35		35
SGP 9 / 10 - 26 x 25	26	25
SGP 9 / 10 - 26 x 35		35
SGP 9 / 10 - 26 x 45		45
SGP 9 / 10 - 26 x 65		65
SGP 9 / 10 - 36 x 25	36	25
SGP 9 / 10 - 36 x 35		35
SGP 9 / 10 - 36 x 45		45
SGP 9 / 10 - 36 x 65		65
SGP 9 / 10 - 46 x 35	46	35
SGP 9 / 10 - 46 x 45		45
SGP 9 / 10 - 46 x 65		65
SGP 9 / 10 - 56 x 45	56	45
SGP 9 / 10 - 56 x 65		65

CODE	L1	L2
GP 9 / 10 - 16 x 15	16	15
GP 9 / 10 - 16 x 25		25
GP 9 / 10 - 16 x 35		35
GP 9 / 10 - 20 x 25	20	25
GP 9 / 10 - 20 x 35		35
GP 9 / 10 - 26 x 25	26	25
GP 9 / 10 - 26 x 35		35
GP 9 / 10 - 26 x 45		45
GP 9 / 10 - 26 x 65		65
GP 9 / 10 - 36 x 25	36	25
GP 9 / 10 - 36 x 35		35
GP 9 / 10 - 36 x 45		45
SP 9 / 10 - 36 x 65		65
GP 9 / 10 - 46 x 35	46	35
GP 9 / 10 - 46 x 45		45
GP 9 / 10 - 46 x 65		65
GP 9 / 10 - 56 x 45	56	45
GP 9 / 10 - 56 x 65		65

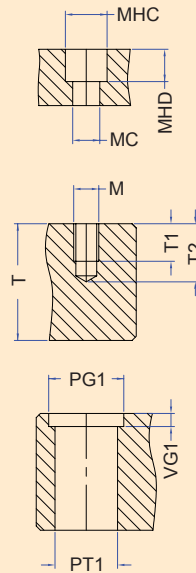
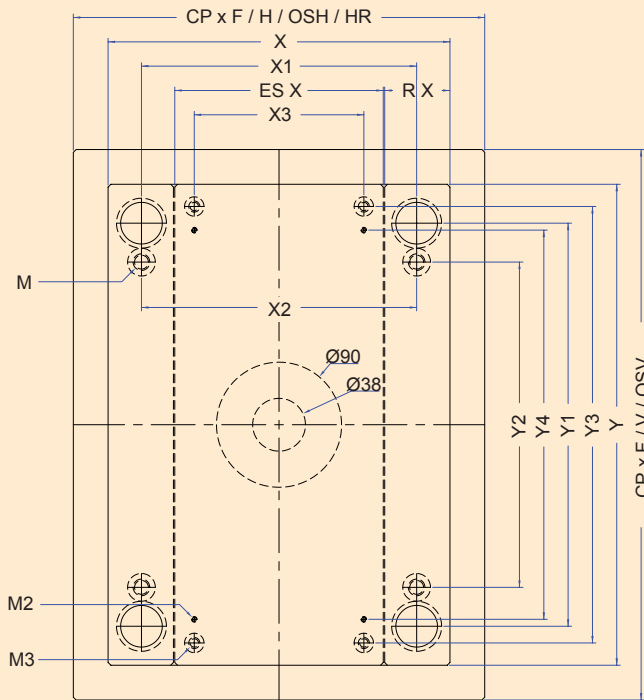
CODE	L
SGB 9 / 10 x 16	16
SGB 9 / 10 x 20	20
SGB 9 / 10 x 26	26
SGB 9 / 10 x 36	36
SGB 9 / 10 x 46	46
SGB 9 / 10 x 56	56

CODE	L
GB 9 / 10 x 16	16
GB 9 / 10 x 20	20
GB 9 / 10 x 26	26
GB 9 / 10 x 36	36
GB 9 / 10 x 46	46
GB 9 / 10 x 56	56



CODE	L
L 14 x 20	20
L 14 x 40	40
L 14 x 50	50
L 14 x 60	60
L 14 x 70	70

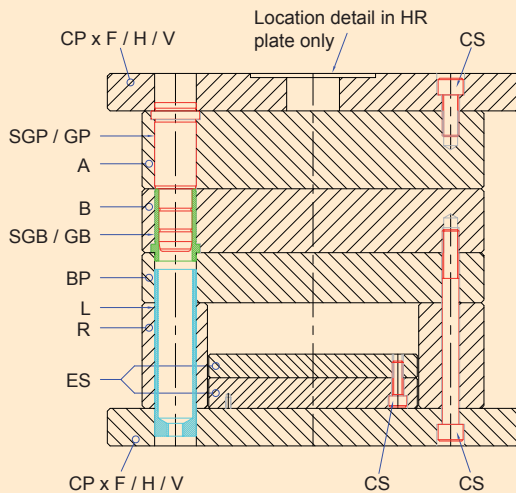
CODE	L
CS 6 x 10	10
CS 6 x 16	16
CS 6 x 20	20
CS 6 x 25	25
CS 6 x 30	30
CS 6 x 35	35
CS 6 x 40	40
CS 6 x 45	45
CS 6 x 50	50
CS 6 x 60	60
CS 6 x 70	70
CS 6 x 80	80
CS 6 x 90	90
CS 6 x 100	100
CS 6 x 110	110
CS 6 x 120	120



M	6
MC	6.5
MHC	11.25
MHD	6.5

T=16	T1=10	T2=14
T≥20	T1=12	T2=17

PT1	14 H7
PG1	16.5
VG1	3

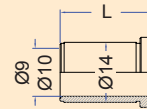
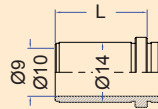
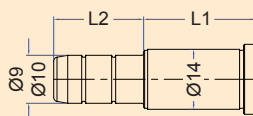
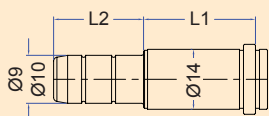


Download CAD data at
www.dms-diemould.co.uk
 enquiries to -
sales@dms-diemould.co.uk

Order Example
 Cavity Plate - Series - Thickness - Material
 A - 100 x 125 - 56 - 1730

●	Standard
◆	Available on request

100 x 125	X	X1	X2	X3	Y	Y1	Y2	Y3	Y4	Thickness (S)					
A	100	80	80		125	103	67			16 / 20 / 26 / 36 / 46 / 56	●	●	◆	◆	◆
B	100	80	80		125	103	67			16 / 20 / 26 / 36 / 46 / 56	●	●	◆	◆	◆
BP	100	80	80		125	103	67			16	●	◆		◆	
CPxF	100	80	80		125	103	67			16	●	◆		◆	
CPxH	125	80	80		125	103	67			16	●	◆		◆	
CPxHR											◆	◆		◆	
CPxOSH	156	80	80		125	103	67			16	●	◆		◆	
CPxV	100	80	80		156	103	67			16	●	◆		◆	
CPxOSV	100	80	80		196	103	67			16	●	◆		◆	
ES	58				125					15 (6 + 9)	●			◆	
R	20	80	80		125	103	67			26 / 36 / 46	●			◆	

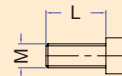
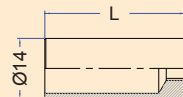


CODE	L1	L2
SGP 9 / 10 - 16 x 15	16	15
SGP 9 / 10 - 16 x 25		25
SGP 9 / 10 - 16 x 35		35
SGP 9 / 10 - 20 x 25	20	25
SGP 9 / 10 - 20 x 35		35
SGP 9 / 10 - 26 x 25	26	25
SGP 9 / 10 - 26 x 35		35
SGP 9 / 10 - 26 x 45		45
SGP 9 / 10 - 26 x 65		65
SGP 9 / 10 - 36 x 25	36	25
SGP 9 / 10 - 36 x 35		35
SGP 9 / 10 - 36 x 45		45
SGP 9 / 10 - 36 x 65		65
SGP 9 / 10 - 46 x 35	46	35
SGP 9 / 10 - 46 x 45		45
SGP 9 / 10 - 46 x 65		65
SGP 9 / 10 - 56 x 45	56	45
SGP 9 / 10 - 56 x 65		65

CODE	L1	L2
GP 9 / 10 - 16 x 15	16	15
GP 9 / 10 - 16 x 25		25
GP 9 / 10 - 16 x 35		35
GP 9 / 10 - 20 x 25	20	25
GP 9 / 10 - 20 x 35		35
GP 9 / 10 - 26 x 25	26	25
GP 9 / 10 - 26 x 35		35
GP 9 / 10 - 26 x 45		45
GP 9 / 10 - 26 x 65		65
GP 9 / 10 - 36 x 25	36	25
GP 9 / 10 - 36 x 35		35
GP 9 / 10 - 36 x 45		45
GP 9 / 10 - 36 x 65		65
GP 9 / 10 - 46 x 35	46	35
GP 9 / 10 - 46 x 45		45
GP 9 / 10 - 46 x 65		65
GP 9 / 10 - 56 x 45	56	45
GP 9 / 10 - 56 x 65		65

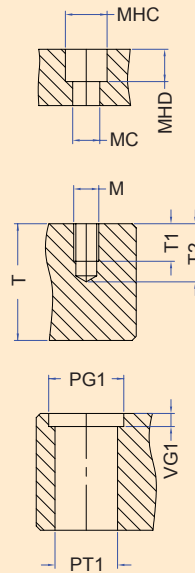
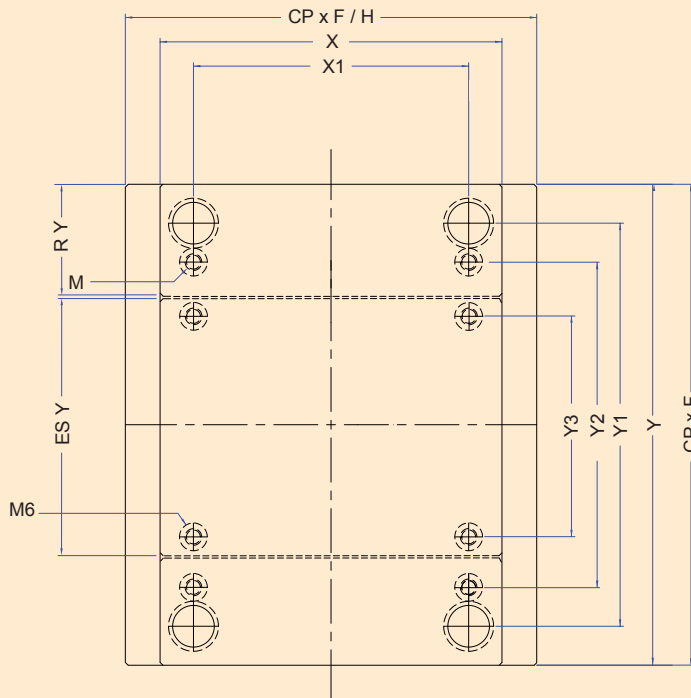
CODE	L
SGB 9 / 10 x 16	16
SGB 9 / 10 x 20	20
SGB 9 / 10 x 26	26
SGB 9 / 10 x 36	36
SGB 9 / 10 x 46	46
SGB 9 / 10 x 56	56

CODE	L
GB 9 / 10 x 16	16
GB 9 / 10 x 20	20
GB 9 / 10 x 26	26
GB 9 / 10 x 36	36
GB 9 / 10 x 46	46
GB 9 / 10 x 56	56



CODE	L
L 14 x 20	20
L 14 x 40	40
L 14 x 50	50
L 14 x 60	60
L 14 x 70	70

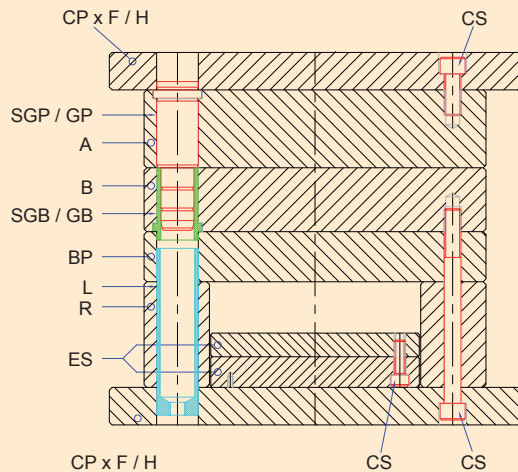
CODE	L
CS 6 x 10	10
CS 6 x 16	16
CS 6 x 20	20
CS 6 x 25	25
CS 6 x 30	30
CS 6 x 35	35
CS 6 x 40	40
CS 6 x 45	45
CS 6 x 50	50
CS 6 x 60	60
CS 6 x 70	70
CS 6 x 80	80
CS 6 x 90	90
CS 6 x 100	100
CS 6 x 110	110
CS 6 x 120	120



M	6
MC	6.5
MHC	11.25
MHD	6.5

T=16	T1=10	T2=14
T≥20	T1=12	T2=17

PT1	14 H7
PG1	16.5
VG1	3

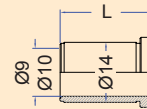
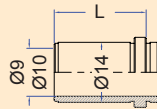
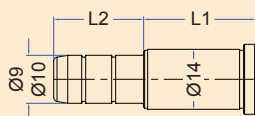
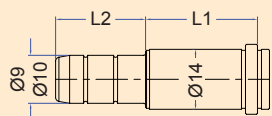


Download CAD data at
www.dms-diemould.co.uk
 enquiries to -
sales@dms-diemould.co.uk

Order Example
 Cavity Plate - Series - Thickness - Material
 A - 100 x 156 - 56 - 1730

●	Standard
◆	Available on request

100 x 125	X	X1	X2	X3	Y	Y1	Y2	Y3	Y4	Thickness (S)	1730	2311	2312	2085	2767
A	100	80			156	134	98			26 / 36 / 56	●	●	◆	◆	◆
B	100	80			156	134	98			26 / 36 / 56	●	●	◆	◆	◆
BP	100	80			156	134	98			16	●	◆		◆	
CPxF	100	80			156	134	98			16	●	◆		◆	
CPxH	125	80			156	134	98			16	●	◆		◆	
CPxOSH	156	80			156	134	98			16	●	◆		◆	
ES	100				84			45		18 (9 + 9)	●			◆	
R	100	80			35	134	98			36 / 56	●			◆	

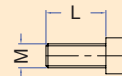
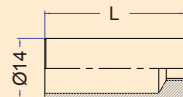


CODE	L1	L2
SGP 9 / 10 - 16 x 15	16	15
SGP 9 / 10 - 16 x 25		25
SGP 9 / 10 - 16 x 35		35
SGP 9 / 10 - 20 x 25	20	25
SGP 9 / 10 - 20 x 35		35
SGP 9 / 10 - 26 x 25	26	25
SGP 9 / 10 - 26 x 35		35
SGP 9 / 10 - 26 x 45		45
SGP 9 / 10 - 26 x 65		65
SGP 9 / 10 - 36 x 25	36	25
SGP 9 / 10 - 36 x 35		35
SGP 9 / 10 - 36 x 45		45
SGP 9 / 10 - 36 x 65		65
SGP 9 / 10 - 46 x 35	46	35
SGP 9 / 10 - 46 x 45		45
SGP 9 / 10 - 46 x 65		65
SGP 9 / 10 - 56 x 45	56	45
SGP 9 / 10 - 56 x 65		65

CODE	L1	L2
GP 9 / 10 - 16 x 15	16	15
GP 9 / 10 - 16 x 25		25
GP 9 / 10 - 16 x 35		35
GP 9 / 10 - 20 x 25	20	25
GP 9 / 10 - 20 x 35		35
GP 9 / 10 - 26 x 25	26	25
GP 9 / 10 - 26 x 35		35
GP 9 / 10 - 26 x 45		45
GP 9 / 10 - 26 x 65		65
GP 9 / 10 - 36 x 25	36	25
GP 9 / 10 - 36 x 35		35
GP 9 / 10 - 36 x 45		45
GP 9 / 10 - 36 x 65		65
GP 9 / 10 - 46 x 35	46	35
GP 9 / 10 - 46 x 45		45
GP 9 / 10 - 46 x 65		65
GP 9 / 10 - 56 x 45	56	45
GP 9 / 10 - 56 x 65		65

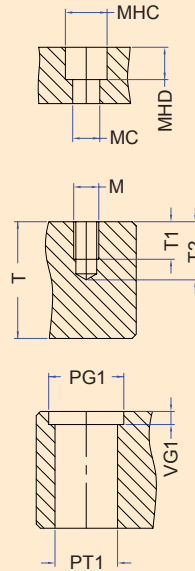
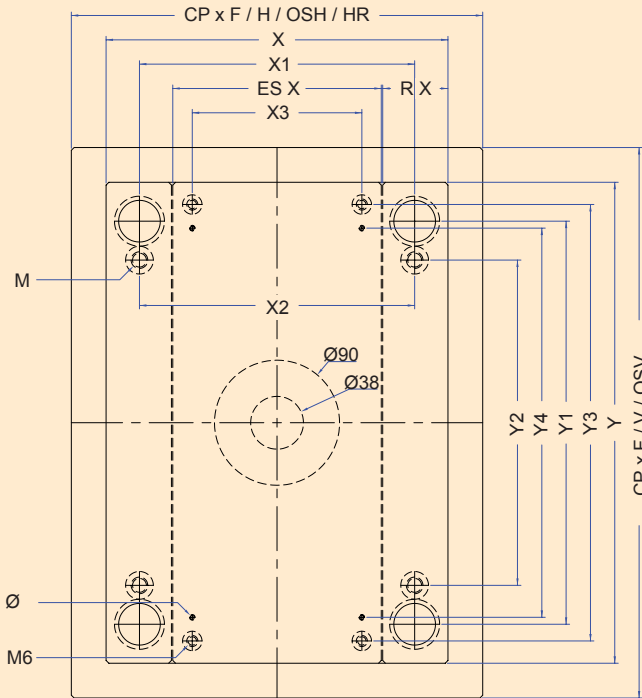
CODE	L
SGB 9 / 10 x 16	16
SGB 9 / 10 x 20	20
SGB 9 / 10 x 26	26
SGB 9 / 10 x 36	36
SGB 9 / 10 x 46	46
SGB 9 / 10 x 56	56

CODE	L
GB 9 / 10 x 16	16
GB 9 / 10 x 20	20
GB 9 / 10 x 26	26
GB 9 / 10 x 36	36
GB 9 / 10 x 46	46
GB 9 / 10 x 56	56



CODE	L
L 14 x 20	20
L 14 x 40	40
L 14 x 50	50
L 14 x 60	60
L 14 x 70	70

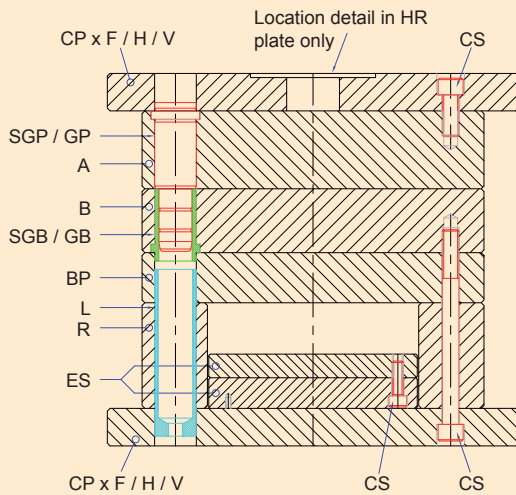
CODE	L
CS 6 x 10	10
CS 6 x 16	16
CS 6 x 20	20
CS 6 x 25	25
CS 6 x 30	30
CS 6 x 35	35
CS 6 x 40	40
CS 6 x 45	45
CS 6 x 50	50
CS 6 x 60	60
CS 6 x 70	70
CS 6 x 80	80
CS 6 x 90	90
CS 6 x 100	100
CS 6 x 110	110
CS 6 x 120	120



M	8
MC	9
MHC	14.25
MHD	8.5

T=16	T1=16	
T=20	T1=12	T2=18
T≥26	T1=16	T2=22

PT1	20 H7
PG1	26
VG1	6

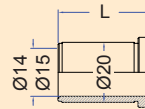
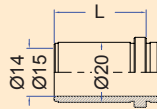
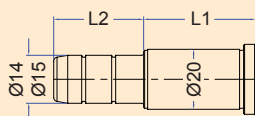
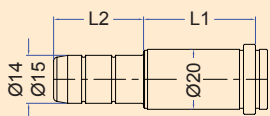


Download CAD data at
www.dms-diemould.co.uk
 enquiries to -
sales@dms-diemould.co.uk

Order Example
 Cavity Plate - Series - Thickness - Material
 A - 125 x 125 - 56 - 1730

●	Standard
◆	Available on request

125 x 125	X	X1	X2	X3	Y	Y1	Y2	Y3	Y4	Thickness (S)				
A	125	96	96		125	95	45			16 / 20 / 26 / 36 / 46 / 56				
B	125	96	96		125	95	45			16 / 20 / 26 / 36 / 46 / 56				
BP	125	96	96		125	95	45			20				
CPxF	125	96	96		125	95	45			16				
CPxH	156	96	96		125	95	45			16				
CPxHR										◆ ◆ ◆ ◆ ◆				
CPxOSH	196	96	96		125	95	45			16				
CPxV	125	96	96		156	95	45			16				
CPxOSV	125	96	96		196	95	45			16				
ES	71			54	125			108		21 (9 + 12)				
R	26	96	96		125	95	45			36 / 46 / 56				

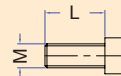
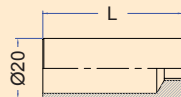


CODE	L1	
SGP 14 / 15 - 16 x 15	16	15
SGP 14 / 15 - 16 x 25		25
SGP 14 / 15 - 16 x 45		45
SGP 14 / 15 - 16 x 65		65
SGP 14 / 15 - 20 x 25	20	25
SGP 14 / 15 - 20 x 35		35
SGP 14 / 15 - 20 x 55		55
SGP 14 / 15 - 20 x 75		75
SGP 14 / 15 - 20 x 100		100
SGP 14 / 15 - 26 x 35	26	35
SGP 14 / 15 - 26 x 45		45
SGP 14 / 15 - 26 x 65		65
SGP 14 / 15 - 26 x 85		85
SGP 14 / 15 - 26 x 100		100
SGP 14 / 15 - 26 x 120		120
SGP 14 / 15 - 26 x 160		160
SGP 14 / 15 - 36 x 35		36
SGP 14 / 15 - 36 x 45	45	
SGP 14 / 15 - 36 x 65	65	
SGP 14 / 15 - 36 x 85	85	
SGP 14 / 15 - 36 x 100	100	
SGP 14 / 15 - 36 x 120	120	
SGP 14 / 15 - 36 x 160	160	
SGP 14 / 15 - 46 x 35	46	
SGP 14 / 15 - 46 x 45		45
SGP 14 / 15 - 46 x 65		65
SGP 14 / 15 - 46 x 85		85
SGP 14 / 15 - 46 x 100		100
SGP 14 / 15 - 46 x 120		120
SGP 14 / 15 - 56 x 45	56	45
SGP 14 / 15 - 56 x 65		65
SGP 14 / 15 - 56 x 100		100
SGP 14 / 15 - 66 x 65	66	65
SGP 14 / 15 - 66 x 100		100
SGP 14 / 15 - 76 x 65	76	65
SGP 14 / 15 - 76 x 100		100

CODE	L1	L2
GP 14 / 15 - 16 x 15	16	15
GP 14 / 15 - 16 x 25		25
GP 14 / 15 - 16 x 45		45
GP 14 / 15 - 16 x 65		65
GP 14 / 15 - 20 x 25	20	25
GP 14 / 15 - 20 x 35		35
GP 14 / 15 - 20 x 55		55
GP 14 / 15 - 20 x 75		75
GP 14 / 15 - 20 x 100		100
GP 14 / 15 - 26 x 35	26	35
GP 14 / 15 - 26 x 45		45
GP 14 / 15 - 26 x 65		65
GP 14 / 15 - 26 x 85		85
GP 14 / 15 - 26 x 100		100
GP 14 / 15 - 26 x 120		120
GP 14 / 15 - 26 x 160		160
GP 14 / 15 - 36 x 35		36
GP 14 / 15 - 36 x 45	45	
GP 14 / 15 - 36 x 65	65	
GP 14 / 15 - 36 x 85	85	
GP 14 / 15 - 36 x 100	100	
GP 14 / 15 - 36 x 120	120	
GP 14 / 15 - 36 x 160	160	
GP 14 / 15 - 46 x 35	46	
GP 14 / 15 - 46 x 45		45
GP 14 / 15 - 46 x 65		65
GP 14 / 15 - 46 x 85		85
GP 14 / 15 - 46 x 100		100
GP 14 / 15 - 46 x 120		120
GP 14 / 15 - 56 x 45	56	45
GP 14 / 15 - 56 x 65		65
GP 14 / 15 - 56 x 100		100
GP 14 / 15 - 66 x 65	66	65
GP 14 / 15 - 66 x 100		100
GP 14 / 15 - 76 x 65	76	65
GP 14 / 15 - 76 x 100		100

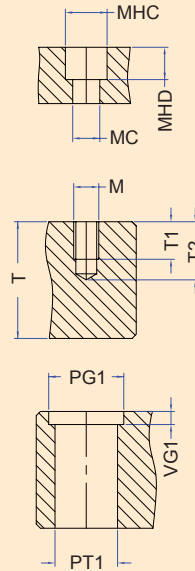
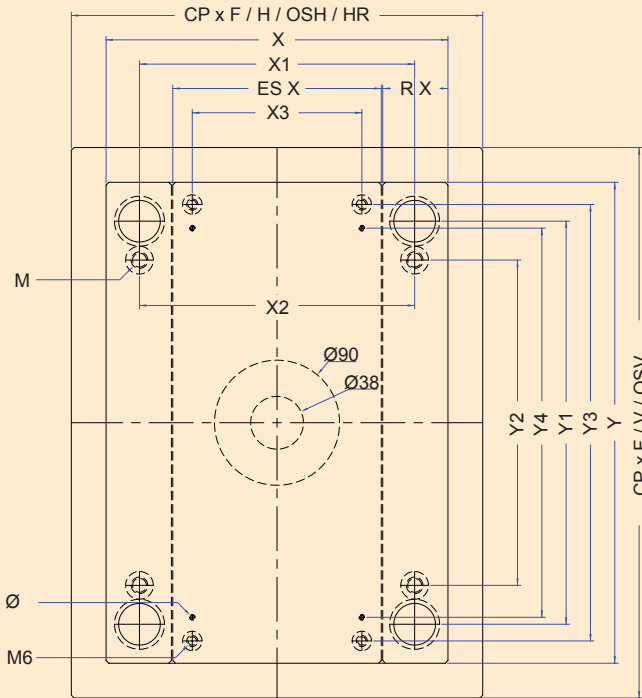
CODE	L
SGB 14 / 15 x 16	16
SGB 14 / 15 x 20	20
SGB 14 / 15 x 26	26
SGB 14 / 15 x 36	36
SGB 14 / 15 x 46	46
SGB 14 / 15 x 56	56
SGB 14 / 15 x 66	66
SGB 14 / 15 x 76	76

CODE	L
GB 14 / 15 x 16	16
GB 14 / 15 x 20	20
GB 14 / 15 x 26	26
GB 14 / 15 x 36	36
GB 14 / 15 x 46	46
GB 14 / 15 x 56	56
GB 14 / 15 x 66	66
GB 14 / 15 x 76	76



CODE	L
L 20 x 30	30
L 20 x 40	40
L 20 x 60	60
L 20 x 80	80
L 20 x 100	100

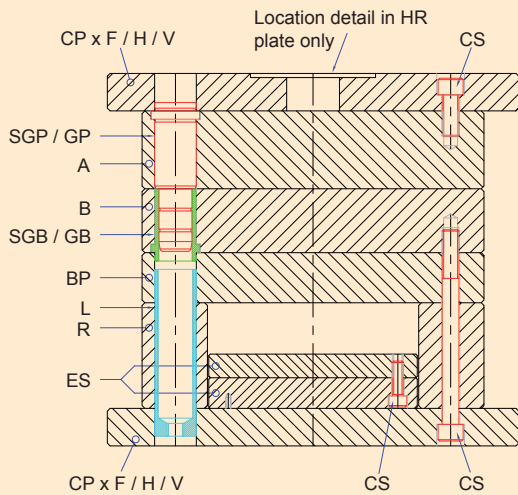
CODE	L
CS 8 x 20	20
CS 8 x 25	25
CS 8 x 30	30
CS 8 x 35	35
CS 8 x 40	40
CS 8 x 45	45
CS 8 x 50	50
CS 8 x 60	60
CS 8 x 70	70
CS 8 x 80	80
CS 8 x 90	90
CS 8 x 100	100
CS 8 x 110	110
CS 8 x 120	120



M	8
MC	9
MHC	14.25
MHD	8.5

T=16	T1=16	
T=20	T1=12	T2=18
T≥26	16	22

PT1	20 H7
PG1	26
VG1	6

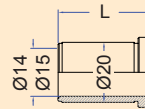
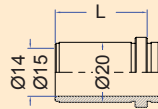
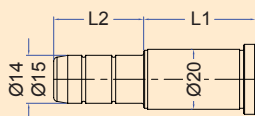
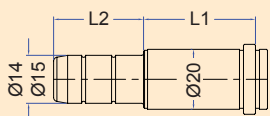


Download CAD data at
www.dms-diemould.co.uk
 enquiries to -
sales@dms-diemould.co.uk

Order Example
 Cavity Plate - Series - Thickness - Material
 A - 125 x 156 - 56 - 1730

●	Standard
◆	Available on request

125 x 156	X	X1	X2	X3	Y	Y1	Y2	Y3	Y4	Thickness (S)				
A	125	96	96		156	126	76			16 / 20 / 26 / 36 / 46 / 56				
B	125	96	96		156	126	76			16 / 20 / 26 / 36 / 46 / 56				
BP	125	96	96		156	126	76			20				
CPxF	125	96	96		156	126	76			16				
CPxH	156	96	96		156	126	76			16				
CPxHR										◆ ◆ ◆ ◆ ◆				
CPxOSH	196	96	96		156	126	76			16				
CPxV	125	96	96		196	126	76			16				
CPxOSV	125	96	96		246	126	76			16				
ES	71			54	156			139		21 (9 + 12)				
R	26	96	96		156	126	76			36 / 46 / 56				

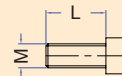
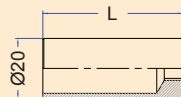


CODE	L1	L2
SGP 14 / 15 - 16 x 15	16	15
SGP 14 / 15 - 16 x 25		25
SGP 14 / 15 - 16 x 45		45
SGP 14 / 15 - 16 x 65		65
SGP 14 / 15 - 20 x 25	20	25
SGP 14 / 15 - 20 x 35		35
SGP 14 / 15 - 20 x 55		55
SGP 14 / 15 - 20 x 75		75
SGP 14 / 15 - 20 x 100		100
SGP 14 / 15 - 26 x 35	26	35
SGP 14 / 15 - 26 x 45		45
SGP 14 / 15 - 26 x 65		65
SGP 14 / 15 - 26 x 85		85
SGP 14 / 15 - 26 x 100		100
SGP 14 / 15 - 26 x 120		120
SGP 14 / 15 - 26 x 160		160
SGP 14 / 15 - 36 x 35	36	35
SGP 14 / 15 - 36 x 45		45
SGP 14 / 15 - 36 x 65		65
SGP 14 / 15 - 36 x 85		85
SGP 14 / 15 - 36 x 100		100
SGP 14 / 15 - 36 x 120		120
SGP 14 / 15 - 36 x 160		160
SGP 14 / 15 - 46 x 35	46	35
SGP 14 / 15 - 46 x 45		45
SGP 14 / 15 - 46 x 65		65
SGP 14 / 15 - 46 x 85		85
SGP 14 / 15 - 46 x 100		100
SGP 14 / 15 - 46 x 120		120
SGP 14 / 15 - 56 x 45	56	45
SGP 14 / 15 - 56 x 65		65
SGP 14 / 15 - 56 x 100		100
SGP 14 / 15 - 66 x 65	66	65
SGP 14 / 15 - 66 x 100		100
SGP 14 / 15 - 76 x 65	76	65
SGP 14 / 15 - 76 x 100		100

CODE	L1	L2
GP 14 / 15 - 16 x 15	16	15
GP 14 / 15 - 16 x 25		25
GP 14 / 15 - 16 x 45		45
GP 14 / 15 - 16 x 65		65
GP 14 / 15 - 20 x 25	20	25
GP 14 / 15 - 20 x 35		35
GP 14 / 15 - 20 x 55		55
GP 14 / 15 - 20 x 75		75
GP 14 / 15 - 20 x 100		100
GP 14 / 15 - 26 x 35	26	35
GP 14 / 15 - 26 x 45		45
GP 14 / 15 - 26 x 65		65
GP 14 / 15 - 26 x 85		85
GP 14 / 15 - 26 x 100		100
GP 14 / 15 - 26 x 120		120
GP 14 / 15 - 26 x 160		160
GP 14 / 15 - 36 x 35	36	35
GP 14 / 15 - 36 x 45		45
GP 14 / 15 - 36 x 65		65
GP 14 / 15 - 36 x 85		85
GP 14 / 15 - 36 x 100		100
GP 14 / 15 - 36 x 120		120
GP 14 / 15 - 36 x 160		160
GP 14 / 15 - 46 x 35	46	35
GP 14 / 15 - 46 x 45		45
GP 14 / 15 - 46 x 65		65
GP 14 / 15 - 46 x 85		85
GP 14 / 15 - 46 x 100		100
GP 14 / 15 - 46 x 120		120
GP 14 / 15 - 56 x 45	56	45
GP 14 / 15 - 56 x 65		65
GP 14 / 15 - 56 x 100		100
GP 14 / 15 - 66 x 65	66	65
GP 14 / 15 - 66 x 100		100
GP 14 / 15 - 76 x 65	76	65
GP 14 / 15 - 76 x 100		100

CODE	L
SGB 14 / 15 x 16	16
SGB 14 / 15 x 20	20
SGB 14 / 15 x 26	26
SGB 14 / 15 x 36	36
SGB 14 / 15 x 46	46
SGB 14 / 15 x 56	56
SGB 14 / 15 x 66	66
SGB 14 / 15 x 76	76

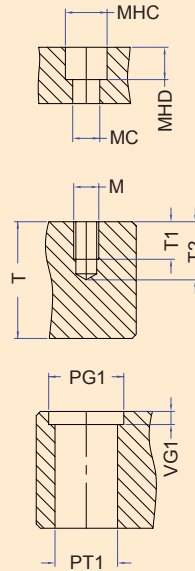
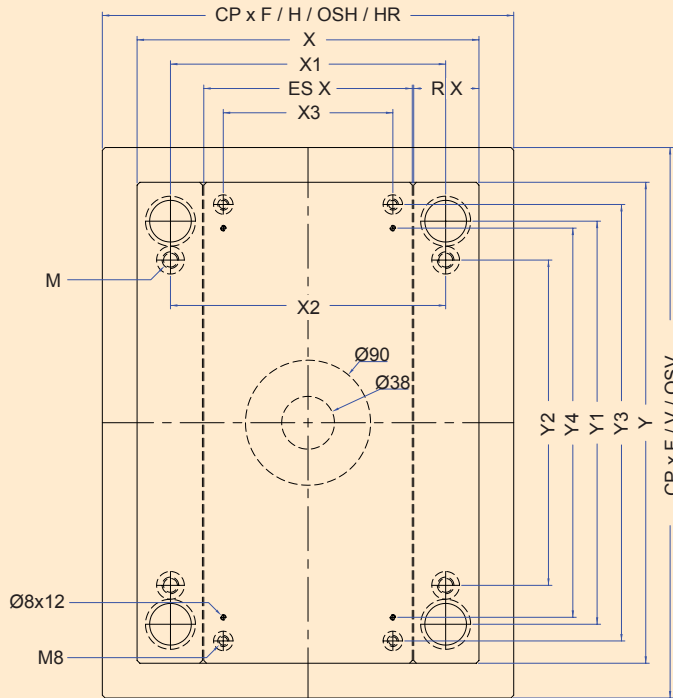
CODE	L
GB 14 / 15 x 16	16
GB 14 / 15 x 20	20
GB 14 / 15 x 26	26
GB 14 / 15 x 36	36
GB 14 / 15 x 46	46
GB 14 / 15 x 56	56
GB 14 / 15 x 66	66
GB 14 / 15 x 76	76



CODE	L
L 20 x 30	30
L 20 x 40	40
L 20 x 60	60
L 20 x 80	80
L 20 x 100	100

CODE	L
CS 8 x 20	20
CS 8 x 25	25
CS 8 x 30	30
CS 8 x 35	35
CS 8 x 40	40
CS 8 x 45	45
CS 8 x 50	50
CS 8 x 60	60
CS 8 x 70	70
CS 8 x 80	80
CS 8 x 90	90
CS 8 x 100	100
CS 8 x 110	110
CS 8 x 120	120

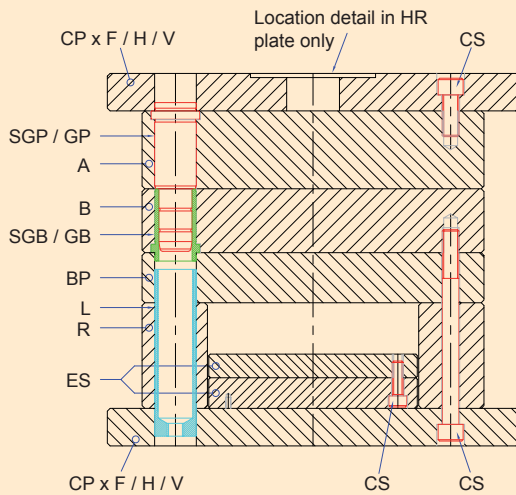
156 x 156



M	10
MC	11
MHC	17.25
MHD	10.5

T=16	T1=16	
T=20	T1=11	T2=18
T=26	T1=16	T2=23
T>26	T1=19	T2=26

PT1	20 H7
PG1	26
VG1	6

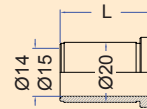
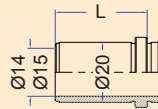
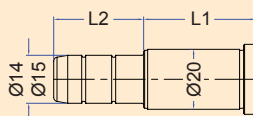
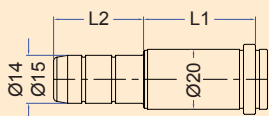


Download CAD data at
www.dms-diemould.co.uk
 enquiries to -
sales@dms-diemould.co.uk

Order Example
 Cavity Plate - Series - Thickness - Material
 A - 156 x 156 - 56 - 1730

●	Standard
◆	Available on request

156 x 156	X	X1	X2	X3	Y	Y1	Y2	Y3	Y4	Thickness (S)					
A	156	122	122		156	122	72			16 / 20 / 26 / 36 / 46 / 56 / 66 / 76	●	●	◆	◆	◆
B	156	122	122		156	122	72			16 / 20 / 26 / 36 / 46 / 56 / 66 / 76	●	●	◆	◆	◆
BP	156	122	122		156	122	72			26	●	◆		◆	
CPxF	156	122	122		156	122	72			20	●	◆		◆	
CPxH	196	122	122		156	122	72			20	●	◆		◆	
CPxHR	196	122	122		156	122	72			20	●	◆		◆	
CPxOSH	246	122	122		156	122	72			20	●	◆		◆	
CPxV	156	122	122		196	122	72			20	●	◆		◆	
CPxOSV	156	122	122		246	122	72			20	●	◆		◆	
ES	90			68	156			134	100	25 (9 + 16)	●			◆	
R	32	122	122		156	122	72			46 / 56 / 76	●			◆	

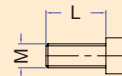
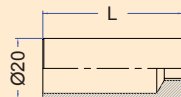


CODE	L1	L2
SGP 14 / 15 - 16 x 15	16	15
SGP 14 / 15 - 16 x 25		25
SGP 14 / 15 - 16 x 45		45
SGP 14 / 15 - 16 x 65		65
SGP 14 / 15 - 20 x 25	20	25
SGP 14 / 15 - 20 x 35		35
SGP 14 / 15 - 20 x 55		55
SGP 14 / 15 - 20 x 75		75
SGP 14 / 15 - 20 x 100		100
SGP 14 / 15 - 26 x 35	26	35
SGP 14 / 15 - 26 x 45		45
SGP 14 / 15 - 26 x 65		65
SGP 14 / 15 - 26 x 85		85
SGP 14 / 15 - 26 x 100		100
SGP 14 / 15 - 26 x 120		120
SGP 14 / 15 - 26 x 160		160
SGP 14 / 15 - 36 x 35	36	35
SGP 14 / 15 - 36 x 45		45
SGP 14 / 15 - 36 x 65		65
SGP 14 / 15 - 36 x 85		85
SGP 14 / 15 - 36 x 100		100
SGP 14 / 15 - 36 x 120		120
SGP 14 / 15 - 36 x 160		160
SGP 14 / 15 - 46 x 35	46	35
SGP 14 / 15 - 46 x 45		45
SGP 14 / 15 - 46 x 65		65
SGP 14 / 15 - 46 x 85		85
SGP 14 / 15 - 46 x 100		100
SGP 14 / 15 - 46 x 120		120
SGP 14 / 15 - 56 x 45	56	45
SGP 14 / 15 - 56 x 65		65
SGP 14 / 15 - 56 x 100		100
SGP 14 / 15 - 66 x 100	66	65
SGP 14 / 15 - 66 x 100		100
SGP 14 / 15 - 76 x 65	76	65
SGP 14 / 15 - 76 x 100		100

CODE	L1	L2
GP 14 / 15 - 16 x 15	16	15
GP 14 / 15 - 16 x 25		25
GP 14 / 15 - 16 x 45		45
GP 14 / 15 - 16 x 65		65
GP 14 / 15 - 20 x 25	20	25
GP 14 / 15 - 20 x 35		35
GP 14 / 15 - 20 x 55		55
GP 14 / 15 - 20 x 75		75
GP 14 / 15 - 20 x 100		100
GP 14 / 15 - 26 x 35	26	35
GP 14 / 15 - 26 x 45		45
GP 14 / 15 - 26 x 65		65
GP 14 / 15 - 26 x 85		85
GP 14 / 15 - 26 x 100		100
GP 14 / 15 - 26 x 120		120
GP 14 / 15 - 26 x 160		160
GP 14 / 15 - 36 x 35	36	35
GP 14 / 15 - 36 x 45		45
GP 14 / 15 - 36 x 65		65
GP 14 / 15 - 36 x 85		85
GP 14 / 15 - 36 x 100		100
GP 14 / 15 - 36 x 120		120
GP 14 / 15 - 36 x 160		160
GP 14 / 15 - 46 x 35	46	35
GP 14 / 15 - 46 x 45		45
GP 14 / 15 - 46 x 65		65
GP 14 / 15 - 46 x 85		85
GP 14 / 15 - 46 x 100		100
GP 14 / 15 - 46 x 120		120
GP 14 / 15 - 56 x 45	56	45
GP 14 / 15 - 56 x 65		65
GP 14 / 15 - 56 x 100		100
GP 14 / 15 - 66 x 100	66	65
GP 14 / 15 - 66 x 100		100
GP 14 / 15 - 76 x 65	76	65
GP 14 / 15 - 76 x 100		100

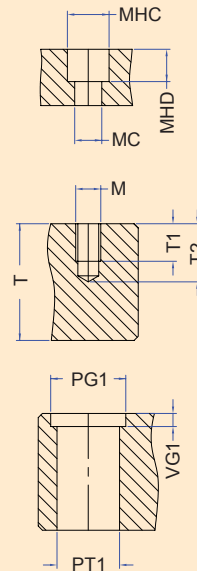
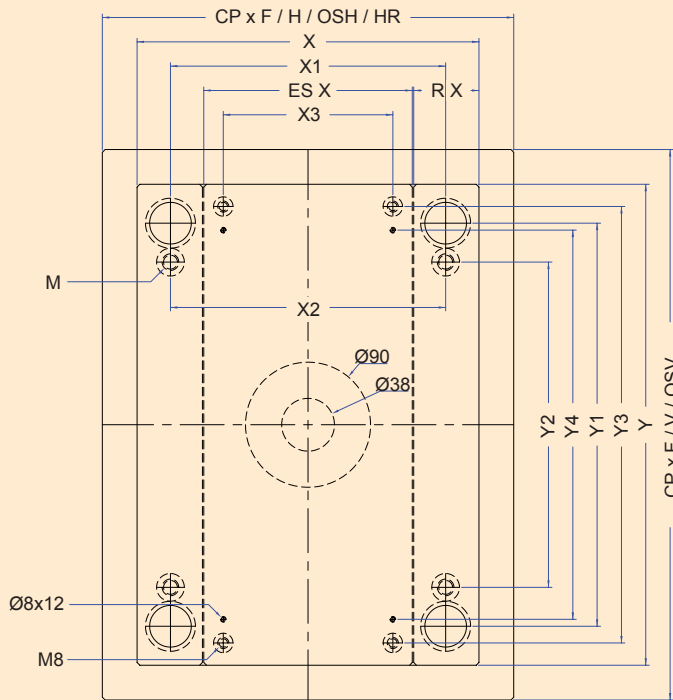
CODE	L
SGB 14 / 15 x 16	16
SGB 14 / 15 x 20	20
SGB 14 / 15 x 26	26
SGB 14 / 15 x 36	36
SGB 14 / 15 x 46	46
SGB 14 / 15 x 56	56
SGB 14 / 15 x 66	66
SGB 14 / 15 x 76	76

CODE	L
GB 14 / 15 x 16	16
GB 14 / 15 x 20	20
GB 14 / 15 x 26	26
GB 14 / 15 x 36	36
GB 14 / 15 x 46	46
GB 14 / 15 x 56	56
GB 14 / 15 x 66	66
GB 14 / 15 x 76	76



CODE	L
L 20 x 30	30
L 20 x 40	40
L 20 x 60	60
L 20 x 80	80
L 20 x 100	100

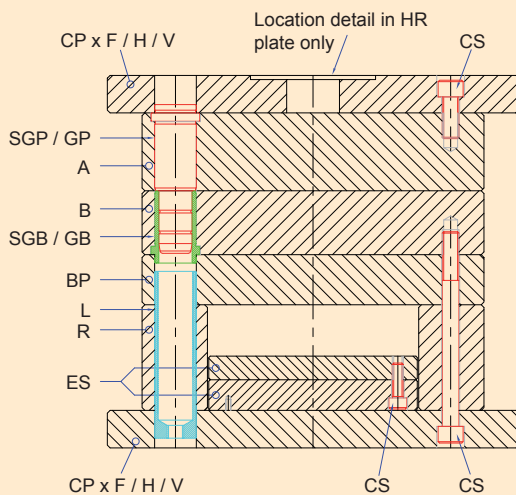
CODE	L
CS 10 x 20	20
CS 10 x 25	25
CS 10 x 30	30
CS 10 x 35	35
CS 10 x 40	40
CS 10 x 45	45
CS 10 x 50	50
CS 10 x 60	60
CS 10 x 70	70
CS 10 x 80	80
CS 10 x 90	90
CS 10 x 100	100
CS 10 x 110	110
CS 10 x 120	120
CS 10 x 130	130
CS 10 x 140	140
CS 10 x 150	150
CS 10 x 160	160
CS 10 x 200	200



M	10
MC	11
MHC	17.25
MHD	10.5

T=16	T1=16	
T=20	T1=11	T2=18
T≥26	T1=19	T2=26

PT1	20 H7
PG1	26
VG1	6

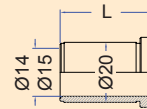
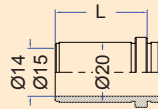
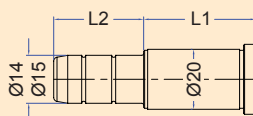
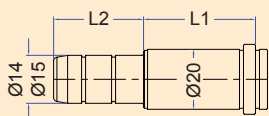


Download CAD data at
www.dms-diemould.co.uk
 enquiries to -
sales@dms-diemould.co.uk

Order Example
 Cavity Plate - Series - Thickness - Material
 A - 156 x 196 - 56 - 1730

●	Standard
◆	Available on request

156 x 196	X	X1	X2	X3	Y	Y1	Y2	Y3	Y4	Thickness (S)					
A	156	122	122		196	162	112			16 / 20 / 26 / 36 / 46 / 56 / 66 / 76	●	●	◆	◆	◆
B	156	122	122		196	162	112			16 / 20 / 26 / 36 / 46 / 56 / 66 / 76	●	●	◆	◆	◆
BP	156	122	122		196	162	112			26	●	◆		◆	
CPxF	156	122	122		196	162	112			20	●	◆		◆	
CPxH	196	122	122		196	162	112			20	●	◆		◆	
CPxHR	196	122	122		196	162	112			20	●	◆		◆	
CPxOSH	246	122	122		196	162	112			20	●	◆		◆	
CPxV	156	122	122		246	162	112			20	●	◆		◆	
CPxOSV	156	122	122		296	162	112			20	●	◆		◆	
ES	90			68	196			174	140	25 (9 + 16)	●			◆	
R	32	122	122		196	162	112			46 / 56 / 76	●			◆	

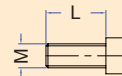
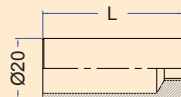


CODE	L1	L2
SGP 14 / 15 - 16 x 15	16	15
SGP 14 / 15 - 16 x 25		25
SGP 14 / 15 - 16 x 45		45
SGP 14 / 15 - 16 x 65		65
SGP 14 / 15 - 20 x 25	20	25
SGP 14 / 15 - 20 x 35		35
SGP 14 / 15 - 20 x 55		55
SGP 14 / 15 - 20 x 75		75
SGP 14 / 15 - 20 x 100		100
SGP 14 / 15 - 26 x 35	26	35
SGP 14 / 15 - 26 x 45		45
SGP 14 / 15 - 26 x 65		65
SGP 14 / 15 - 26 x 85		85
SGP 14 / 15 - 26 x 100		100
SGP 14 / 15 - 26 x 120		120
SGP 14 / 15 - 26 x 160		160
SGP 14 / 15 - 36 x 35		36
SGP 14 / 15 - 36 x 45	45	
SGP 14 / 15 - 36 x 65	65	
SGP 14 / 15 - 36 x 85	85	
SGP 14 / 15 - 36 x 100	100	
SGP 14 / 15 - 36 x 120	120	
SGP 14 / 15 - 36 x 160	160	
SGP 14 / 15 - 46 x 35	46	
SGP 14 / 15 - 46 x 45		45
SGP 14 / 15 - 46 x 65		65
SGP 14 / 15 - 46 x 85		85
SGP 14 / 15 - 46 x 100		100
SGP 14 / 15 - 46 x 120	120	
SGP 14 / 15 - 56 x 45	56	45
SGP 14 / 15 - 56 x 65		65
SGP 14 / 15 - 56 x 100		100
SGP 14 / 15 - 66 x 65	66	65
SGP 14 / 15 - 66 x 100		100
SGP 14 / 15 - 76 x 65	76	65
SGP 14 / 15 - 76 x 100		100

CODE	L1	L2
GP 14 / 15 - 16 x 15	16	15
GP 14 / 15 - 16 x 25		25
GP 14 / 15 - 16 x 45		45
GP 14 / 15 - 16 x 65		65
GP 14 / 15 - 20 x 25	20	25
GP 14 / 15 - 20 x 35		35
GP 14 / 15 - 20 x 55		55
GP 14 / 15 - 20 x 75		75
GP 14 / 15 - 20 x 100		100
GP 14 / 15 - 26 x 35	26	35
GP 14 / 15 - 26 x 45		45
GP 14 / 15 - 26 x 65		65
GP 14 / 15 - 26 x 85		85
GP 14 / 15 - 26 x 100		100
GP 14 / 15 - 26 x 120		120
GP 14 / 15 - 26 x 160		160
GP 14 / 15 - 36 x 35		36
GP 14 / 15 - 36 x 45	45	
GP 14 / 15 - 36 x 65	65	
GP 14 / 15 - 36 x 85	85	
GP 14 / 15 - 36 x 100	100	
GP 14 / 15 - 36 x 120	120	
GP 14 / 15 - 36 x 160	160	
GP 14 / 15 - 46 x 35	46	
GP 14 / 15 - 46 x 45		45
GP 14 / 15 - 46 x 65		65
GP 14 / 15 - 46 x 85		85
GP 14 / 15 - 46 x 100		100
GP 14 / 15 - 46 x 120	120	
GP 14 / 15 - 56 x 45	56	45
GP 14 / 15 - 56 x 65		65
GP 14 / 15 - 56 x 100		100
GP 14 / 15 - 66 x 65	66	65
GP 14 / 15 - 66 x 100		100
GP 14 / 15 - 76 x 65	76	65
GP 14 / 15 - 76 x 100		100

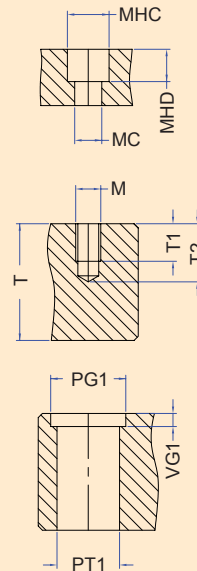
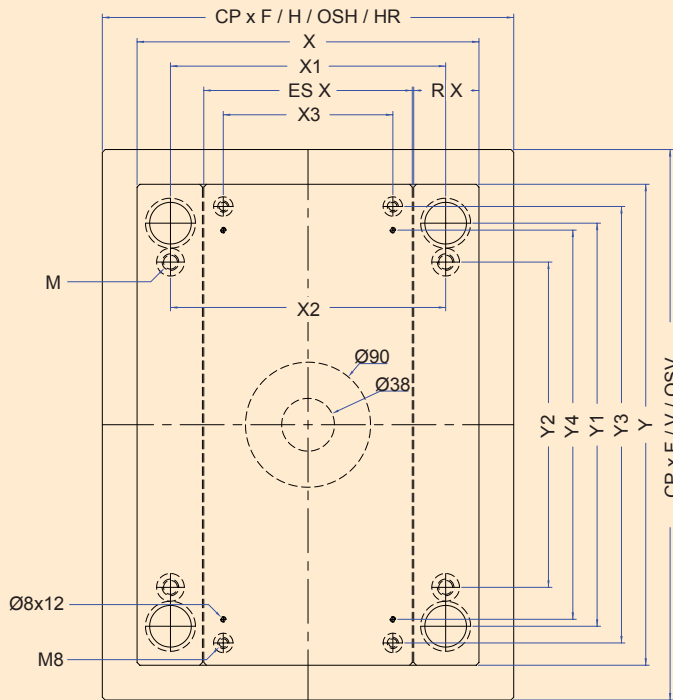
CODE	L
SGB 14 / 15 x 16	16
SGB 14 / 15 x 20	20
SGB 14 / 15 x 26	26
SGB 14 / 15 x 36	36
SGB 14 / 15 x 46	46
SGB 14 / 15 x 56	56
SGB 14 / 15 x 66	66
SGB 14 / 15 x 76	76

CODE	L
GB 14 / 15 x 16	16
GB 14 / 15 x 20	20
GB 14 / 15 x 26	26
GB 14 / 15 x 36	36
GB 14 / 15 x 46	46
GB 14 / 15 x 56	56
GB 14 / 15 x 66	66
GB 14 / 15 x 76	76



CODE	L
L 20 x 30	30
L 20 x 40	40
L 20 x 60	60
L 20 x 80	80
L 20 x 100	100

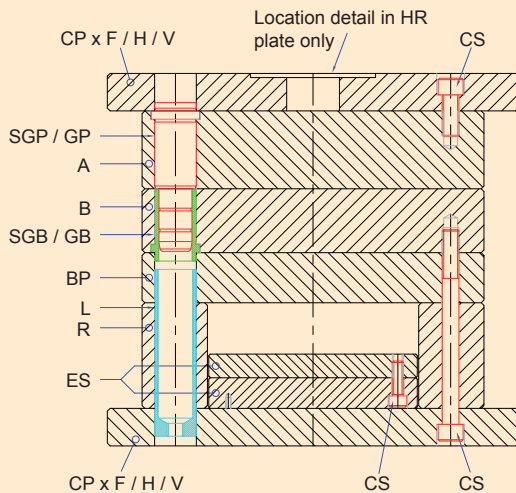
CODE	L
CS 10 x 20	20
CS 10 x 25	25
CS 10 x 30	30
CS 10 x 35	35
CS 10 x 40	40
CS 10 x 45	45
CS 10 x 50	50
CS 10 x 60	60
CS 10 x 70	70
CS 10 x 80	80
CS 10 x 90	90
CS 10 x 100	100
CS 10 x 110	110
CS 10 x 120	120
CS 10 x 130	130
CS 10 x 140	140
CS 10 x 150	150
CS 10 x 160	160
CS 10 x 200	200



M	10
MC	11
MHC	17.25
MHD	10.5

T=16	T1=16	
T=20	T1=11	T2=18
T=26	T1=16	T2=23
T>19	T1=19	T2=26

PT1	20 H7
PG1	26
VG1	6

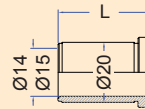
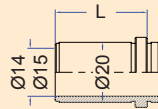
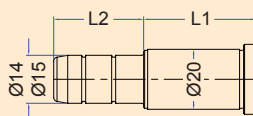
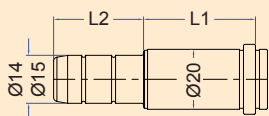


Download CAD data at www.dms-diemould.co.uk
enquiries to - sales@dms-diemould.co.uk

Order Example
Cavity Plate - Series - Thickness - Material
A - 156 x 246 - 56 - 1730

●	Standard
◆	Available on request

156 x 246	X	X1	X2	X3	Y	Y1	Y2	Y3	Y4	Thickness (S)					
A	156	122	122		246	212	162			16 / 20 / 26 / 36 / 46 / 56 / 66 / 76	●	●	◆	◆	◆
B	156	122	122		246	212	162			16 / 20 / 26 / 36 / 46 / 56 / 66 / 76	●	●	◆	◆	◆
BP	156	122	122		246	212	162			26	●	◆		◆	
CPxF	156	122	122		246	212	162			20	●	◆		◆	
CPxH	196	122	122		246	212	162			20	●	◆		◆	
CPxHR	196	122	122		246	212	162			20	●	◆		◆	
CPxOSH	246	122	122		246	212	162			20	●	◆		◆	
CPxV	156	122	122		296	212	162			20	●	◆		◆	
CPxOSV	156	122	122		346	212	162			20	●	◆		◆	
ES	90			68	246			224	190	25 (9 + 16)	●			◆	
R	32	122	122		246	212	162			46 / 56 / 76	●			◆	

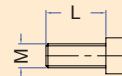
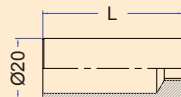


CODE	L1	L2
SGP 14 / 15 - 16 x 15	16	15
SGP 14 / 15 - 16 x 25		25
SGP 14 / 15 - 16 x 45		45
SGP 14 / 15 - 16 x 65		65
SGP 14 / 15 - 20 x 25	20	25
SGP 14 / 15 - 20 x 35		35
SGP 14 / 15 - 20 x 55		55
SGP 14 / 15 - 20 x 75		75
SGP 14 / 15 - 20 x 100		100
SGP 14 / 15 - 26 x 35	26	35
SGP 14 / 15 - 26 x 45		45
SGP 14 / 15 - 26 x 65		65
SGP 14 / 15 - 26 x 85		85
SGP 14 / 15 - 26 x 100		100
SGP 14 / 15 - 26 x 120		120
SGP 14 / 15 - 26 x 160		160
SGP 14 / 15 - 36 x 35	36	35
SGP 14 / 15 - 36 x 45		45
SGP 14 / 15 - 36 x 65		65
SGP 14 / 15 - 36 x 85		85
SGP 14 / 15 - 36 x 100		100
SGP 14 / 15 - 36 x 120		120
SGP 14 / 15 - 36 x 160		160
SGP 14 / 15 - 46 x 35	46	35
SGP 14 / 15 - 46 x 45		45
SGP 14 / 15 - 46 x 65		65
SGP 14 / 15 - 46 x 85		85
SGP 14 / 15 - 46 x 100		100
SGP 14 / 15 - 46 x 120		120
SGP 14 / 15 - 56 x 45	56	45
SGP 14 / 15 - 56 x 65		65
SGP 14 / 15 - 56 x 100		100
SGP 14 / 15 - 66 x 65	66	65
SGP 14 / 15 - 66 x 100		100
SGP 14 / 15 - 76 x 65	76	65
SGP 14 / 15 - 76 x 100		100

CODE	L1	L2
GP 14 / 15 - 16 x 15	16	15
GP 14 / 15 - 16 x 25		25
GP 14 / 15 - 16 x 45		45
GP 14 / 15 - 16 x 65		65
GP 14 / 15 - 20 x 25	20	25
GP 14 / 15 - 20 x 35		35
GP 14 / 15 - 20 x 55		55
GP 14 / 15 - 20 x 75		75
GP 14 / 15 - 20 x 100		100
GP 14 / 15 - 26 x 35	26	35
GP 14 / 15 - 26 x 45		45
GP 14 / 15 - 26 x 65		65
GP 14 / 15 - 26 x 85		85
GP 14 / 15 - 26 x 100		100
GP 14 / 15 - 26 x 120		120
GP 14 / 15 - 26 x 160		160
GP 14 / 15 - 36 x 35	36	35
GP 14 / 15 - 36 x 45		45
GP 14 / 15 - 36 x 65		65
GP 14 / 15 - 36 x 85		85
GP 14 / 15 - 36 x 100		100
GP 14 / 15 - 36 x 120		120
GP 14 / 15 - 36 x 160		160
GP 14 / 15 - 46 x 35	46	35
GP 14 / 15 - 46 x 45		45
GP 14 / 15 - 46 x 65		65
GP 14 / 15 - 46 x 85		85
GP 14 / 15 - 46 x 100		100
GP 14 / 15 - 46 x 120		120
GP 14 / 15 - 56 x 45	56	45
GP 14 / 15 - 56 x 65		65
GP 14 / 15 - 56 x 100		100
GP 14 / 15 - 66 x 65	66	65
GP 14 / 15 - 66 x 100		100
GP 14 / 15 - 76 x 65	76	65
GP 14 / 15 - 76 x 100		100

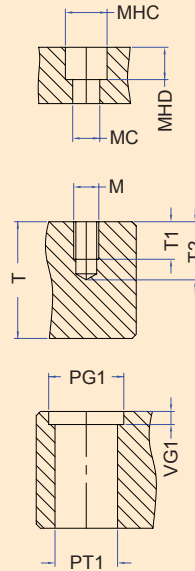
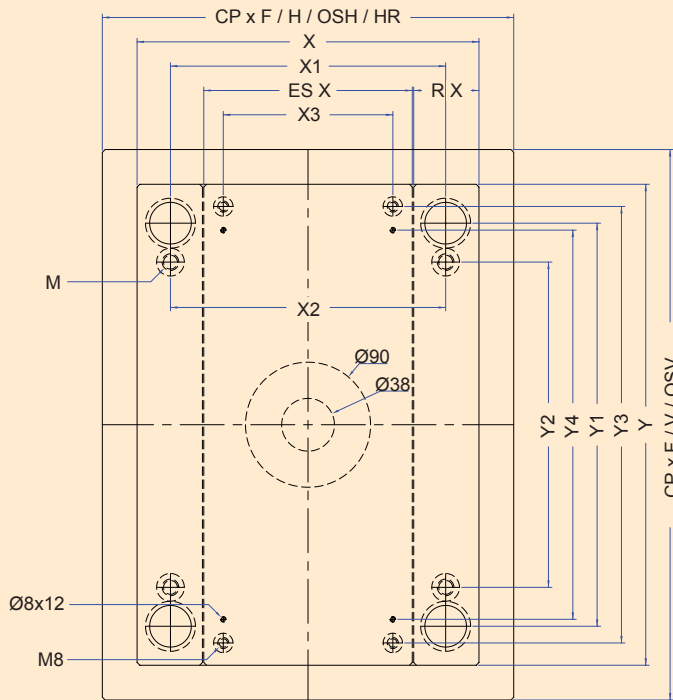
CODE	L
SGB 14 / 15 x 16	16
SGB 14 / 15 x 20	20
SGB 14 / 15 x 26	26
SGB 14 / 15 x 36	36
SGB 14 / 15 x 46	46
SGB 14 / 15 x 56	56
SGB 14 / 15 x 66	66
SGB 14 / 15 x 76	76

CODE	L
GB 14 / 15 x 16	16
GB 14 / 15 x 20	20
GB 14 / 15 x 26	26
GB 14 / 15 x 36	36
GB 14 / 15 x 46	46
GB 14 / 15 x 56	56
GB 14 / 15 x 66	66
GB 14 / 15 x 76	76



CODE	L
L 20 x 30	30
L 20 x 40	40
L 20 x 60	60
L 20 x 80	80
L 20 x 100	100

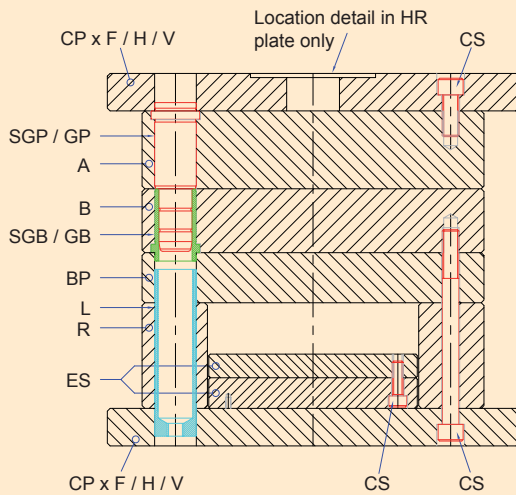
CODE	L
CS 10 x 20	20
CS 10 x 25	25
CS 10 x 30	30
CS 10 x 35	35
CS 10 x 40	40
CS 10 x 45	45
CS 10 x 50	50
CS 10 x 60	60
CS 10 x 70	70
CS 10 x 80	80
CS 10 x 90	90
CS 10 x 100	100
CS 10 x 110	110
CS 10 x 120	120
CS 10 x 130	130
CS 10 x 140	140
CS 10 x 150	150
CS 10 x 160	160
CS 10 x 200	200



M	10
MC	11
MHC	17.25
MHD	10.5

T=16	T1=16	
T=20	T1=11	T2=18
T=26	T1=16	T2=23
T>26	T1=19	T2=26

PT1	20 H7
PG1	26
VG1	6

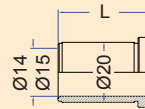
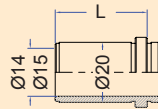
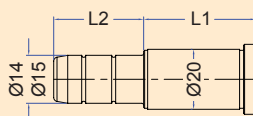
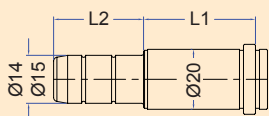


Download CAD data at
www.dms-diemould.co.uk
 enquiries to -
sales@dms-diemould.co.uk

Order Example
 Cavity Plate - Series - Thickness - Material
 A - 156 x 296 - 56 - 1730

●	Standard
◆	Available on request

156 x 296	X	X1	X2	X3	Y	Y1	Y2	Y3	Y4	Thickness (S)	1730	2311	2312	2085	2767
A	156	122	122		296	262	212			20 / 26 / 36 / 46 / 56 / 66 / 76	●	●	◆	◆	◆
B	156	122	122		296	262	212			20 / 26 / 36 / 46 / 56 / 66 / 76	●	●	◆	◆	◆
BP	156	122	122		296	262	212			26	●	◆		◆	
CPxF	156	122	122		296	262	212			20	●	◆		◆	
CPxH	196	122	122		296	262	212			20	●	◆		◆	
CPxHR	196	122	122		296	262	212			20	●	◆		◆	
CPxOSH	246	122	122		296	262	212			20	●	◆		◆	
CPxV	156	122	122		346	262	212			20	●	◆		◆	
CPxOSV	156	122	122		396	262	212			20	●	◆		◆	
ES	90			68	296			274	240	25 (9 + 16)	●			◆	
R	32	122	122		296	262	212			46 / 56 / 76	●			◆	

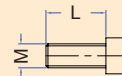
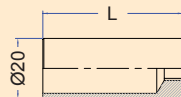


CODE	L1	L2
SGP 14 / 15 - 16 x 15	16	15
SGP 14 / 15 - 16 x 25		25
SGP 14 / 15 - 16 x 45		45
SGP 14 / 15 - 16 x 65		65
SGP 14 / 15 - 20 x 25	20	25
SGP 14 / 15 - 20 x 35		35
SGP 14 / 15 - 20 x 55		55
SGP 14 / 15 - 20 x 75		75
SGP 14 / 15 - 20 x 100		100
SGP 14 / 15 - 26 x 35	26	35
SGP 14 / 15 - 26 x 45		45
SGP 14 / 15 - 26 x 65		65
SGP 14 / 15 - 26 x 85		85
SGP 14 / 15 - 26 x 100		100
SGP 14 / 15 - 26 x 120		120
SGP 14 / 15 - 26 x 160		160
SGP 14 / 15 - 36 x 35	36	35
SGP 14 / 15 - 36 x 45		45
SGP 14 / 15 - 36 x 65		65
SGP 14 / 15 - 36 x 85		85
SGP 14 / 15 - 36 x 100		100
SGP 14 / 15 - 36 x 120		120
SGP 14 / 15 - 36 x 160		160
SGP 14 / 15 - 46 x 35	46	35
SGP 14 / 15 - 46 x 45		45
SGP 14 / 15 - 46 x 65		65
SGP 14 / 15 - 46 x 85		85
SGP 14 / 15 - 46 x 100		100
SGP 14 / 15 - 46 x 120		120
SGP 14 / 15 - 56 x 45	56	45
SGP 14 / 15 - 56 x 65		65
SGP 14 / 15 - 56 x 100		100
SGP 14 / 15 - 66 x 65	66	65
SGP 14 / 15 - 66 x 100		100
SGP 14 / 15 - 76 x 65	76	65
SGP 14 / 15 - 76 x 100		100

CODE	L1	L2
SGP 14 / 15 - 16 x 15	16	15
SGP 14 / 15 - 16 x 25		25
SGP 14 / 15 - 16 x 45		45
SGP 14 / 15 - 16 x 65		65
SGP 14 / 15 - 20 x 25	20	25
SGP 14 / 15 - 20 x 35		35
SGP 14 / 15 - 20 x 55		55
SGP 14 / 15 - 20 x 75		75
SGP 14 / 15 - 20 x 100		100
SGP 14 / 15 - 26 x 35	26	35
SGP 14 / 15 - 26 x 45		45
SGP 14 / 15 - 26 x 65		65
SGP 14 / 15 - 26 x 85		85
SGP 14 / 15 - 26 x 100		100
SGP 14 / 15 - 26 x 120		120
SGP 14 / 15 - 26 x 160		160
SGP 14 / 15 - 36 x 35	36	35
SGP 14 / 15 - 36 x 45		45
SGP 14 / 15 - 36 x 65		65
SGP 14 / 15 - 36 x 85		85
SGP 14 / 15 - 36 x 100		100
SGP 14 / 15 - 36 x 120		120
SGP 14 / 15 - 36 x 160		160
SGP 14 / 15 - 46 x 35	46	35
SGP 14 / 15 - 46 x 45		45
SGP 14 / 15 - 46 x 65		65
SGP 14 / 15 - 46 x 85		85
SGP 14 / 15 - 46 x 100		100
SGP 14 / 15 - 46 x 120		120
SGP 14 / 15 - 56 x 45	56	45
SGP 14 / 15 - 56 x 65		65
SGP 14 / 15 - 56 x 100		100
SGP 14 / 15 - 66 x 65	66	65
SGP 14 / 15 - 66 x 100		100
SGP 14 / 15 - 76 x 65	76	65
SGP 14 / 15 - 76 x 100		100

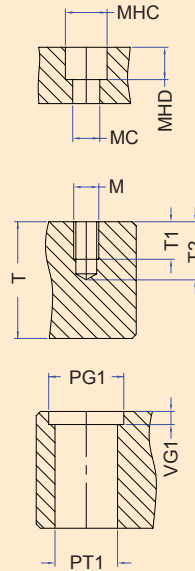
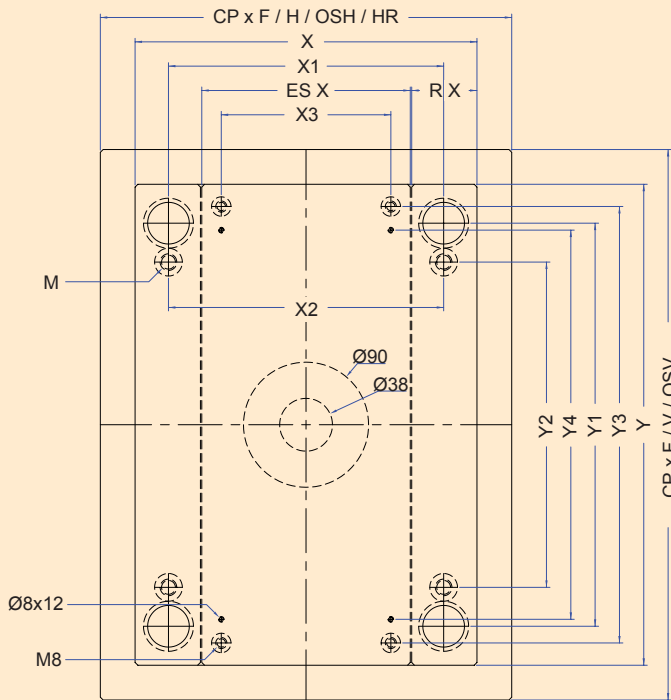
CODE	L
SGB 14 / 15 x 16	16
SGB 14 / 15 x 20	20
SGB 14 / 15 x 26	26
SGB 14 / 15 x 36	36
SGB 14 / 15 x 46	46
SGB 14 / 15 x 56	56
SGB 14 / 15 x 66	66
SGB 14 / 15 x 76	76

CODE	L
GB 14 / 15 x 16	16
GB 14 / 15 x 20	20
GB 14 / 15 x 26	26
GB 14 / 15 x 36	36
GB 14 / 15 x 46	46
GB 14 / 15 x 56	56
GB 14 / 15 x 66	66
GB 14 / 15 x 76	76



CODE	L
L 20 x 30	30
L 20 x 40	40
L 20 x 60	60
L 20 x 80	80
L 20 x 100	100

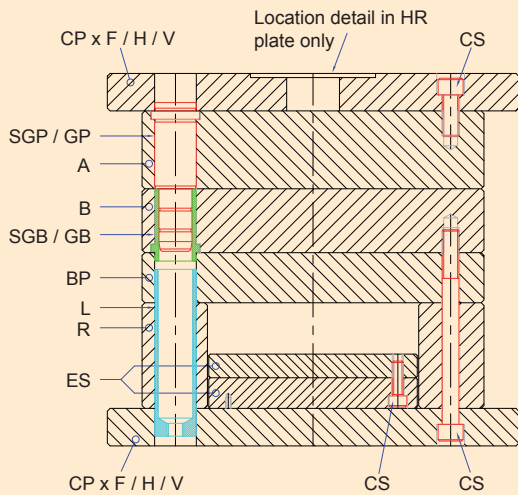
CODE	L
CS 10 x 20	20
CS 10 x 25	25
CS 10 x 30	30
CS 10 x 35	35
CS 10 x 40	40
CS 10 x 45	45
CS 10 x 50	50
CS 10 x 60	60
CS 10 x 70	70
CS 10 x 80	80
CS 10 x 90	90
CS 10 x 100	100
CS 10 x 110	110
CS 10 x 120	120
CS 10 x 130	130
CS 10 x 140	140
CS 10 x 150	150
CS 10 x 160	160
CS 10 x 200	200



M	10
MC	11
MHC	17.25
MHD	10.5

T=16	T1=16	
T=20	T1=11	T2=18
T=26	T1=16	T2=23
T>26	T1=19	T2=26

PT1	26 H7
PG1	32
VG1	6

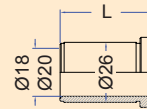
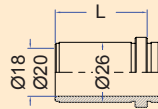
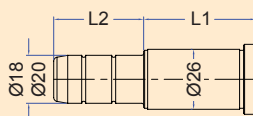
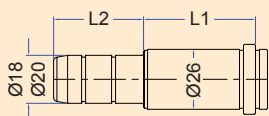


Download CAD data at
www.dms-diemould.co.uk
 enquiries to -
sales@dms-diemould.co.uk

Order Example
 Cavity Plate - Series - Thickness - Material
 A - 196 x 196 - 56 - 1730

●	Standard
◆	Available on request

196 x 196	X	X1	X2	X3	Y	Y1	Y2	Y3	Y4	Thickness (S)	1730	2311	2312	2085	2767
A	196	154	154		196	152	100			16 / 20 / 26 / 36 / 46 / 56 / 66 / 76 / 96	●	●	◆	◆	◆
B	196	154	154		196	152	100			16 / 20 / 26 / 36 / 46 / 56 / 66 / 76 / 96	●	●	◆	◆	◆
BP	196	154	154		196	152	100			36	●	◆		◆	
CPxF	196	154	154		196	152	100			26	●	◆		◆	
CPxH	246	154	154		196	152	100			26	●	◆		◆	
CPxHR	246	154	154		196	152	100			26	●	◆		◆	
CPxOSH	296	154	154		196	152	100			26	●	◆		◆	
CPxV	196	154	154		246	152	100			26	●	◆		◆	
CPxOSV	196	154	154		296	152	100			26	●	◆		◆	
ES	118			96	196			174	140	28 (12 + 16)	●			◆	
R	38	154	154		196	152	100			46 / 56 / 76	●			◆	

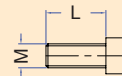
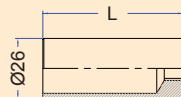


CODE	L1	L2
SGP 18 / 20 - 16 x 25	16	25
SGP 18 / 20 - 16 x 35		35
SGP 18 / 20 - 16 x 55		55
SGP 18 / 20 - 20 x 25	20	25
SGP 18 / 20 - 20 x 35		35
SGP 18 / 20 - 20 x 55		55
SGP 18 / 20 - 20 x 75		75
SGP 18 / 20 - 20 x 100		100
SGP 18 / 20 - 26 x 35	26	35
SGP 18 / 20 - 26 x 45		45
SGP 18 / 20 - 26 x 65		65
SGP 18 / 20 - 26 x 85		85
SGP 18 / 20 - 26 x 100		100
SGP 18 / 20 - 26 x 120		120
SGP 18 / 20 - 26 x 160		160
SGP 18 / 20 - 26 x 200		200
SGP 18 / 20 - 36 x 35	36	35
SGP 18 / 20 - 36 x 45		45
SGP 18 / 20 - 36 x 65		65
SGP 18 / 20 - 36 x 85		85
SGP 18 / 20 - 36 x 100		100
SGP 18 / 20 - 36 x 120		120
SGP 18 / 20 - 36 x 160		160
SGP 18 / 20 - 36 x 200		200
SGP 18 / 20 - 36 x 240		240
SGP 18 / 20 - 46 x 45	46	45
SGP 18 / 20 - 46 x 65		65
SGP 18 / 20 - 46 x 85		85
SGP 18 / 20 - 46 x 100		100
SGP 18 / 20 - 46 x 120		120
SGP 18 / 20 - 46 x 160		160
SGP 18 / 20 - 56 x 45	56	45
SGP 18 / 20 - 56 x 65		65
SGP 18 / 20 - 56 x 100		100
SGP 18 / 20 - 56 x 160		160
SGP 18 / 20 - 66 x 65	66	65
SGP 18 / 20 - 66 x 100		100
SGP 18 / 20 - 66 x 160		160
SGP 18 / 20 - 76 x 65	76	65
SGP 18 / 20 - 76 x 100		100
SGP 18 / 20 - 76 x 160		160
SGP 18 / 20 - 96 x 65	96	65
SGP 18 / 20 - 96 x 100		100
SGP 18 / 20 - 96 x 160		160

CODE	L1	L2
GP 18 / 20 - 16 x 25	16	25
GP 18 / 20 - 16 x 35		35
GP 18 / 20 - 16 x 55		55
GP 18 / 20 - 20 x 25	20	25
GP 18 / 20 - 20 x 35		35
GP 18 / 20 - 20 x 55		55
GP 18 / 20 - 20 x 75		75
GP 18 / 20 - 20 x 100		100
GP 18 / 20 - 26 x 35	26	5
GP 18 / 20 - 26 x 45		45
GP 18 / 20 - 26 x 65		65
GP 18 / 20 - 26 x 85		85
GP 18 / 20 - 26 x 100		100
GP 18 / 20 - 26 x 120		120
GP 18 / 20 - 26 x 160		160
GP 18 / 20 - 26 x 200		200
GP 18 / 20 - 36 x 35	36	35
GP 18 / 20 - 36 x 45		45
GP 18 / 20 - 36 x 5		65
GP 18 / 20 - 36 x 85		85
GP 18 / 20 - 36 x 100		100
GP 18 / 20 - 36 x 120		120
GP 18 / 20 - 36 x 160		160
GP 18 / 20 - 36 x 200		200
GP 18 / 20 - 36 x 240		240
GP 18 / 20 - 46 x 45	46	45
GP 18 / 20 - 46 x 65		65
GP 18 / 20 - 46 x 85		85
GP 18 / 20 - 46 x 100		100
GP 18 / 20 - 46 x 120		120
GP 18 / 20 - 46 x 160		160
GP 18 / 20 - 56 x 45	56	45
GP 18 / 20 - 56 x 65		65
GP 18 / 20 - 56 x 100		100
GP 18 / 20 - 56 x 160		160
GP 18 / 20 - 66 x 65	66	65
GP 18 / 20 - 66 x 100		100
GP 18 / 20 - 66 x 160		160
GP 18 / 20 - 76 x 65	76	65
GP 18 / 20 - 76 x 100		100
GP 18 / 20 - 76 x 160		160
GP 18 / 20 - 96 x 65	96	65
GP 18 / 20 - 96 x 100		100
GP 18 / 20 - 96 x 160		160

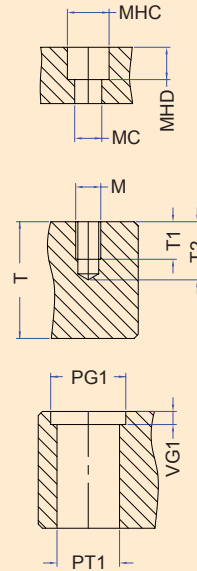
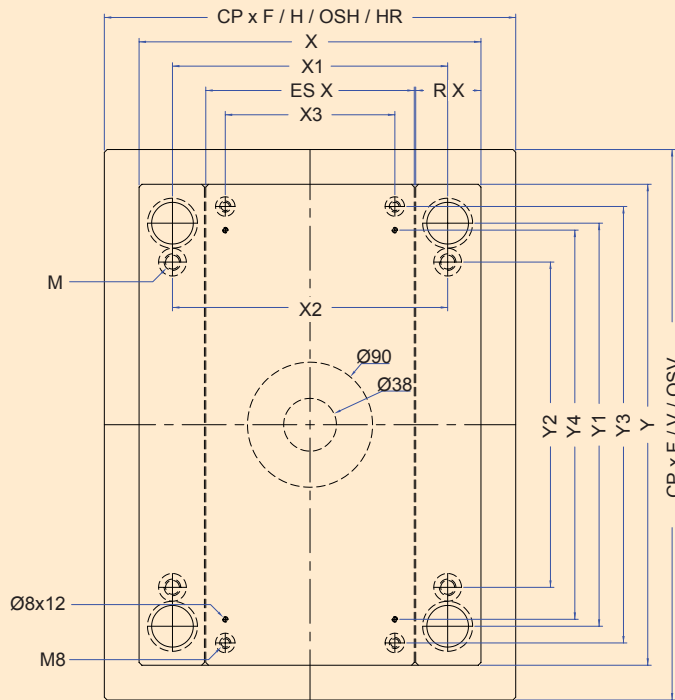
CODE	L
SGB 18 / 20 x 16	16
SGB 18 / 20 x 20	20
SGB 18 / 20 x 26	26
SGB 18 / 20 x 36	36
SGB 18 / 20 x 46	46
SGB 18 / 20 x 56	56
SGB 18 / 20 x 66	66
SGB 18 / 20 x 76	76
SGB 18 / 20 x 96	96

CODE	L
GB 18 / 20 x 16	16
GB 18 / 20 x 20	20
GB 18 / 20 x 26	26
GB 18 / 20 x 36	36
GB 18 / 20 x 46	46
GB 18 / 20 x 56	56
GB 18 / 20 x 66	66
GB 18 / 20 x 76	76
GB 18 / 20 x 96	96



CODE	L
L 26 x 40	40
L 26 x 60	60
L 26 x 80	80
L 26 x 100	100
L 26 x 120	120

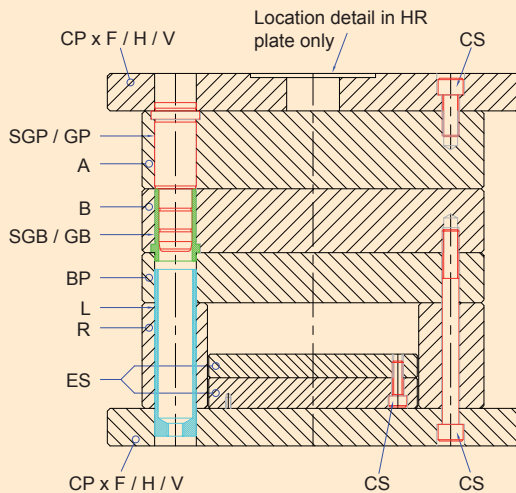
CODE	L
CS 10 x 20	20
CS 10 x 25	25
CS 10 x 30	30
CS 10 x 35	35
CS 10 x 40	40
CS 10 x 45	45
CS 10 x 50	50
CS 10 x 60	60
CS 10 x 70	70
CS 10 x 80	80
CS 10 x 90	90
CS 10 x 100	100
CS 10 x 110	110
CS 10 x 120	120
CS 10 x 130	130
CS 10 x 140	140
CS 10 x 150	150
CS 10 x 160	160
CS 10 x 200	200



M	10
MC	11
MHC	17.25
MHD	10.5

T=16	T1=16	
T=20	T1=11	T2=18
T=26	T1=16	T2=23
T>26	T1=19	T2=26

PT1	26 H7
PG1	32
VG1	6

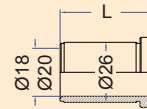
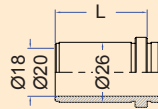
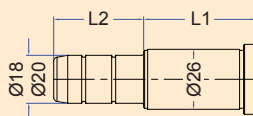
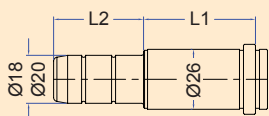


Download CAD data at www.dms-diemould.co.uk
 enquiries to - sales@dms-diemould.co.uk

Order Example
 Cavity Plate - Series - Thickness - Material
 A - 196 x 246 - 56 - 1730

●	Standard
◆	Available on request

196 x 246	X	X1	X2	X3	Y	Y1	Y2	Y3	Y4	Thickness (S)	1730	2311	2312	2085	2767
A	196	154	154		246	202	150			16 / 20 / 26 / 36 / 46 / 56 / 66 / 76 / 96	●	●	◆	◆	◆
B	196	154	154		246	202	150			16 / 20 / 26 / 36 / 46 / 56 / 66 / 76 / 96	●	●	◆	◆	◆
BP	196	154	154		246	202	150			36	●	◆		◆	
CPxF	196	154	154		246	202	150			26	●	◆		◆	
CPxH	246	154	154		246	202	150			26	●	◆		◆	
CPxHR	246	154	154		246	202	150			26	●	◆		◆	
CPxOSH	296	154	154		246	202	150			26	●	◆		◆	
CPxV	196	154	154		296	202	150			26	●	◆		◆	
CPxOSV	196	154	154		346	202	150			26	●	◆		◆	
ES	118			96	246			224	190	28 (12 + 16)	●			◆	
R	38	154	154		246	202	150			46 / 56 / 76	●			◆	

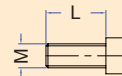
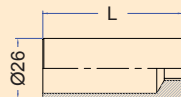


CODE	L1	L2
SGP 18 / 20 - 16 x 25	16	25
SGP 18 / 20 - 16 x 35		35
SGP 18 / 20 - 16 x 55		55
SGP 18 / 20 - 20 x 25	20	25
SGP 18 / 20 - 20 x 35		35
SGP 18 / 20 - 20 x 55		55
SGP 18 / 20 - 20 x 75		75
SGP 18 / 20 - 20 x 100		100
SGP 18 / 20 - 26 x 35	26	35
SGP 18 / 20 - 26 x 45		45
SGP 18 / 20 - 26 x 65		65
SGP 18 / 20 - 26 x 85		85
SGP 18 / 20 - 26 x 100		100
SGP 18 / 20 - 26 x 120		120
SGP 18 / 20 - 26 x 160		160
SGP 18 / 20 - 26 x 200		200
SGP 18 / 20 - 36 x 35	36	35
SGP 18 / 20 - 36 x 45		45
SGP 18 / 20 - 36 x 65		65
SGP 18 / 20 - 36 x 85		85
SGP 18 / 20 - 36 x 100		100
SGP 18 / 20 - 36 x 120		120
SGP 18 / 20 - 36 x 160		160
SGP 18 / 20 - 36 x 200		200
SGP 18 / 20 - 36 x 240		240
SGP 18 / 20 - 46 x 45	46	45
SGP 18 / 20 - 46 x 65		65
SGP 18 / 20 - 46 x 85		85
SGP 18 / 20 - 46 x 100		100
SGP 18 / 20 - 46 x 120		120
SGP 18 / 20 - 46 x 160		160
SGP 18 / 20 - 56 x 45	56	45
SGP 18 / 20 - 56 x 65		65
SGP 18 / 20 - 56 x 100		100
SGP 18 / 20 - 56 x 160		160
SGP 18 / 20 - 66 x 65	66	65
SGP 18 / 20 - 66 x 100		100
SGP 18 / 20 - 66 x 160		160
SGP 18 / 20 - 76 x 65	76	65
SGP 18 / 20 - 76 x 100		100
SGP 18 / 20 - 76 x 160		160
SGP 18 / 20 - 96 x 65	96	65
SGP 18 / 20 - 96 x 100		100
SGP 18 / 20 - 96 x 160		160

CODE	L1	L2
GP 18 / 20 - 16 x 25	16	25
GP 18 / 20 - 16 x 35		35
GP 18 / 20 - 16 x 55		55
GP 18 / 20 - 20 x 25	20	25
GP 18 / 20 - 20 x 35		35
GP 18 / 20 - 20 x 55		55
GP 18 / 20 - 20 x 75		75
GP 18 / 20 - 20 x 100		100
GP 18 / 20 - 26 x 35	26	35
GP 18 / 20 - 26 x 45		45
GP 18 / 20 - 26 x 65		65
GP 18 / 20 - 26 x 85		85
GP 18 / 20 - 26 x 100		100
GP 18 / 20 - 26 x 120		120
GP 18 / 20 - 26 x 160		160
GP 18 / 20 - 26 x 200		200
GP 18 / 20 - 36 x 35	36	35
GP 18 / 20 - 36 x 45		45
GP 18 / 20 - 36 x 65		65
GP 18 / 20 - 36 x 85		85
GP 18 / 20 - 36 x 100		100
GP 18 / 20 - 36 x 120		120
GP 18 / 20 - 36 x 160		160
GP 18 / 20 - 36 x 200		200
GP 18 / 20 - 46 x 45	46	45
GP 18 / 20 - 46 x 65		65
GP 18 / 20 - 46 x 85		85
GP 18 / 20 - 46 x 100		100
GP 18 / 20 - 46 x 120		120
GP 18 / 20 - 46 x 160		160
GP 18 / 20 - 56 x 45	56	45
GP 18 / 20 - 56 x 65		65
GP 18 / 20 - 56 x 100		100
GP 18 / 20 - 56 x 160		160
GP 18 / 20 - 66 x 65	66	65
GP 18 / 20 - 66 x 100		100
GP 18 / 20 - 66 x 160		160
GP 18 / 20 - 76 x 65	76	65
GP 18 / 20 - 76 x 100		100
GP 18 / 20 - 76 x 160		160
GP 18 / 20 - 96 x 65	96	65
GP 18 / 20 - 96 x 100		100
GP 18 / 20 - 96 x 160		160

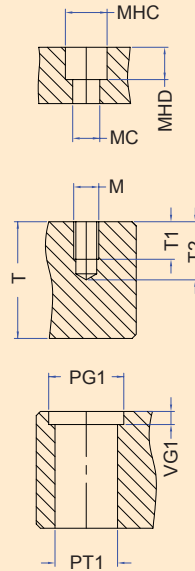
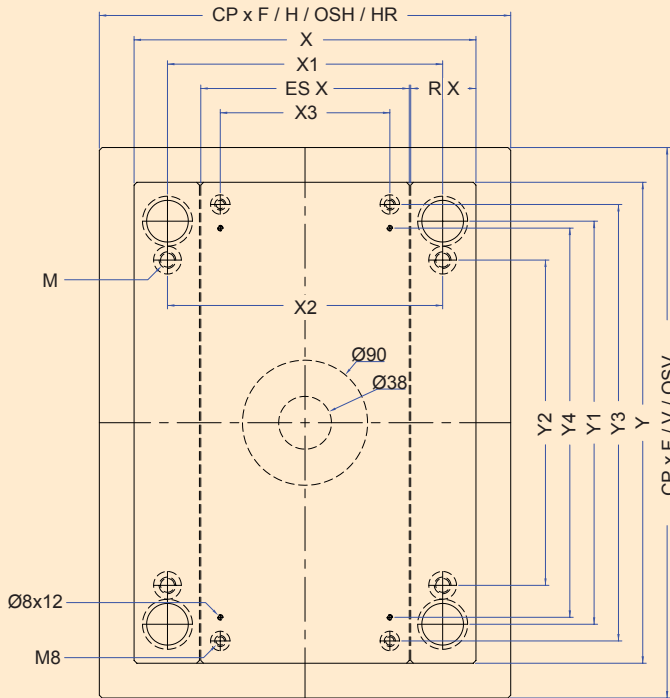
CODE	L
SGB 18 / 20 x 16	16
SGB 18 / 20 x 20	20
SGB 18 / 20 x 26	26
SGB 18 / 20 x 36	36
SGB 18 / 20 x 46	46
SGB 18 / 20 x 56	56
SGB 18 / 20 x 66	66
SGB 18 / 20 x 76	76
SGB 18 / 20 x 96	96

CODE	L
GB 18 / 20 x 16	16
GB 18 / 20 x 20	20
GB 18 / 20 x 26	26
GB 18 / 20 x 36	36
GB 18 / 20 x 46	46
GB 18 / 20 x 56	56
GB 18 / 20 x 66	66
GB 18 / 20 x 76	76
GB 18 / 20 x 96	96



CODE	L
L 26 x 40	40
L 26 x 60	60
L 26 x 80	80
L 26 x 100	100
L 26 x 120	120

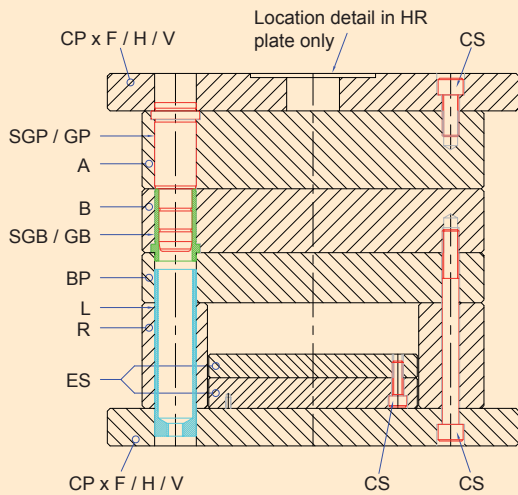
CODE	L
CS 10 x 20	20
CS 10 x 25	25
CS 10 x 30	30
CS 10 x 35	35
CS 10 x 40	40
CS 10 x 45	45
CS 10 x 50	50
CS 10 x 60	60
CS 10 x 70	70
CS 10 x 80	80
CS 10 x 90	90
CS 10 x 100	100
CS 10 x 110	110
CS 10 x 120	120
CS 10 x 130	130
CS 10 x 140	140
CS 10 x 150	150
CS 10 x 160	160
CS 10 x 200	200



M	12
MC	13
MHC	19.25
MHD	12.5

T=16	T1=16	
T=20	T1=20	
T=26	T1=15	T2=23
T≥36	T1=22	T2=30

PT1	30 H7
PG1	36
VG1	6

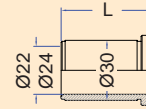
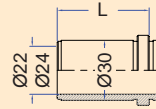
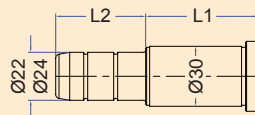
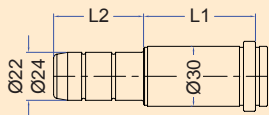


Download CAD data at
www.dms-diemould.co.uk
 enquiries to -
sales@dms-diemould.co.uk

Order Example
 Cavity Plate - Series - Thickness - Material
 A - 156 x 296 - 56 - 1730

●	Standard
◆	Available on request

196 x 296	X	X1	X2	X3	Y	Y1	Y2	Y3	Y4	Thickness (S)	1730	2311	2312	2085	2767
A	196	150	150		296	244	184			16 / 20 / 26 / 36 / 46 / 56 / 66 / 76 / 96	●	●	◆	◆	◆
B	196	150	150		296	244	184			16 / 20 / 26 / 36 / 46 / 56 / 66 / 76 / 96	●	●	◆	◆	◆
BP	196	150	150		296	244	184			36	●	◆		◆	
CPxF	196	150	150		296	244	184			26	●	◆		◆	
CPxH	246	150	150		296	244	184			26	●	◆		◆	
CPxHR	246	150	150		296	244	184			26	●	◆		◆	
CPxOSH	296	150	150		296	244	184			26	●	◆		◆	
CPxV	196	150	150		346	244	184			26	●	◆		◆	
CPxOSV	196	150	150		396	244	184			26	●	◆		◆	
ES	108			86	296			274	240	28 (12 + 16)	●			◆	
R	43	150	150		296	244	184			56 / 76 / 96	●			◆	

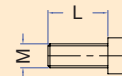
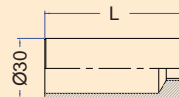


CODE	L1	L2
SGP 22 / 24 - 16 x 25	16	25
SGP 22 / 24 - 16 x 45		45
SGP 22 / 24 - 16 x 65		65
SGP 22 / 24 - 20 x 25	20	25
SGP 22 / 24 - 20 x 45		45
SGP 22 / 24 - 20 x 65		65
SGP 22 / 24 - 20 x 85		85
SGP 22 / 24 - 20 x 100		100
SGP 22 / 24 - 26 x 35	26	35
SGP 22 / 24 - 26 x 45		45
SGP 22 / 24 - 26 x 65		65
SGP 22 / 24 - 26 x 85		85
SGP 22 / 24 - 26 x 100		100
SGP 22 / 24 - 26 x 120		120
SGP 22 / 24 - 26 x 160		160
SGP 22 / 24 - 26 x 200		200
SGP 22 / 24 - 36 x 45	36	45
SGP 22 / 24 - 36 x 65		65
SGP 22 / 24 - 36 x 85		85
SGP 22 / 24 - 36 x 100		100
SGP 22 / 24 - 36 x 120		120
SGP 22 / 24 - 36 x 160		160
SGP 22 / 24 - 36 x 200		200
SGP 22 / 24 - 36 x 240		240
SGP 22 / 24 - 46 x 45	46	45
SGP 22 / 24 - 46 x 65		65
SGP 22 / 24 - 46 x 85		85
SGP 22 / 24 - 46 x 100		100
SGP 22 / 24 - 46 x 120		120
SGP 22 / 24 - 46 x 160		160
SGP 22 / 24 - 56 x 45	56	45
SGP 22 / 24 - 56 x 65		65
SGP 22 / 24 - 56 x 100		100
SGP 22 / 24 - 56 x 120		120
SGP 22 / 24 - 56 x 160		160
SGP 22 / 24 - 66 x 65	66	65
SGP 22 / 24 - 66 x 100		100
SGP 22 / 24 - 66 x 160		160
SGP 22 / 24 - 76 x 65	76	65
SGP 22 / 24 - 76 x 100		100
SGP 22 / 24 - 76 x 120		120
SGP 22 / 24 - 76 x 160		160
SGP 22 / 24 - 96 x 65	96	65
SGP 22 / 24 - 96 x 100		100
SGP 22 / 24 - 96 x 160		160
SGP 22 / 24 - 116 x 65	116	65
SGP 22 / 24 - 116 x 100		100
SGP 22 / 24 - 116 x 160		160

CODE	L1	L2
GP 22 / 24 - 16 x 25	16	25
GP 22 / 24 - 16 x 45		45
GP 22 / 24 - 16 x 65		65
GP 22 / 24 - 20 x 25	20	25
GP 22 / 24 - 20 x 45		45
GP 22 / 24 - 20 x 65		65
GP 22 / 24 - 20 x 85		85
GP 22 / 24 - 20 x 100		100
GP 22 / 24 - 26 x 35	26	35
GP 22 / 24 - 26 x 45		45
GP 22 / 24 - 26 x 65		65
GP 22 / 24 - 26 x 85		85
GP 22 / 24 - 26 x 100		100
GP 22 / 24 - 26 x 120		120
GP 22 / 24 - 26 x 160		160
GP 22 / 24 - 26 x 200		200
GP 22 / 24 - 36 x 45	36	45
GP 22 / 24 - 36 x 65		65
GP 22 / 24 - 36 x 85		85
GP 22 / 24 - 36 x 100		100
GP 22 / 24 - 36 x 120		120
GP 22 / 24 - 36 x 160		160
GP 22 / 24 - 36 x 200		200
GP 22 / 24 - 36 x 240		240
GP 22 / 24 - 46 x 45	46	45
GP 22 / 24 - 46 x 65		65
GP 22 / 24 - 46 x 85		85
GP 22 / 24 - 46 x 100		100
GP 22 / 24 - 46 x 120		120
GP 22 / 24 - 46 x 160		160
GP 22 / 24 - 56 x 45	56	45
GP 22 / 24 - 56 x 65		65
GP 22 / 24 - 56 x 100		100
GP 22 / 24 - 56 x 120		120
GP 22 / 24 - 56 x 160		160
GP 22 / 24 - 66 x 65	66	65
GP 22 / 24 - 66 x 100		100
GP 22 / 24 - 66 x 160		160
GP 22 / 24 - 76 x 65	76	65
GP 22 / 24 - 76 x 100		100
GP 22 / 24 - 76 x 120		120
GP 22 / 24 - 76 x 160		160
GP 22 / 24 - 96 x 65	96	65
GP 22 / 24 - 96 x 100		100
GP 22 / 24 - 96 x 160		160
GP 22 / 24 - 116 x 65	116	65
GP 22 / 24 - 116 x 100		100
GP 22 / 24 - 116 x 160		160

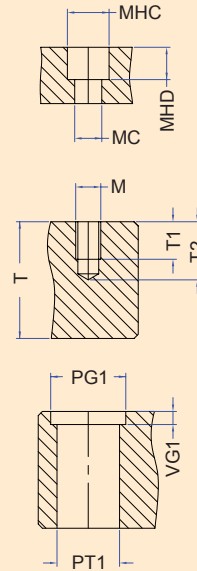
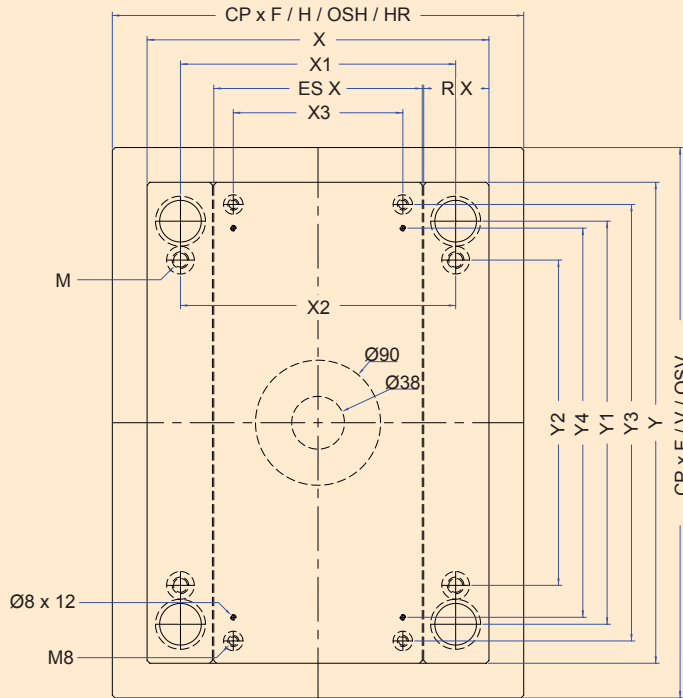
CODE	L
SGB 22 / 24 x 16	16
SGB 22 / 24 x 20	20
SGB 22 / 24 x 26	26
SGB 22 / 24 x 36	36
SGB 22 / 24 x 46	46
SGB 22 / 24 x 56	56
SGB 22 / 24 x 66	66
SGB 22 / 24 x 76	76
SGB 22 / 24 x 96	96
SGB 22 / 24 x 116	116

CODE	L
GB 22 / 24 x 16	16
GB 22 / 24 x 20	20
GB 22 / 24 x 26	26
GB 22 / 24 x 36	36
GB 22 / 24 x 46	46
GB 22 / 24 x 56	56
GB 22 / 24 x 66	66
GB 22 / 24 x 76	76
GB 22 / 24 x 96	96
GB 22 / 24 x 116	116



CODE	L
L 30 x 60	60
L 30 x 80	80
L 30 x 100	100
L 30 x 120	120

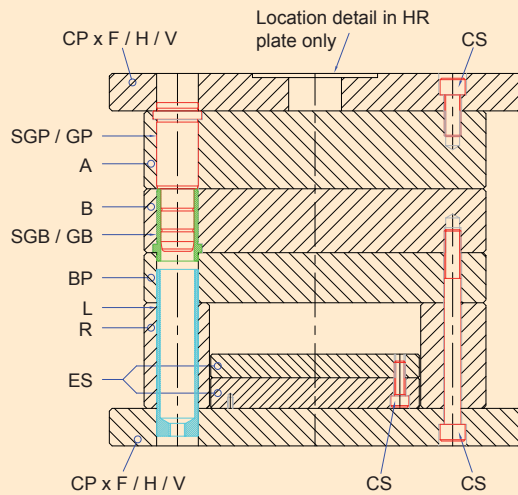
CODE	L
CS 12 x 20	20
CS 12 x 25	25
CS 12 x 30	30
CS 12 x 35	35
CS 12 x 40	40
CS 12 x 45	45
CS 12 x 50	50
CS 12 x 60	60
CS 12 x 70	70
CS 12 x 80	80
CS 12 x 90	90
CS 12 x 100	100
CS 12 x 110	110
CS 12 x 120	120
CS 12 x 130	130
CS 12 x 140	140
CS 12 x 150	150
CS 12 x 160	160
CS 12 x 180	180
CS 12 x 200	200
CS 12 x 250	250



M	12
MC	13
MHC	19.25
MHD	12.5

T=16	T1=16	
T=20	T1=20	
T=26	T1=15	T2=23
T≥36	T1=22	T2=30

PT1	30 H7
PG1	36
VG1	6

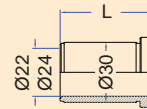
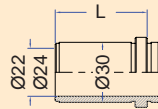
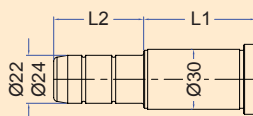
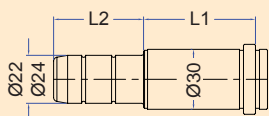


Download CAD data at
www.dms-diemould.co.uk
 enquiries to -
sales@dms-diemould.co.uk

Order Example
 Cavity Plate - Series - Thickness - Material
 A - 156 x 346 - 56 - 1730

●	Standard
◆	Available on request

196 x 346	X	X1	X2	X3	Y	Y1	Y2	Y3	Y4	Thickness (S)					
A	196	150	150		346	294	234			20 / 26 / 36 / 46 / 56 / 66 / 76 / 96	●	●	◆	◆	◆
B	196	150	150		346	294	234			20 / 26 / 36 / 46 / 56 / 66 / 76 / 96	●	●	◆	◆	◆
BP	196	150	150		346	294	234			36	●	◆		◆	
CPxF	196	150	150		346	294	234			26	●	◆		◆	
CPxH	246	150	150		346	294	234			26	●	◆		◆	
CPxHR	246	150	150		346	294	234			26	●	◆		◆	
CPxOSH	296	150	150		346	294	234			26	●	◆		◆	
CPxV	196	150	150		396	294	234			26	●	◆		◆	
CPxOSV	196	150	150		446	294	234			26	●	◆		◆	
ES	108			86	346			324	290	28 (12 + 16)	●			◆	
R	43	150	150		346	294	234			56 / 76 / 96	●			◆	

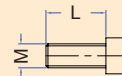
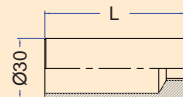


CODE	L1	L2
SGP 22 / 24 - 16 x 25	16	25
SGP 22 / 24 - 16 x 45		45
SGP 22 / 24 - 16 x 65		65
SGP 22 / 24 - 20 x 25	20	25
SGP 22 / 24 - 20 x 45		45
SGP 22 / 24 - 20 x 65		65
SGP 22 / 24 - 20 x 85		85
SGP 22 / 24 - 20 x 100		100
SGP 22 / 24 - 26 x 35	26	35
SGP 22 / 24 - 26 x 45		45
SGP 22 / 24 - 26 x 65		65
SGP 22 / 24 - 26 x 85		85
SGP 22 / 24 - 26 x 100		100
SGP 22 / 24 - 26 x 120		120
SGP 22 / 24 - 26 x 160		160
SGP 22 / 24 - 26 x 200		200
SGP 22 / 24 - 36 x 45	36	45
SGP 22 / 24 - 36 x 65		65
SGP 22 / 24 - 36 x 85		85
SGP 22 / 24 - 36 x 100		100
SGP 22 / 24 - 36 x 120		120
SGP 22 / 24 - 36 x 160		160
SGP 22 / 24 - 36 x 200		200
SGP 22 / 24 - 36 x 240		240
SGP 22 / 24 - 46 x 45	46	45
SGP 22 / 24 - 46 x 65		65
SGP 22 / 24 - 46 x 85		85
SGP 22 / 24 - 46 x 100		100
SGP 22 / 24 - 46 x 120		120
SGP 22 / 24 - 46 x 160		160
SGP 22 / 24 - 56 x 45	56	45
SGP 22 / 24 - 56 x 65		65
SGP 22 / 24 - 56 x 100		100
SGP 22 / 24 - 56 x 120		120
SGP 22 / 24 - 56 x 160		160
SGP 22 / 24 - 66 x 65	66	65
SGP 22 / 24 - 66 x 100		100
SGP 22 / 24 - 66 x 160		160
SGP 22 / 24 - 76 x 65	76	65
SGP 22 / 24 - 76 x 100		100
SGP 22 / 24 - 76 x 120		120
SGP 22 / 24 - 76 x 160		160
SGP 22 / 24 - 96 x 65	96	65
SGP 22 / 24 - 96 x 100		100
SGP 22 / 24 - 96 x 160		160
SGP 22 / 24 - 116 x 65	116	65
SGP 22 / 24 - 116 x 100		100
SGP 22 / 24 - 116 x 160		160

CODE	L1	L2
GP 22 / 24 - 16 x 25	16	25
GP 22 / 24 - 16 x 45		45
GP 22 / 24 - 16 x 65		65
GP 22 / 24 - 20 x 25	20	25
GP 22 / 24 - 20 x 45		45
GP 22 / 24 - 20 x 65		65
GP 22 / 24 - 20 x 85		85
GP 22 / 24 - 20 x 100		100
GP 22 / 24 - 26 x 35	26	35
GP 22 / 24 - 26 x 45		45
GP 22 / 24 - 26 x 65		65
GP 22 / 24 - 26 x 85		85
GP 22 / 24 - 26 x 100		100
GP 22 / 24 - 26 x 120		120
GP 22 / 24 - 26 x 160		160
GP 22 / 24 - 26 x 200		200
GP 22 / 24 - 36 x 45	36	45
GP 22 / 24 - 36 x 65		65
GP 22 / 24 - 36 x 85		85
GP 22 / 24 - 36 x 100		100
GP 22 / 24 - 36 x 120		120
GP 22 / 24 - 36 x 160		160
GP 22 / 24 - 36 x 200		200
GP 22 / 24 - 36 x 240		240
GP 22 / 24 - 46 x 45	46	45
GP 22 / 24 - 46 x 65		65
GP 22 / 24 - 46 x 85		85
GP 22 / 24 - 46 x 100		100
GP 22 / 24 - 46 x 120		120
GP 22 / 24 - 46 x 160		160
GP 22 / 24 - 56 x 45	56	45
GP 22 / 24 - 56 x 65		65
GP 22 / 24 - 56 x 100		100
GP 22 / 24 - 56 x 120		120
GP 22 / 24 - 56 x 160		160
GP 22 / 24 - 66 x 65	66	65
GP 22 / 24 - 66 x 100		100
GP 22 / 24 - 66 x 160		160
GP 22 / 24 - 76 x 65	76	65
GP 22 / 24 - 76 x 100		100
GP 22 / 24 - 76 x 120		120
GP 22 / 24 - 76 x 160		160
GP 22 / 24 - 96 x 65	96	65
GP 22 / 24 - 96 x 100		100
GP 22 / 24 - 96 x 160		160
GP 22 / 24 - 116 x 65	116	65
GP 22 / 24 - 116 x 100		100
GP 22 / 24 - 116 x 160		160

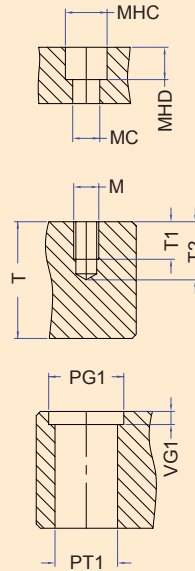
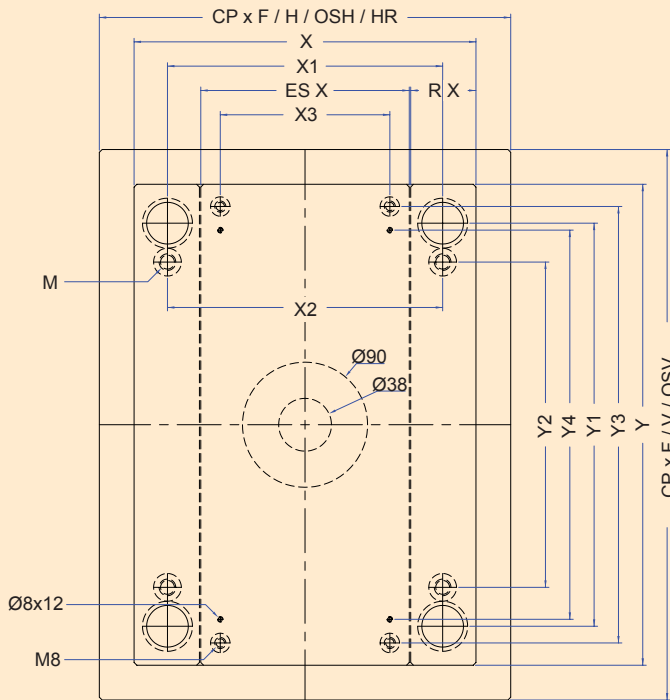
CODE	L
SGB 22 / 24 x 16	16
SGB 22 / 24 x 20	20
SGB 22 / 24 x 26	26
SGB 22 / 24 x 36	36
SGB 22 / 24 x 46	46
SGB 22 / 24 x 56	56
SGB 22 / 24 x 66	66
SGB 22 / 24 x 76	76
SGB 22 / 24 x 96	96
SGB 22 / 24 x 116	116

CODE	L
GB 22 / 24 x 16	16
GB 22 / 24 x 20	20
GB 22 / 24 x 26	26
GB 22 / 24 x 36	36
GB 22 / 24 x 46	46
GB 22 / 24 x 56	56
GB 22 / 24 x 66	66
GB 22 / 24 x 76	76
GB 22 / 24 x 96	96
GB 22 / 24 x 116	116



CODE	L
L 30 x 60	60
L 30 x 80	80
L 30 x 100	100
L 30 x 120	120
L 30 x 140	140

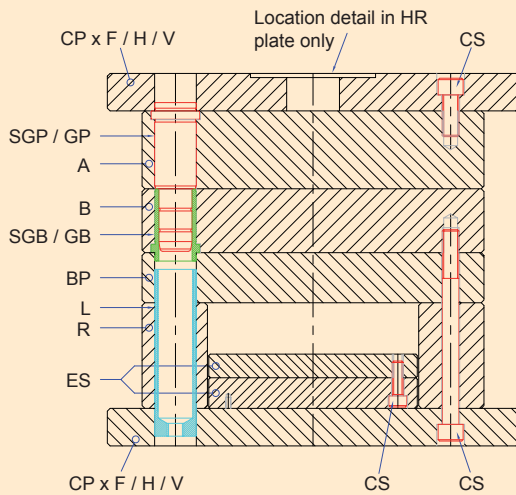
CODE	L
CS 12 x 20	20
CS 12 x 25	25
CS 12 x 30	30
CS 12 x 35	35
CS 12 x 40	40
CS 12 x 45	45
CS 12 x 50	50
CS 12 x 60	60
CS 12 x 70	70
CS 12 x 80	80
CS 12 x 90	90
CS 12 x 100	100
CS 12 x 110	110
CS 12 x 120	120
CS 12 x 130	130
CS 12 x 140	140
CS 12 x 150	150
CS 12 x 160	160
CS 12 x 180	180
CS 12 x 200	200
CS 12 x 250	250



M	12
MC	13
MHC	19.25
MHD	12.5

T=16	T1=16	
T=20	T1=20	
T=26	T1=15	T2=23
T≥36	T1=22	T2=30

PT1	30 H7
PG1	36
VG1	6

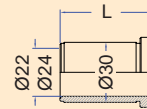
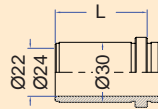
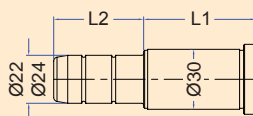
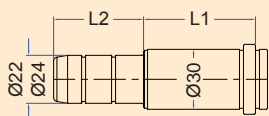


Download CAD data at
www.dms-diemould.co.uk
 enquiries to -
sales@dms-diemould.co.uk

Order Example
 Cavity Plate - Series - Thickness - Material
 A - 196 x 396 - 56 - 1730

●	Standard
◆	Available on request

196 x 396	X	X1	X2	X3	Y	Y1	Y2	Y3	Y4	Thickness (S)	1730	2311	2312	2085	2767
A	196	150	150		396	344	284			20 / 26 / 36 / 46 / 56 / 66 / 76 / 96	●	●	◆	◆	◆
B	196	150	150		396	344	284			20 / 26 / 36 / 46 / 56 / 66 / 76 / 96	●	●	◆	◆	◆
BP	196	150	150		396	344	284			36	●	◆		◆	
CPxF	196	150	150		396	344	284			26	●	◆		◆	
CPxH	246	150	150		396	344	284			26	●	◆		◆	
CPxHR	246	150	150		396	344	284			26	●	◆		◆	
CPxOSH	296	150	150		396	344	284			26	●	◆		◆	
CPxV	196	150	150		446	344	284			26	●	◆		◆	
CPxOSV	196	150	150		496	344	284			26	●	◆		◆	
ES	108			86	396			374	340	28 (12 + 16)	●			◆	
R	43	150	150		396	344	284			56 / 76 / 96	●			◆	

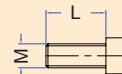
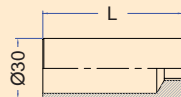


CODE	L1	L2
SGP 22 / 24 - 16 x 25	16	25
SGP 22 / 24 - 16 x 45		45
SGP 22 / 24 - 16 x 65		65
SGP 22 / 24 - 20 x 25	20	25
SGP 22 / 24 - 20 x 45		45
SGP 22 / 24 - 20 x 65		65
SGP 22 / 24 - 20 x 85		85
SGP 22 / 24 - 20 x 100		100
SGP 22 / 24 - 26 x 35	26	35
SGP 22 / 24 - 26 x 45		45
SGP 22 / 24 - 26 x 65		65
SGP 22 / 24 - 26 x 85		85
SGP 22 / 24 - 26 x 100		100
SGP 22 / 24 - 26 x 120		120
SGP 22 / 24 - 26 x 160		160
SGP 22 / 24 - 26 x 200		200
SGP 22 / 24 - 36 x 45	36	45
SGP 22 / 24 - 36 x 65		65
SGP 22 / 24 - 36 x 85		85
SGP 22 / 24 - 36 x 100		100
SGP 22 / 24 - 36 x 120		120
SGP 22 / 24 - 36 x 160		160
SGP 22 / 24 - 36 x 200		200
SGP 22 / 24 - 36 x 240		240
SGP 22 / 24 - 46 x 45	46	45
SGP 22 / 24 - 46 x 65		65
SGP 22 / 24 - 46 x 85		85
SGP 22 / 24 - 46 x 100		100
SGP 22 / 24 - 46 x 120		120
SGP 22 / 24 - 46 x 160		160
SGP 22 / 24 - 56 x 45	56	45
SGP 22 / 24 - 56 x 65		65
SGP 22 / 24 - 56 x 100		100
SGP 22 / 24 - 56 x 120		120
SGP 22 / 24 - 56 x 160		160
SGP 22 / 24 - 66 x 65	66	65
SGP 22 / 24 - 66 x 100		100
SGP 22 / 24 - 66 x 160		160
SGP 22 / 24 - 76 x 65	76	65
SGP 22 / 24 - 76 x 100		100
SGP 22 / 24 - 76 x 120		120
SGP 22 / 24 - 76 x 160		160
SGP 22 / 24 - 96 x 65	96	65
SGP 22 / 24 - 96 x 100		100
SGP 22 / 24 - 96 x 160		160
SGP 22 / 24 - 116 x 65	116	65
SGP 22 / 24 - 116 x 100		100
SGP 22 / 24 - 116 x 160		160

CODE	L1	L2
GP 22 / 24 - 16 x 25	16	25
GP 22 / 24 - 16 x 45		45
GP 22 / 24 - 16 x 65		65
GP 22 / 24 - 20 x 25	20	25
GP 22 / 24 - 20 x 45		45
GP 22 / 24 - 20 x 65		65
GP 22 / 24 - 20 x 85		85
GP 22 / 24 - 20 x 100		100
GP 22 / 24 - 26 x 35	26	35
GP 22 / 24 - 26 x 45		45
GP 22 / 24 - 26 x 65		65
GP 22 / 24 - 26 x 85		85
GP 22 / 24 - 26 x 100		100
GP 22 / 24 - 26 x 120		120
GP 22 / 24 - 26 x 160		160
GP 22 / 24 - 26 x 200		200
GP 22 / 24 - 36 x 45	36	45
GP 22 / 24 - 36 x 65		65
GP 22 / 24 - 36 x 85		85
GP 22 / 24 - 36 x 100		100
GP 22 / 24 - 36 x 120		120
GP 22 / 24 - 36 x 160		160
GP 22 / 24 - 36 x 200		200
GP 22 / 24 - 36 x 240		240
GP 22 / 24 - 46 x 45	46	45
GP 22 / 24 - 46 x 65		65
GP 22 / 24 - 46 x 85		85
GP 22 / 24 - 46 x 100		100
GP 22 / 24 - 46 x 120		120
GP 22 / 24 - 46 x 160		160
GP 22 / 24 - 56 x 45	56	45
GP 22 / 24 - 56 x 65		65
GP 22 / 24 - 56 x 100		100
GP 22 / 24 - 56 x 120		120
GP 22 / 24 - 56 x 160		160
GP 22 / 24 - 66 x 65	66	65
GP 22 / 24 - 66 x 100		100
GP 22 / 24 - 66 x 160		160
GP 22 / 24 - 76 x 65	76	65
GP 22 / 24 - 76 x 100		100
GP 22 / 24 - 76 x 120		120
GP 22 / 24 - 76 x 160		160
GP 22 / 24 - 96 x 65	96	65
GP 22 / 24 - 96 x 100		100
GP 22 / 24 - 96 x 160		160
GP 22 / 24 - 116 x 65	116	65
GP 22 / 24 - 116 x 100		100
GP 22 / 24 - 116 x 160		160

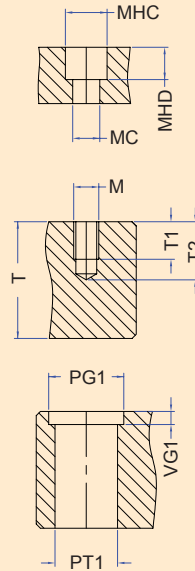
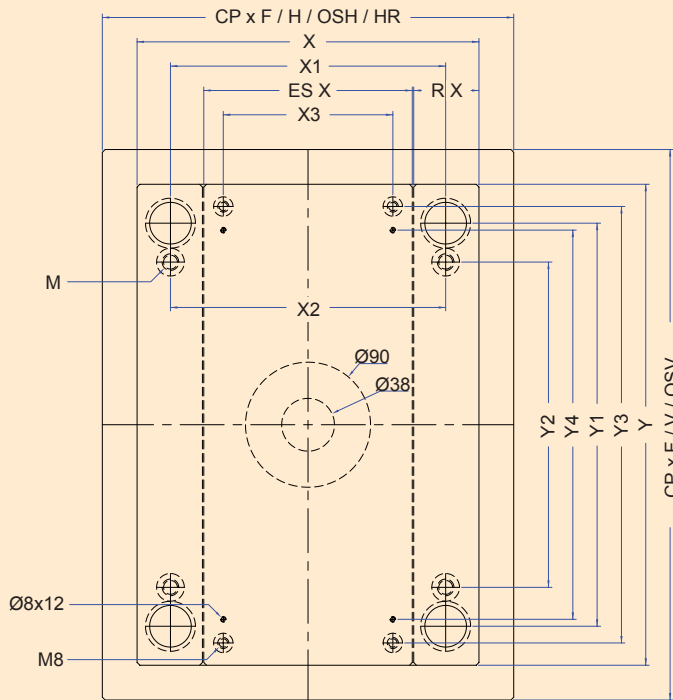
CODE	L
SGB 22 / 24 x 16	16
SGB 22 / 24 x 20	20
SGB 22 / 24 x 26	26
SGB 22 / 24 x 36	36
SGB 22 / 24 x 46	46
SGB 22 / 24 x 56	56
SGB 22 / 24 x 66	66
SGB 22 / 24 x 76	76
SGB 22 / 24 x 96	96
SGB 22 / 24 x 116	116

CODE	L
GB 22 / 24 x 16	16
GB 22 / 24 x 20	20
GB 22 / 24 x 26	26
GB 22 / 24 x 36	36
GB 22 / 24 x 46	46
GB 22 / 24 x 56	56
GB 22 / 24 x 66	66
GB 22 / 24 x 76	76
GB 22 / 24 x 96	96
GB 22 / 24 x 116	116



CODE	L
L 30 x 60	60
L 30 x 80	80
L 30 x 100	100
L 30 x 120	120
L 30 x 140	140

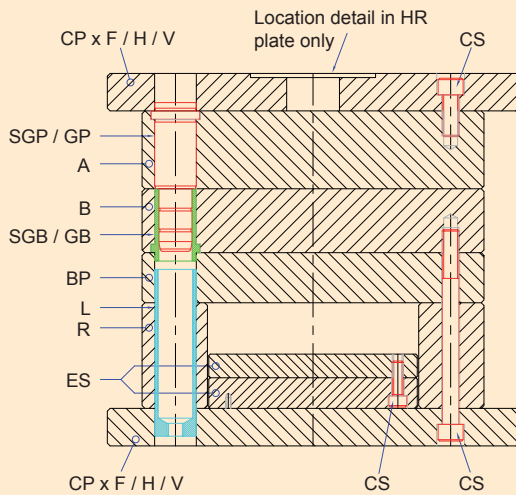
CODE	L
CS 12 x 20	20
CS 12 x 25	25
CS 12 x 30	30
CS 12 x 35	35
CS 12 x 40	40
CS 12 x 45	45
CS 12 x 50	50
CS 12 x 60	60
CS 12 x 70	70
CS 12 x 80	80
CS 12 x 90	90
CS 12 x 100	100
CS 12 x 110	110
CS 12 x 120	120
CS 12 x 130	130
CS 12 x 140	140
CS 12 x 150	150
CS 12 x 160	160
CS 12 x 180	180
CS 12 x 200	200
CS 12 x 250	250



M	10
MC	11
MHC	17.25
MHD	10.5

T=16	T1=16	
T=20	T1=11	T2=18
T=26	T1=16	T2=23
T>26	T1=19	T2=26

PT1	26 H7
PG1	32
VG1	6

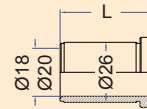
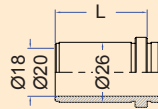
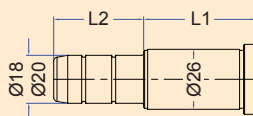
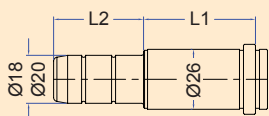


Download CAD data at www.dms-diemould.co.uk
enquiries to - sales@dms-diemould.co.uk

Order Example
Cavity Plate - Series - Thickness - Material
A - 218 x 246 - 56 - 1730

●	Standard
◆	Available on request

218 x 246	X	X1	X2	X3	Y	Y1	Y2	Y3	Y4	Thickness (S)	1730	2311	2312	2085	2767
A	218	176	176		246	202	150			16 / 20 / 26 / 36 / 46 / 56 / 76 / 96	●	●	◆	◆	◆
B	218	176	176		246	202	150			16 / 20 / 26 / 36 / 46 / 56 / 76 / 96	●	●	◆	◆	◆
BP	218	176	176		246	202	150			36	●	◆		◆	
CPxF	218	176	176		246	202	150			26	●	◆		◆	
CPxH											◆	◆		◆	
CPxHR											◆	◆		◆	
CPxOSH											◆	◆		◆	
CPxV	218	176	176		296	202	150			26	●	◆		◆	
CPxOSV											◆	◆		◆	
ES	140			118	246			224	190	28 (12 + 16)	●			◆	
R	38	176	176		246	202	150			46 / 56 / 76	●			◆	

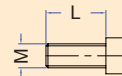
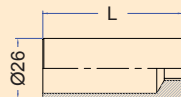


CODE	L1	L2
SGP 18 / 20 - 16 x 25	16	25
SGP 18 / 20 - 16 x 35		35
SGP 18 / 20 - 16 x 55		55
SGP 18 / 20 - 20 x 25	20	25
SGP 18 / 20 - 20 x 35		35
SGP 18 / 20 - 20 x 55		55
SGP 18 / 20 - 20 x 75		75
SGP 18 / 20 - 20 x 100		100
SGP 18 / 20 - 26 x 35	26	35
SGP 18 / 20 - 26 x 45		45
SGP 18 / 20 - 26 x 65		65
SGP 18 / 20 - 26 x 85		85
SGP 18 / 20 - 26 x 100		100
SGP 18 / 20 - 26 x 120		120
SGP 18 / 20 - 26 x 160		160
SGP 18 / 20 - 26 x 200		200
SGP 18 / 20 - 36 x 35	36	35
SGP 18 / 20 - 36 x 45		45
SGP 18 / 20 - 36 x 65		65
SGP 18 / 20 - 36 x 85		85
SGP 18 / 20 - 36 x 100		100
SGP 18 / 20 - 36 x 120		120
SGP 18 / 20 - 36 x 160		160
SGP 18 / 20 - 36 x 200		200
SGP 18 / 20 - 36 x 240		240
SGP 18 / 20 - 46 x 45	46	45
SGP 18 / 20 - 46 x 65		65
SGP 18 / 20 - 46 x 85		85
SGP 18 / 20 - 46 x 100		100
SGP 18 / 20 - 46 x 120		120
SGP 18 / 20 - 46 x 160		160
SGP 18 / 20 - 56 x 45	56	45
SGP 18 / 20 - 56 x 65		65
SGP 18 / 20 - 56 x 100		100
SGP 18 / 20 - 56 x 160		160
SGP 18 / 20 - 66 x 65	66	65
SGP 18 / 20 - 66 x 100		100
SGP 18 / 20 - 66 x 160		160
SGP 18 / 20 - 76 x 65	76	65
SGP 18 / 20 - 76 x 100		100
SGP 18 / 20 - 76 x 160		160
SGP 18 / 20 - 96 x 65	96	65
SGP 18 / 20 - 96 x 100		100
SGP 18 / 20 - 96 x 160		160

CODE	L1	L2
GP 18 / 20 - 16 x 25	16	25
GP 18 / 20 - 16 x 35		35
GP 18 / 20 - 16 x 55		55
GP 18 / 20 - 20 x 25	20	25
GP 18 / 20 - 20 x 35		35
GP 18 / 20 - 20 x 55		55
GP 18 / 20 - 20 x 75		75
GP 18 / 20 - 20 x 100		100
GP 18 / 20 - 26 x 35	26	35
GP 18 / 20 - 26 x 45		45
GP 18 / 20 - 26 x 65		65
GP 18 / 20 - 26 x 85		85
GP 18 / 20 - 26 x 100		100
GP 18 / 20 - 26 x 120		120
GP 18 / 20 - 26 x 160		160
GP 18 / 20 - 26 x 200		200
GP 18 / 20 - 36 x 35	36	35
GP 18 / 20 - 36 x 45		45
GP 18 / 20 - 36 x 65		65
GP 18 / 20 - 36 x 85		85
GP 18 / 20 - 36 x 100		100
GP 18 / 20 - 36 x 120		120
GP 18 / 20 - 36 x 160		160
GP 18 / 20 - 36 x 200		200
GP 18 / 20 - 46 x 45	46	45
GP 18 / 20 - 46 x 65		65
GP 18 / 20 - 46 x 85		85
GP 18 / 20 - 46 x 100		100
GP 18 / 20 - 46 x 120		120
GP 18 / 20 - 46 x 160		160
GP 18 / 20 - 56 x 45	56	45
GP 18 / 20 - 56 x 65		65
GP 18 / 20 - 56 x 100		100
GP 18 / 20 - 56 x 160		160
GP 18 / 20 - 66 x 65	66	65
GP 18 / 20 - 66 x 100		100
GP 18 / 20 - 66 x 160		160
GP 18 / 20 - 76 x 65	76	65
GP 18 / 20 - 76 x 100		100
GP 18 / 20 - 76 x 160		160
GP 18 / 20 - 96 x 65	96	65
GP 18 / 20 - 96 x 100		100
GP 18 / 20 - 96 x 160		160

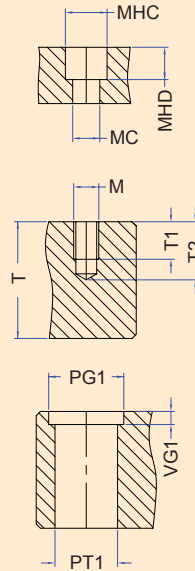
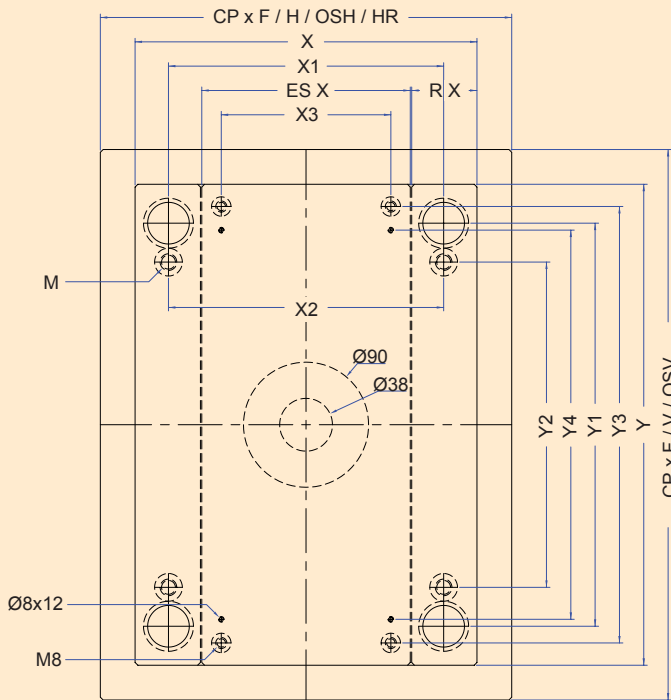
CODE	L
SGB 18 / 20 x 16	16
SGB 18 / 20 x 20	20
SGB 18 / 20 x 26	26
SGB 18 / 20 x 36	36
SGB 18 / 20 x 46	46
SGB 18 / 20 x 56	56
SGB 18 / 20 x 66	66
SGB 18 / 20 x 76	76
SGB 18 / 20 x 96	96

CODE	L
GB 18 / 20 x 16	16
GB 18 / 20 x 20	20
GB 18 / 20 x 26	26
GB 18 / 20 x 36	36
GB 18 / 20 x 46	46
GB 18 / 20 x 56	56
GB 18 / 20 x 66	66
GB 18 / 20 x 76	76
GB 18 / 20 x 96	96



CODE	L
L 26 x 40	40
L 26 x 60	60
L 26 x 80	80
L 26 x 100	100
L 26 x 120	120

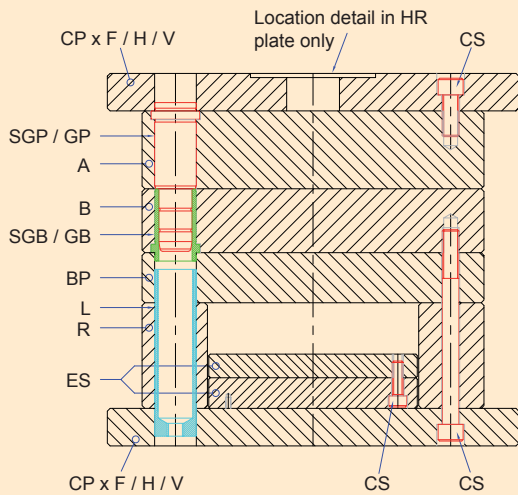
CODE	L
CS 10 x 20	20
CS 10 x 25	25
CS 10 x 30	30
CS 10 x 35	35
CS 10 x 40	40
CS 10 x 45	45
CS 10 x 50	50
CS 10 x 60	60
CS 10 x 70	70
CS 10 x 80	80
CS 10 x 90	90
CS 10 x 100	100
CS 10 x 110	110
CS 10 x 120	120
CS 10 x 130	130
CS 10 x 140	140
CS 10 x 150	150
CS 10 x 160	160
CS 10 x 200	200



M	12
MC	13
MHC	19.25
MHD	12.5

T=20	T1=20	
T=26	T1=15	T2=23
T≥36	T1=22	T2=30

PT1	30 H7
PG1	36
VG1	6

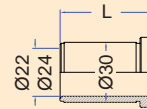
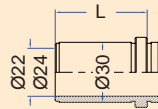
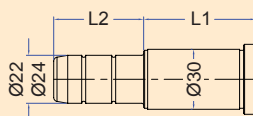
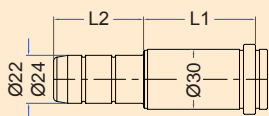


Download CAD data at
www.dms-diemould.co.uk
 enquiries to -
sales@dms-diemould.co.uk

Order Example
 Cavity Plate - Series - Thickness - Material
 A - 218 x 296 - 56 - 1730

●	Standard
◆	Available on request

218 x 296	X	X1	X2	X3	Y	Y1	Y2	Y3	Y4	Thickness (S)	1730	2311	2312	2085	2767
A	218	172	172		296	244	184			16 / 20 / 26 / 36 / 46 / 56 / 76 / 96	●	●	◆	◆	◆
B	218	172	172		296	244	184			16 / 20 / 26 / 36 / 46 / 56 / 76 / 96	●	●	◆	◆	◆
BP	218	172	172		296	244	184			36	●	◆		◆	
CPxF	218	172	172		296	244	184			26	●	◆		◆	
CPxH											◆	◆		◆	
CPxHR											◆	◆		◆	
CPxOSH											◆	◆		◆	
CPxV	218	172	172		346	244	184			26	●	◆		◆	
CPxOSV											◆	◆		◆	
ES	130			108	296			274	240	28 (12 + 16)	●			◆	
R	43	172	172		296	244	184			56 / 76 / 96	●			◆	

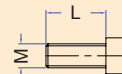
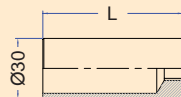


CODE	L1	L2
SGP 22 / 24 - 16 x 25	16	25
SGP 22 / 24 - 16 x 45		45
SGP 22 / 24 - 16 x 65		65
SGP 22 / 24 - 20 x 25	20	25
SGP 22 / 24 - 20 x 45		45
SGP 22 / 24 - 20 x 65		65
SGP 22 / 24 - 20 x 85		85
SGP 22 / 24 - 20 x 100		100
SGP 22 / 24 - 26 x 35	26	35
SGP 22 / 24 - 26 x 45		45
SGP 22 / 24 - 26 x 65		65
SGP 22 / 24 - 26 x 85		85
SGP 22 / 24 - 26 x 100		100
SGP 22 / 24 - 26 x 120		120
SGP 22 / 24 - 26 x 160		160
SGP 22 / 24 - 26 x 200		200
SGP 22 / 24 - 36 x 45	36	45
SGP 22 / 24 - 36 x 65		65
SGP 22 / 24 - 36 x 85		85
SGP 22 / 24 - 36 x 100		100
SGP 22 / 24 - 36 x 120		120
SGP 22 / 24 - 36 x 160		160
SGP 22 / 24 - 36 x 200		200
SGP 22 / 24 - 36 x 240		240
SGP 22 / 24 - 46 x 45	46	45
SGP 22 / 24 - 46 x 65		65
SGP 22 / 24 - 46 x 85		85
SGP 22 / 24 - 46 x 100		100
SGP 22 / 24 - 46 x 120		120
SGP 22 / 24 - 46 x 160		160
SGP 22 / 24 - 56 x 45	56	45
SGP 22 / 24 - 56 x 65		65
SGP 22 / 24 - 56 x 100		100
SGP 22 / 24 - 56 x 120		120
SGP 22 / 24 - 56 x 160		160
SGP 22 / 24 - 66 x 65	66	65
SGP 22 / 24 - 66 x 100		100
SGP 22 / 24 - 66 x 160		160
SGP 22 / 24 - 76 x 65	76	65
SGP 22 / 24 - 76 x 100		100
SGP 22 / 24 - 76 x 120		120
SGP 22 / 24 - 76 x 160		160
SGP 22 / 24 - 96 x 65	96	65
SGP 22 / 24 - 96 x 100		100
SGP 22 / 24 - 96 x 160		160
SGP 22 / 24 - 116 x 65	116	65
SGP 22 / 24 - 116 x 100		100
SGP 22 / 24 - 116 x 160		160

CODE	L1	L2
GP 22 / 24 - 16 x 25	16	25
GP 22 / 24 - 16 x 45		45
GP 22 / 24 - 16 x 65		65
GP 22 / 24 - 20 x 25	20	25
GP 22 / 24 - 20 x 45		45
GP 22 / 24 - 20 x 65		65
GP 22 / 24 - 20 x 85		85
GP 22 / 24 - 20 x 100		100
GP 22 / 24 - 26 x 35	26	35
GP 22 / 24 - 26 x 45		45
GP 22 / 24 - 26 x 65		65
GP 22 / 24 - 26 x 85		85
GP 22 / 24 - 26 x 100		100
GP 22 / 24 - 26 x 120		120
GP 22 / 24 - 26 x 160		160
GP 22 / 24 - 26 x 200		200
GP 22 / 24 - 36 x 45	36	45
GP 22 / 24 - 36 x 65		65
GP 22 / 24 - 36 x 85		85
GP 22 / 24 - 36 x 100		100
GP 22 / 24 - 36 x 120		120
GP 22 / 24 - 36 x 160		160
GP 22 / 24 - 36 x 200		200
GP 22 / 24 - 36 x 240		240
GP 22 / 24 - 46 x 45	46	45
GP 22 / 24 - 46 x 65		65
GP 22 / 24 - 46 x 85		85
GP 22 / 24 - 46 x 100		100
GP 22 / 24 - 46 x 120		120
GP 22 / 24 - 46 x 160		160
GP 22 / 24 - 56 x 45	56	45
GP 22 / 24 - 56 x 65		65
GP 22 / 24 - 56 x 100		100
GP 22 / 24 - 56 x 120		120
GP 22 / 24 - 56 x 160		160
GP 22 / 24 - 66 x 65	66	65
GP 22 / 24 - 66 x 100		100
GP 22 / 24 - 66 x 160		160
GP 22 / 24 - 76 x 65	76	65
GP 22 / 24 - 76 x 100		100
GP 22 / 24 - 76 x 120		120
GP 22 / 24 - 76 x 160		160
GP 22 / 24 - 96 x 65	96	65
GP 22 / 24 - 96 x 100		100
GP 22 / 24 - 96 x 160		160
GP 22 / 24 - 116 x 65	116	65
GP 22 / 24 - 116 x 100		100
GP 22 / 24 - 116 x 160		160

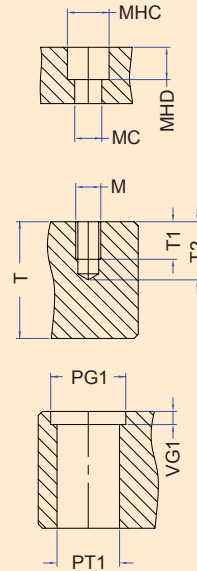
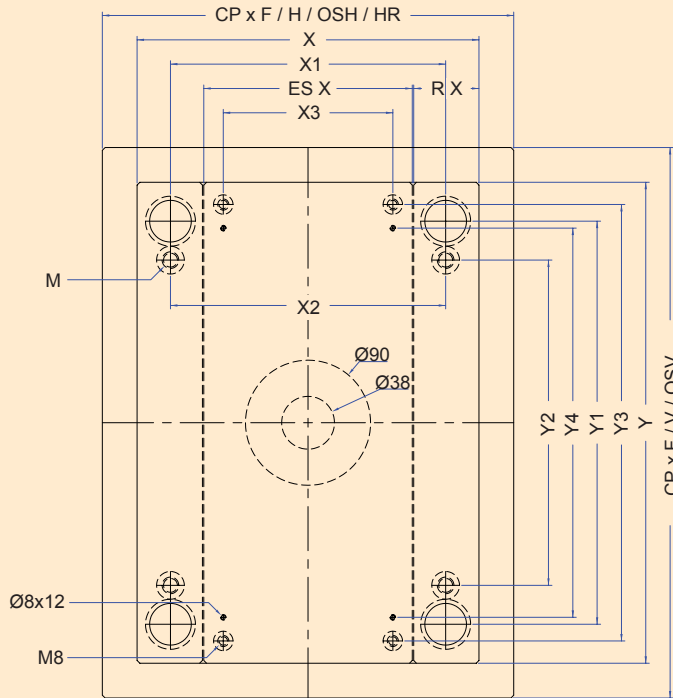
CODE	L
SGB 22 / 24 x 16	16
SGB 22 / 24 x 20	20
SGB 22 / 24 x 26	26
SGB 22 / 24 x 36	36
SGB 22 / 24 x 46	46
SGB 22 / 24 x 56	56
SGB 22 / 24 x 66	66
SGB 22 / 24 x 76	76
SGB 22 / 24 x 96	96
SGB 22 / 24 x 116	116

CODE	L
GB 22 / 24 x 16	16
GB 22 / 24 x 20	20
GB 22 / 24 x 26	26
GB 22 / 24 x 36	36
GB 22 / 24 x 46	46
GB 22 / 24 x 56	56
GB 22 / 24 x 66	66
GB 22 / 24 x 76	76
GB 22 / 24 x 96	96
GB 22 / 24 x 116	116



CODE	L
L 30 x 60	60
L 30 x 80	80
L 30 x 100	100
L 30 x 120	120
L 30 x 140	140

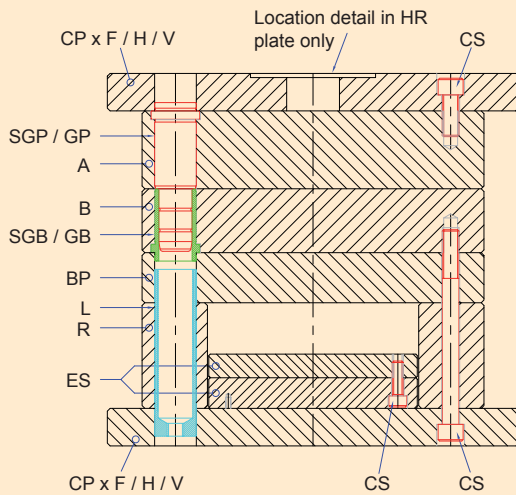
CODE	L
CS 12 x 20	20
CS 12 x 25	25
CS 12 x 30	30
CS 12 x 35	35
CS 12 x 40	40
CS 12 x 45	45
CS 12 x 50	50
CS 12 x 60	60
CS 12 x 70	70
CS 12 x 80	80
CS 12 x 90	90
CS 12 x 100	100
CS 12 x 110	110
CS 12 x 120	120
CS 12 x 130	130
CS 12 x 140	140
CS 12 x 150	150
CS 12 x 160	160
CS 12 x 180	180
CS 12 x 200	200
CS 12 x 250	250



M	12
MC	13
MHC	19.25
MHD	12.5

T=16	T1=16	
T=20	T1=20	
T=26	T1=15	T2=23
T≥36	T1=22	T2=30

PT1	30 H7
PG1	36
VG1	6

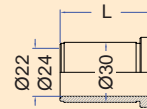
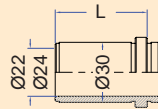
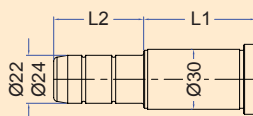
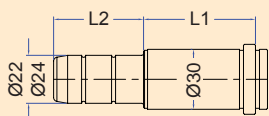


Download CAD data at
www.dms-diemould.co.uk
 enquiries to -
sales@dms-diemould.co.uk

Order Example
 Cavity Plate - Series - Thickness - Material
 A - 246 x 246 - 56 - 1730

●	Standard
◆	Available on request

246 x 246	X	X1	X2	X3	Y	Y1	Y2	Y3	Y4	Thickness (S)	1730	2311	2312	2085	2767
A	246	200	200		246	194	134			16 / 20 / 26 / 36 / 46 / 56 / 66 / 76 / 96	●	●	◆	◆	◆
B	246	200	200		246	194	134			16 / 20 / 26 / 36 / 46 / 56 / 66 / 76 / 96	●	●	◆	◆	◆
BP	246	200	200		246	194	134			36	●	◆		◆	
CPxF	246	200	200		246	194	134			26	●	◆		◆	
CPxH	296	200	200		246	194	134			26	●	◆		◆	
CPxHR	296	200	200		246	194	134			26	●	◆		◆	
CPxOSH	346	200	200		246	194	134			26	●	◆		◆	
CPxV	246	200	200		296	194	134			26	●	◆		◆	
CPxOSV	246	200	200		346	194	134			26	●	◆		◆	
ES	158			136	246			224	190	28 (12 + 16)	●			◆	
R	43	200	200		246	194	134			56 / 76 / 96	●			◆	

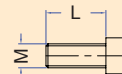
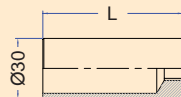


CODE	L1	L2
SGP 22 / 24 - 16 x 25	16	25
SGP 22 / 24 - 16 x 45		45
SGP 22 / 24 - 16 x 65		65
SGP 22 / 24 - 20 x 25	20	25
SGP 22 / 24 - 20 x 45		45
SGP 22 / 24 - 20 x 65		65
SGP 22 / 24 - 20 x 85		85
SGP 22 / 24 - 20 x 100		100
SGP 22 / 24 - 26 x 35	26	35
SGP 22 / 24 - 26 x 45		45
SGP 22 / 24 - 26 x 65		65
SGP 22 / 24 - 26 x 85		85
SGP 22 / 24 - 26 x 100		100
SGP 22 / 24 - 26 x 120		120
SGP 22 / 24 - 26 x 160		160
SGP 22 / 24 - 26 x 200		200
SGP 22 / 24 - 36 x 45	36	45
SGP 22 / 24 - 36 x 65		65
SGP 22 / 24 - 36 x 85		85
SGP 22 / 24 - 36 x 100		100
SGP 22 / 24 - 36 x 120		120
SGP 22 / 24 - 36 x 160		160
SGP 22 / 24 - 36 x 200		200
SGP 22 / 24 - 36 x 240		240
SGP 22 / 24 - 46 x 45	46	45
SGP 22 / 24 - 46 x 65		65
SGP 22 / 24 - 46 x 85		85
SGP 22 / 24 - 46 x 100		100
SGP 22 / 24 - 46 x 120		120
SGP 22 / 24 - 46 x 160		160
SGP 22 / 24 - 56 x 45	56	45
SGP 22 / 24 - 56 x 65		65
SGP 22 / 24 - 56 x 100		100
SGP 22 / 24 - 56 x 120		120
SGP 22 / 24 - 56 x 160		160
SGP 22 / 24 - 66 x 65	66	65
SGP 22 / 24 - 66 x 100		100
SGP 22 / 24 - 66 x 160		160
SGP 22 / 24 - 76 x 65	76	65
SGP 22 / 24 - 76 x 100		100
SGP 22 / 24 - 76 x 120		120
SGP 22 / 24 - 76 x 160		160
SGP 22 / 24 - 96 x 65	96	65
SGP 22 / 24 - 96 x 100		100
SGP 22 / 24 - 96 x 160		160
SGP 22 / 24 - 116 x 65	116	65
SGP 22 / 24 - 116 x 100		100
SGP 22 / 24 - 116 x 160		160

CODE	L1	L2
GP 22 / 24 - 16 x 25	16	25
GP 22 / 24 - 16 x 45		45
GP 22 / 24 - 16 x 65		65
GP 22 / 24 - 20 x 25	20	25
GP 22 / 24 - 20 x 45		45
GP 22 / 24 - 20 x 65		65
GP 22 / 24 - 20 x 85		85
GP 22 / 24 - 20 x 100		100
GP 22 / 24 - 26 x 35	26	35
GP 22 / 24 - 26 x 45		45
GP 22 / 24 - 26 x 65		65
GP 22 / 24 - 26 x 85		85
GP 22 / 24 - 26 x 100		100
GP 22 / 24 - 26 x 120		120
GP 22 / 24 - 26 x 160		160
GP 22 / 24 - 26 x 200		200
GP 22 / 24 - 36 x 45	36	45
GP 22 / 24 - 36 x 65		65
GP 22 / 24 - 36 x 85		85
GP 22 / 24 - 36 x 100		100
GP 22 / 24 - 36 x 120		120
GP 22 / 24 - 36 x 160		160
GP 22 / 24 - 36 x 200		200
GP 22 / 24 - 36 x 240		240
GP 22 / 24 - 46 x 45	46	45
GP 22 / 24 - 46 x 65		65
GP 22 / 24 - 46 x 85		85
GP 22 / 24 - 46 x 100		100
GP 22 / 24 - 46 x 120		120
GP 22 / 24 - 46 x 160		160
GP 22 / 24 - 56 x 45	56	45
GP 22 / 24 - 56 x 65		65
GP 22 / 24 - 56 x 100		100
GP 22 / 24 - 56 x 120		120
GP 22 / 24 - 56 x 160		160
GP 22 / 24 - 66 x 65	66	65
GP 22 / 24 - 66 x 100		100
GP 22 / 24 - 66 x 160		160
GP 22 / 24 - 76 x 65	76	65
GP 22 / 24 - 76 x 100		100
GP 22 / 24 - 76 x 120		120
GP 22 / 24 - 76 x 160		160
GP 22 / 24 - 96 x 65	96	65
GP 22 / 24 - 96 x 100		100
GP 22 / 24 - 96 x 160		160
GP 22 / 24 - 116 x 65	116	65
GP 22 / 24 - 116 x 100		100
GP 22 / 24 - 116 x 160		160

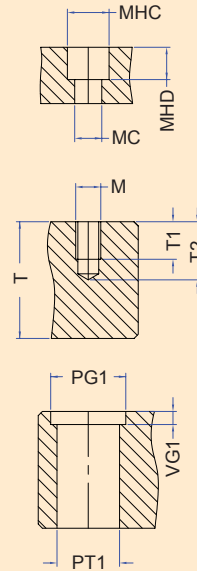
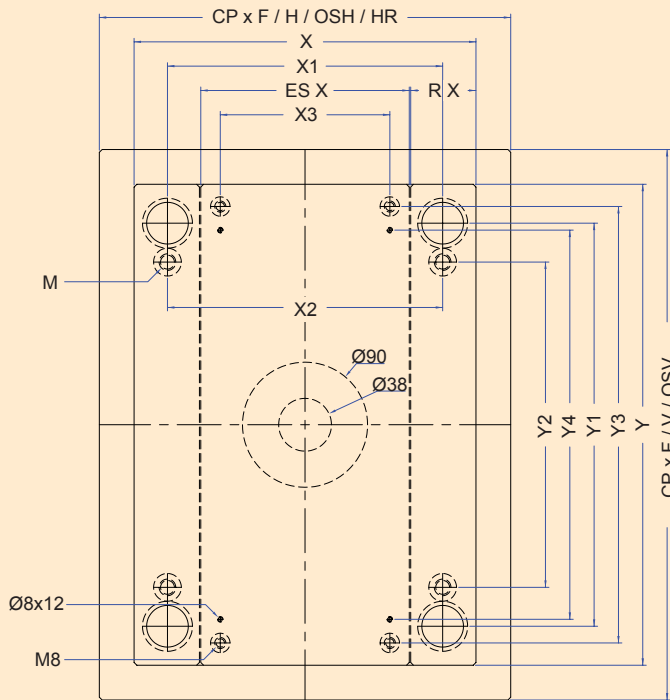
CODE	L
SGB 22 / 24 x 16	16
SGB 22 / 24 x 20	20
SGB 22 / 24 x 26	26
SGB 22 / 24 x 36	36
SGB 22 / 24 x 46	46
SGB 22 / 24 x 56	56
SGB 22 / 24 x 66	66
SGB 22 / 24 x 76	76
SGB 22 / 24 x 96	96
SGB 22 / 24 x 116	116

CODE	L
GB 22 / 24 x 16	16
GB 22 / 24 x 20	20
GB 22 / 24 x 26	26
GB 22 / 24 x 36	36
GB 22 / 24 x 46	46
GB 22 / 24 x 56	56
GB 22 / 24 x 66	66
GB 22 / 24 x 76	76
GB 22 / 24 x 96	96
GB 22 / 24 x 116	116



CODE	L
L 30 x 60	60
L 30 x 80	80
L 30 x 100	100
L 30 x 120	120
L 30 x 140	140

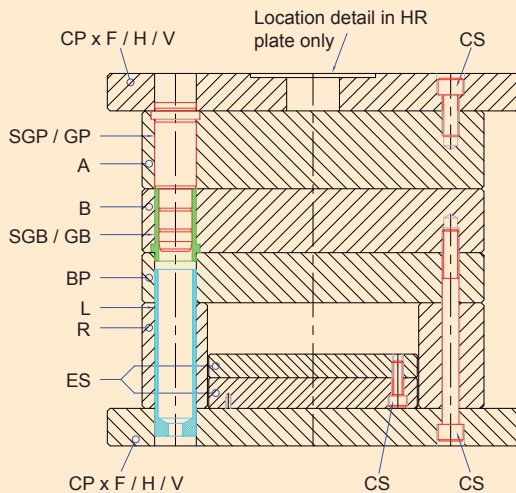
CODE	L
CS 12 x 20	20
CS 12 x 25	25
CS 12 x 30	30
CS 12 x 35	35
CS 12 x 40	40
CS 12 x 45	45
CS 12 x 50	50
CS 12 x 60	60
CS 12 x 70	70
CS 12 x 80	80
CS 12 x 90	90
CS 12 x 100	100
CS 12 x 110	110
CS 12 x 120	120
CS 12 x 130	130
CS 12 x 140	140
CS 12 x 150	150
CS 12 x 160	160
CS 12 x 180	180
CS 12 x 200	200
CS 12 x 250	250



M	12
MC	13
MHC	19.25
MHD	12.5

T=16	T1=16	
T=20	T1=20	
T=26	T1=15	T2=23
T≥36	T1=22	T2=30

PT1	30 H7
PG1	36
VG1	6

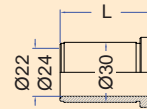
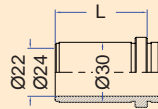
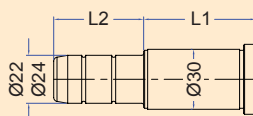
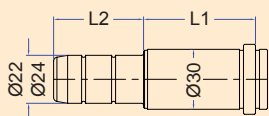


Download CAD data at
www.dms-diemould.co.uk
 enquiries to -
sales@dms-diemould.co.uk

Order Example
 Cavity Plate - Series - Thickness - Material
 A - 246 x 296 - 56 - 1730

●	Standard
◆	Available on request

246 x 296	X	X1	X2	X3	Y	Y1	Y2	Y3	Y4	Thickness (S)	1730	2311	2312	2085	2767
A	246	200	200		296	244	184			16 / 20 / 26 / 36 / 46 / 56 / 66 / 76 / 96	●	●	◆	◆	◆
B	246	200	200		296	244	184			16 / 20 / 26 / 36 / 46 / 56 / 66 / 76 / 96	●	●	◆	◆	◆
BP	246	200	200		296	244	184			36	●	◆		◆	
CPxF	246	200	200		296	244	184			26	●	◆		◆	
CPxH	296	200	200		296	244	184			26	●	◆		◆	
CPxHR	296	200	200		296	244	184			26	●	◆		◆	
CPxOSH	346	200	200		296	244	184			26	●	◆		◆	
CPxV	246	200	200		346	244	184			26	●	◆		◆	
CPxOSV	246	200	200		396	244	184			26	●	◆		◆	
ES	158			136	296			274	240	28 (12 + 16)	●			◆	
R	43	200	200		296	244	184			56 / 76 / 96	●			◆	

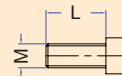
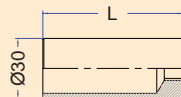


CODE	L1	L2
SGP 22 / 24 - 16 x 25	16	25
SGP 22 / 24 - 16 x 45		45
SGP 22 / 24 - 16 x 65		65
SGP 22 / 24 - 20 x 25	20	25
SGP 22 / 24 - 20 x 45		45
SGP 22 / 24 - 20 x 65		65
SGP 22 / 24 - 20 x 85		85
SGP 22 / 24 - 20 x 100		100
SGP 22 / 24 - 26 x 35	26	35
SGP 22 / 24 - 26 x 45		45
SGP 22 / 24 - 26 x 65		65
SGP 22 / 24 - 26 x 85		85
SGP 22 / 24 - 26 x 100		100
SGP 22 / 24 - 26 x 120		120
SGP 22 / 24 - 26 x 160		160
SGP 22 / 24 - 26 x 200		200
SGP 22 / 24 - 36 x 45	36	45
SGP 22 / 24 - 36 x 65		65
SGP 22 / 24 - 36 x 85		85
SGP 22 / 24 - 36 x 100		100
SGP 22 / 24 - 36 x 120		120
SGP 22 / 24 - 36 x 160		160
SGP 22 / 24 - 36 x 200		200
SGP 22 / 24 - 36 x 240		240
SGP 22 / 24 - 46 x 45	46	45
SGP 22 / 24 - 46 x 65		65
SGP 22 / 24 - 46 x 85		85
SGP 22 / 24 - 46 x 100		100
SGP 22 / 24 - 46 x 120		120
SGP 22 / 24 - 46 x 160		160
SGP 22 / 24 - 56 x 45	56	45
SGP 22 / 24 - 56 x 65		65
SGP 22 / 24 - 56 x 100		100
SGP 22 / 24 - 56 x 120		120
SGP 22 / 24 - 56 x 160		160
SGP 22 / 24 - 66 x 65	66	65
SGP 22 / 24 - 66 x 100		100
SGP 22 / 24 - 66 x 160		160
SGP 22 / 24 - 76 x 65	76	65
SGP 22 / 24 - 76 x 100		100
SGP 22 / 24 - 76 x 120		120
SGP 22 / 24 - 76 x 160		160
SGP 22 / 24 - 96 x 65	96	65
SGP 22 / 24 - 96 x 100		100
SGP 22 / 24 - 96 x 160		160
SGP 22 / 24 - 116 x 65	116	65
SGP 22 / 24 - 116 x 100		100
SGP 22 / 24 - 116 x 160		160

CODE	L1	L2
GP 22 / 24 - 16 x 25	16	25
GP 22 / 24 - 16 x 45		45
GP 22 / 24 - 16 x 65		65
GP 22 / 24 - 20 x 25	20	25
GP 22 / 24 - 20 x 45		45
GP 22 / 24 - 20 x 65		65
GP 22 / 24 - 20 x 85		85
GP 22 / 24 - 20 x 100		100
GP 22 / 24 - 26 x 35	26	35
GP 22 / 24 - 26 x 45		45
GP 22 / 24 - 26 x 65		65
GP 22 / 24 - 26 x 85		85
GP 22 / 24 - 26 x 100		100
GP 22 / 24 - 26 x 120		120
GP 22 / 24 - 26 x 160		160
GP 22 / 24 - 26 x 200		200
GP 22 / 24 - 36 x 45	36	45
GP 22 / 24 - 36 x 65		65
GP 22 / 24 - 36 x 85		85
GP 22 / 24 - 36 x 100		100
GP 22 / 24 - 36 x 120		120
GP 22 / 24 - 36 x 160		160
GP 22 / 24 - 36 x 200		200
GP 22 / 24 - 36 x 240		240
GP 22 / 24 - 46 x 45	46	45
GP 22 / 24 - 46 x 65		65
GP 22 / 24 - 46 x 85		85
GP 22 / 24 - 46 x 100		100
GP 22 / 24 - 46 x 120		120
GP 22 / 24 - 46 x 160		160
GP 22 / 24 - 56 x 45	56	45
GP 22 / 24 - 56 x 65		65
GP 22 / 24 - 56 x 100		100
GP 22 / 24 - 56 x 120		120
GP 22 / 24 - 56 x 160		160
GP 22 / 24 - 66 x 65	66	65
GP 22 / 24 - 66 x 100		100
GP 22 / 24 - 66 x 160		160
GP 22 / 24 - 76 x 65	76	65
GP 22 / 24 - 76 x 100		100
GP 22 / 24 - 76 x 120		120
GP 22 / 24 - 76 x 160		160
GP 22 / 24 - 96 x 65	96	65
GP 22 / 24 - 96 x 100		100
GP 22 / 24 - 96 x 160		160
GP 22 / 24 - 116 x 65	116	65
GP 22 / 24 - 116 x 100		100
GP 22 / 24 - 116 x 160		160

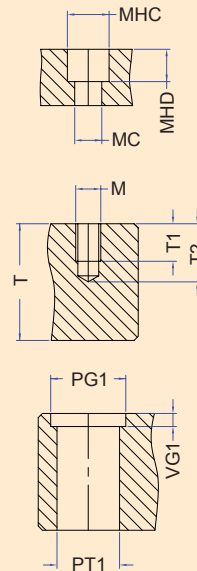
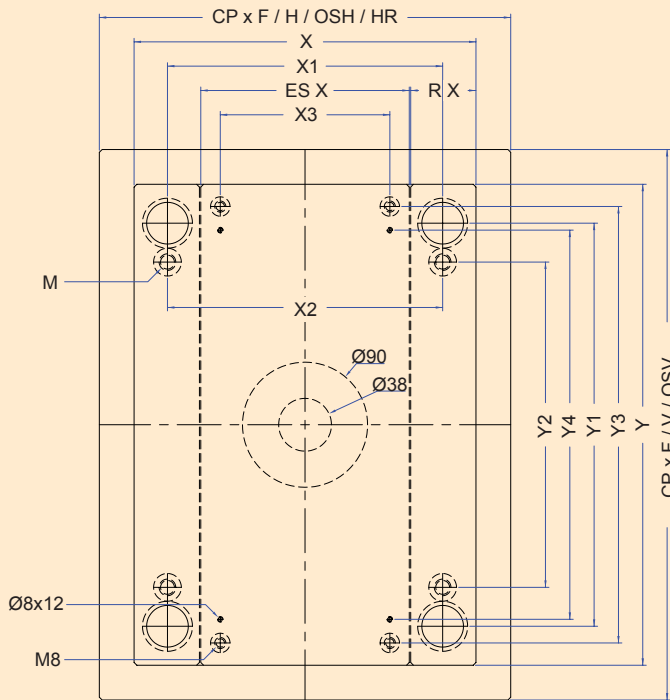
CODE	L
SGB 22 / 24 x 16	16
SGB 22 / 24 x 20	20
SGB 22 / 24 x 26	26
SGB 22 / 24 x 36	36
SGB 22 / 24 x 46	46
SGB 22 / 24 x 56	56
SGB 22 / 24 x 66	66
SGB 22 / 24 x 76	76
SGB 22 / 24 x 96	96
SGB 22 / 24 x 116	116

CODE	L
GB 22 / 24 x 16	16
GB 22 / 24 x 20	20
GB 22 / 24 x 26	26
GB 22 / 24 x 36	36
GB 22 / 24 x 46	46
GB 22 / 24 x 56	56
GB 22 / 24 x 66	66
GB 22 / 24 x 76	76
GB 22 / 24 x 96	96
GB 22 / 24 x 116	116



CODE	L
L 30 x 60	60
L 30 x 80	80
L 30 x 100	100
L 30 x 120	120
L 30 x 140	140

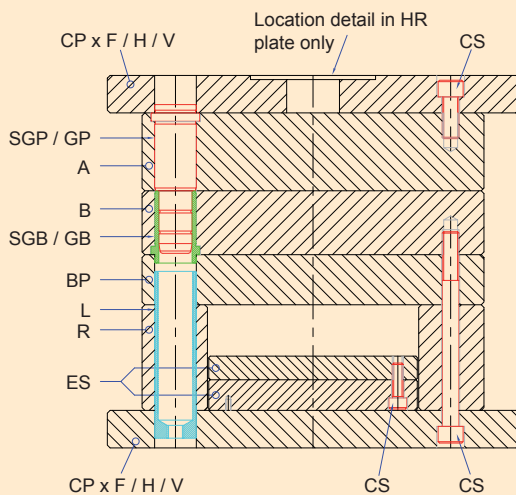
CODE	L
CS 12 x 20	20
CS 12 x 25	25
CS 12 x 30	30
CS 12 x 35	35
CS 12 x 40	40
CS 12 x 45	45
CS 12 x 50	50
CS 12 x 60	60
CS 12 x 70	70
CS 12 x 80	80
CS 12 x 90	90
CS 12 x 100	100
CS 12 x 110	110
CS 12 x 120	120
CS 12 x 130	130
CS 12 x 140	140
CS 12 x 150	150
CS 12 x 160	160
CS 12 x 180	180
CS 12 x 200	200
CS 12 x 250	250



M	12
MC	13
MHC	19.25
MHD	12.5

T=20	T1=20	
T=26	T1=15	T2=23
T≥36	T1=22	T2=30

PT1	30 H7
PG1	36
VG1	6

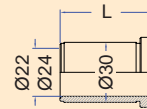
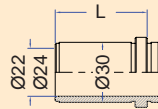
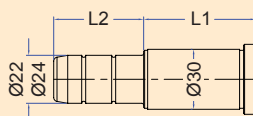
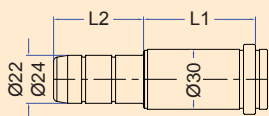


Download CAD data at
www.dms-diemould.co.uk
 enquiries to -
sales@dms-diemould.co.uk

Order Example
 Cavity Plate - Series - Thickness - Material
 A - 246 x 346 - 56 - 1730

●	Standard
◆	Available on request

246 x 346	X	X1	X2	X3	Y	Y1	Y2	Y3	Y4	Thickness (S)	1730	2311	2312	2085	2767
A	246	200	200		346	294	234			20 / 26 / 36 / 46 / 56 / 66 / 76 / 96	●	●	◆	◆	◆
B	246	200	200		346	294	234			20 / 26 / 36 / 46 / 56 / 66 / 76 / 96	●	●	◆	◆	◆
BP	246	200	200		346	294	234			36	●	◆		◆	
CPxF	246	200	200		346	294	234			26	●	◆		◆	
CPxH	296	200	200		346	294	234			26	●	◆		◆	
CPxHR	296	200	200		346	294	234			26	●	◆		◆	
CPxOSH	346	200	200		346	294	234			26	●	◆		◆	
CPxV	246	200	200		396	294	234			26	●	◆		◆	
CPxOSV	246	200	200		446	294	234			26	●	◆		◆	
ES	158			136	346			324	290	42 (16 + 26)	●			◆	
R	43	200	200		346	294	234			56 / 76 / 96	●			◆	

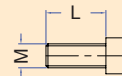
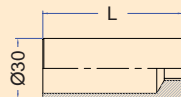


CODE	L1	L2
SGP 22 / 24 - 16 x 25	16	25
SGP 22 / 24 - 16 x 45		45
SGP 22 / 24 - 16 x 65		65
SGP 22 / 24 - 20 x 25	20	25
SGP 22 / 24 - 20 x 45		45
SGP 22 / 24 - 20 x 65		65
SGP 22 / 24 - 20 x 85		85
SGP 22 / 24 - 20 x 100		100
SGP 22 / 24 - 26 x 35	26	35
SGP 22 / 24 - 26 x 45		45
SGP 22 / 24 - 26 x 65		65
SGP 22 / 24 - 26 x 85		85
SGP 22 / 24 - 26 x 100		100
SGP 22 / 24 - 26 x 120		120
SGP 22 / 24 - 26 x 160		160
SGP 22 / 24 - 26 x 200		200
SGP 22 / 24 - 36 x 45	36	45
SGP 22 / 24 - 36 x 65		65
SGP 22 / 24 - 36 x 85		85
SGP 22 / 24 - 36 x 100		100
SGP 22 / 24 - 36 x 120		120
SGP 22 / 24 - 36 x 160		160
SGP 22 / 24 - 36 x 200		200
SGP 22 / 24 - 36 x 240		240
SGP 22 / 24 - 46 x 45	46	45
SGP 22 / 24 - 46 x 65		65
SGP 22 / 24 - 46 x 85		85
SGP 22 / 24 - 46 x 100		100
SGP 22 / 24 - 46 x 120		120
SGP 22 / 24 - 46 x 160		160
SGP 22 / 24 - 56 x 45	56	45
SGP 22 / 24 - 56 x 65		65
SGP 22 / 24 - 56 x 100		100
SGP 22 / 24 - 56 x 120		120
SGP 22 / 24 - 56 x 160		160
SGP 22 / 24 - 66 x 65	66	65
SGP 22 / 24 - 66 x 100		100
SGP 22 / 24 - 66 x 160		160
SGP 22 / 24 - 76 x 65	76	65
SGP 22 / 24 - 76 x 100		100
SGP 22 / 24 - 76 x 120		120
SGP 22 / 24 - 76 x 160		160
SGP 22 / 24 - 96 x 65	96	65
SGP 22 / 24 - 96 x 100		100
SGP 22 / 24 - 96 x 160		160
SGP 22 / 24 - 116 x 65	116	65
SGP 22 / 24 - 116 x 100		100
SGP 22 / 24 - 116 x 160		160

CODE	L1	L2
GP 22 / 24 - 16 x 25	16	25
GP 22 / 24 - 16 x 45		45
GP 22 / 24 - 16 x 65		65
GP 22 / 24 - 20 x 25	20	25
GP 22 / 24 - 20 x 45		45
GP 22 / 24 - 20 x 65		65
GP 22 / 24 - 20 x 85		85
GP 22 / 24 - 20 x 100		100
GP 22 / 24 - 26 x 35	26	35
GP 22 / 24 - 26 x 45		45
GP 22 / 24 - 26 x 65		65
GP 22 / 24 - 26 x 85		85
GP 22 / 24 - 26 x 100		100
GP 22 / 24 - 26 x 120		120
GP 22 / 24 - 26 x 160		160
GP 22 / 24 - 26 x 200		200
GP 22 / 24 - 36 x 45	36	45
GP 22 / 24 - 36 x 65		65
GP 22 / 24 - 36 x 85		85
GP 22 / 24 - 36 x 100		100
GP 22 / 24 - 36 x 120		120
GP 22 / 24 - 36 x 160		160
GP 22 / 24 - 36 x 200		200
GP 22 / 24 - 36 x 240		240
GP 22 / 24 - 46 x 45	46	45
GP 22 / 24 - 46 x 65		65
GP 22 / 24 - 46 x 85		85
GP 22 / 24 - 46 x 100		100
GP 22 / 24 - 46 x 120		120
GP 22 / 24 - 46 x 160		160
GP 22 / 24 - 56 x 45	56	45
GP 22 / 24 - 56 x 65		65
GP 22 / 24 - 56 x 100		100
GP 22 / 24 - 56 x 120		120
GP 22 / 24 - 56 x 160		160
GP 22 / 24 - 66 x 65	66	65
GP 22 / 24 - 66 x 100		100
GP 22 / 24 - 66 x 160		160
GP 22 / 24 - 76 x 65	76	65
GP 22 / 24 - 76 x 100		100
GP 22 / 24 - 76 x 120		120
GP 22 / 24 - 76 x 160		160
GP 22 / 24 - 96 x 65	96	65
GP 22 / 24 - 96 x 100		100
GP 22 / 24 - 96 x 160		160
GP 22 / 24 - 116 x 65	116	65
GP 22 / 24 - 116 x 100		100
GP 22 / 24 - 116 x 160		160

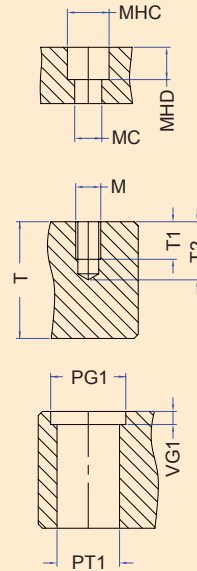
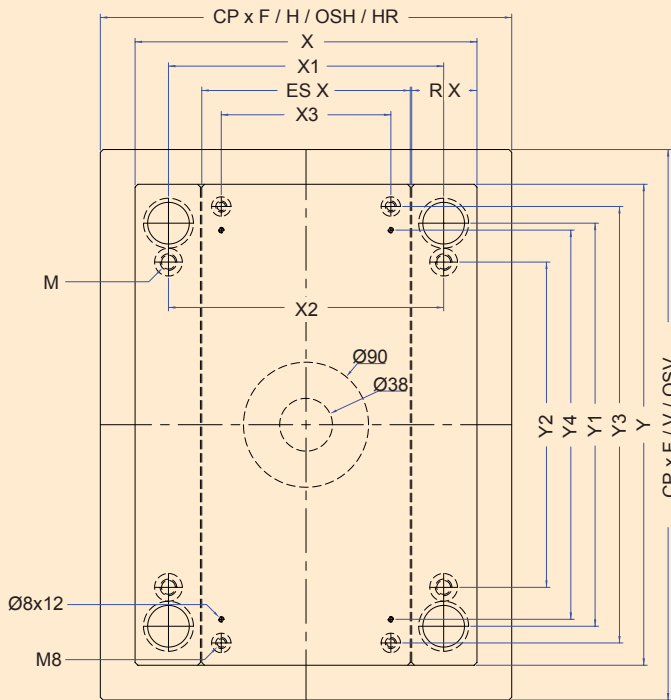
CODE	L
SGB 22 / 24 x 16	16
SGB 22 / 24 x 20	20
SGB 22 / 24 x 26	26
SGB 22 / 24 x 36	36
SGB 22 / 24 x 46	46
SGB 22 / 24 x 56	56
SGB 22 / 24 x 66	66
SGB 22 / 24 x 76	76
SGB 22 / 24 x 96	96
SGB 22 / 24 x 116	116

CODE	L
GB 22 / 24 x 16	16
GB 22 / 24 x 20	20
GB 22 / 24 x 26	26
GB 22 / 24 x 36	36
GB 22 / 24 x 46	46
GB 22 / 24 x 56	56
GB 22 / 24 x 66	66
GB 22 / 24 x 76	76
GB 22 / 24 x 96	96
GB 22 / 24 x 116	116



CODE	L
L 30 x 60	60
L 30 x 80	80
L 30 x 100	100
L 30 x 120	120
L 30 x 140	140

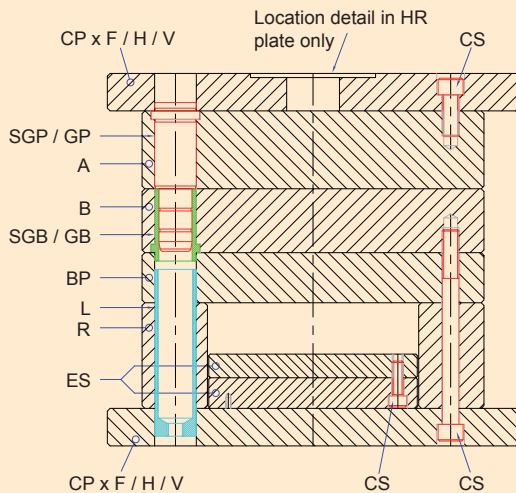
CODE	L
CS 12 x 20	20
CS 12 x 25	25
CS 12 x 30	30
CS 12 x 35	35
CS 12 x 40	40
CS 12 x 45	45
CS 12 x 50	50
CS 12 x 60	60
CS 12 x 70	70
CS 12 x 80	80
CS 12 x 90	90
CS 12 x 100	100
CS 12 x 110	110
CS 12 x 120	120
CS 12 x 130	130
CS 12 x 140	140
CS 12 x 150	150
CS 12 x 160	160
CS 12 x 180	180
CS 12 x 200	200
CS 12 x 250	250



M	12
MC	13
MHC	19.25
MHD	12.5

T=26	T1=15	T2=23
T≥36	T1=22	T2=30

PT1	30 H7
PG1	36
VG1	6

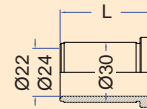
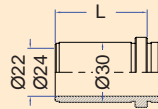
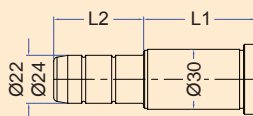
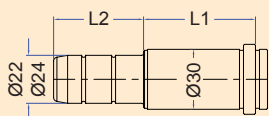


Download CAD data at
www.dms-diemould.co.uk
 enquiries to -
sales@dms-diemould.co.uk

Order Example
 Cavity Plate - Series - Thickness - Material
 A - 246 x 396 - 56 - 1730

●	Standard
◆	Available on request

246 x 396	X	X1	X2	X3	Y	Y1	Y2	Y3	Y4	Thickness (S)	1730	2311	2312	2085	2767
A	246	200	200		396	344	284			26 / 36 / 46 / 56 / 66 / 76 / 96	●	●	◆	◆	◆
B	246	200	200		396	344	284			26 / 36 / 46 / 56 / 66 / 76 / 96	●	●	◆	◆	◆
BP	246	200	200		396	344	284			36	●	◆		◆	
CPxF	246	200	200		396	344	284			26	●	◆		◆	
CPxH	296	200	200		396	344	284			26	●	◆		◆	
CPxHR	296	200	200		396	344	284			26	●	◆		◆	
CPxOSH	346	200	200		396	344	284			26	●	◆		◆	
CPxV	246	200	200		446	344	284			26	●	◆		◆	
CPxOSV	246	200	200		496	344	284			26	●	◆		◆	
ES	158			136	396			374	340	42 (16 + 26)	●			◆	
R	43	200	200		396	344	284			56 / 76 / 96	●			◆	

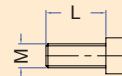
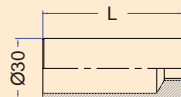


CODE	L1	L2
SGP 22 / 24 - 16 x 25	16	25
SGP 22 / 24 - 16 x 45		45
SGP 22 / 24 - 16 x 65		65
SGP 22 / 24 - 20 x 25	20	25
SGP 22 / 24 - 20 x 45		45
SGP 22 / 24 - 20 x 65		65
SGP 22 / 24 - 20 x 85		85
SGP 22 / 24 - 20 x 100		100
SGP 22 / 24 - 26 x 35	26	35
SGP 22 / 24 - 26 x 45		45
SGP 22 / 24 - 26 x 65		65
SGP 22 / 24 - 26 x 85		85
SGP 22 / 24 - 26 x 100		100
SGP 22 / 24 - 26 x 120		120
SGP 22 / 24 - 26 x 160		160
SGP 22 / 24 - 26 x 200		200
SGP 22 / 24 - 36 x 45	36	45
SGP 22 / 24 - 36 x 65		65
SGP 22 / 24 - 36 x 85		85
SGP 22 / 24 - 36 x 100		100
SGP 22 / 24 - 36 x 120		120
SGP 22 / 24 - 36 x 160		160
SGP 22 / 24 - 36 x 200		200
SGP 22 / 24 - 36 x 240		240
SGP 22 / 24 - 46 x 45	46	45
SGP 22 / 24 - 46 x 65		65
SGP 22 / 24 - 46 x 85		85
SGP 22 / 24 - 46 x 100		100
SGP 22 / 24 - 46 x 120		120
SGP 22 / 24 - 46 x 160		160
SGP 22 / 24 - 56 x 45	56	45
SGP 22 / 24 - 56 x 65		65
SGP 22 / 24 - 56 x 100		100
SGP 22 / 24 - 56 x 120		120
SGP 22 / 24 - 56 x 160		160
SGP 22 / 24 - 66 x 65	66	65
SGP 22 / 24 - 66 x 100		100
SGP 22 / 24 - 66 x 160		160
SGP 22 / 24 - 76 x 65	76	65
SGP 22 / 24 - 76 x 100		100
SGP 22 / 24 - 76 x 120		120
SGP 22 / 24 - 76 x 160		160
SGP 22 / 24 - 96 x 65	96	65
SGP 22 / 24 - 96 x 100		100
SGP 22 / 24 - 96 x 160		160
SGP 22 / 24 - 116 x 65	116	65
SGP 22 / 24 - 116 x 100		100
SGP 22 / 24 - 116 x 160		160

CODE	L1	L2
GP 22 / 24 - 16 x 25	16	25
GP 22 / 24 - 16 x 45		45
GP 22 / 24 - 16 x 65		65
GP 22 / 24 - 20 x 25	20	25
GP 22 / 24 - 20 x 45		45
GP 22 / 24 - 20 x 65		65
GP 22 / 24 - 20 x 85		85
GP 22 / 24 - 20 x 100		100
GP 22 / 24 - 26 x 35	26	35
GP 22 / 24 - 26 x 45		45
GP 22 / 24 - 26 x 65		65
GP 22 / 24 - 26 x 85		85
GP 22 / 24 - 26 x 100		100
GP 22 / 24 - 26 x 120		120
GP 22 / 24 - 26 x 160		160
GP 22 / 24 - 26 x 200		200
GP 22 / 24 - 36 x 45	36	45
GP 22 / 24 - 36 x 65		65
GP 22 / 24 - 36 x 85		85
GP 22 / 24 - 36 x 100		100
GP 22 / 24 - 36 x 120		120
GP 22 / 24 - 36 x 160		160
GP 22 / 24 - 36 x 200		200
GP 22 / 24 - 36 x 240		240
GP 22 / 24 - 46 x 45	46	45
GP 22 / 24 - 46 x 65		65
GP 22 / 24 - 46 x 85		85
GP 22 / 24 - 46 x 100		100
GP 22 / 24 - 46 x 120		120
GP 22 / 24 - 46 x 160		160
GP 22 / 24 - 56 x 45	56	45
GP 22 / 24 - 56 x 65		65
GP 22 / 24 - 56 x 100		100
GP 22 / 24 - 56 x 120		120
GP 22 / 24 - 56 x 160		160
GP 22 / 24 - 66 x 65	66	65
GP 22 / 24 - 66 x 100		100
GP 22 / 24 - 66 x 160		160
GP 22 / 24 - 76 x 65	76	65
GP 22 / 24 - 76 x 100		100
GP 22 / 24 - 76 x 120		120
GP 22 / 24 - 76 x 160		160
GP 22 / 24 - 96 x 65	96	65
GP 22 / 24 - 96 x 100		100
GP 22 / 24 - 96 x 160		160
GP 22 / 24 - 116 x 65	116	65
GP 22 / 24 - 116 x 100		100
GP 22 / 24 - 116 x 160		160

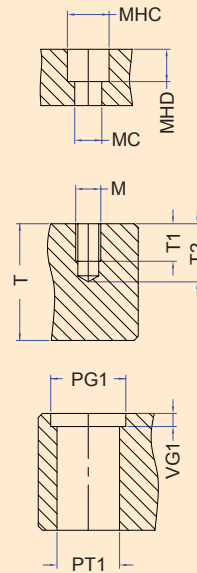
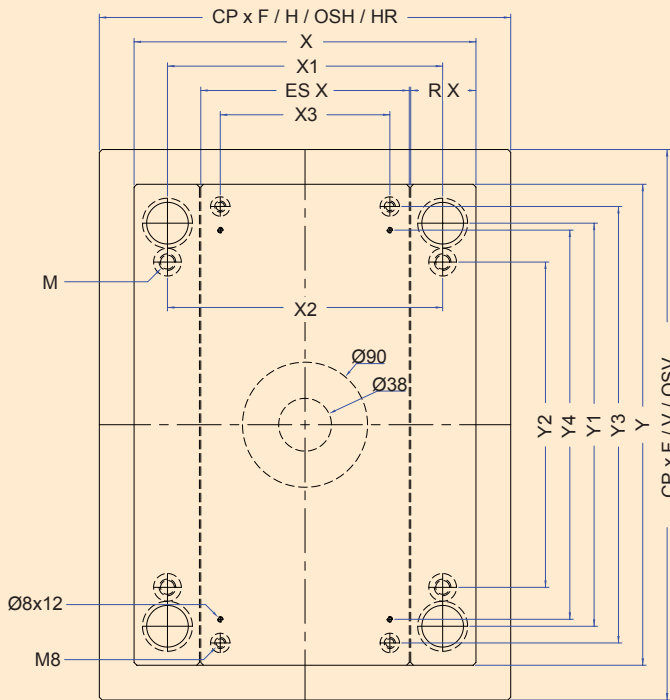
CODE	L
SGB 22 / 24 x 16	16
SGB 22 / 24 x 20	20
SGB 22 / 24 x 26	26
SGB 22 / 24 x 36	36
SGB 22 / 24 x 46	46
SGB 22 / 24 x 56	56
SGB 22 / 24 x 66	66
SGB 22 / 24 x 76	76
SGB 22 / 24 x 96	96
SGB 22 / 24 x 116	116

CODE	L
GB 22 / 24 x 16	16
GB 22 / 24 x 20	20
GB 22 / 24 x 26	26
GB 22 / 24 x 36	36
GB 22 / 24 x 46	46
GB 22 / 24 x 56	56
GB 22 / 24 x 66	66
GB 22 / 24 x 76	76
GB 22 / 24 x 96	96
GB 22 / 24 x 116	116



CODE	L
L 30 x 60	60
L 30 x 80	80
L 30 x 100	100
L 30 x 120	120
L 30 x 140	140

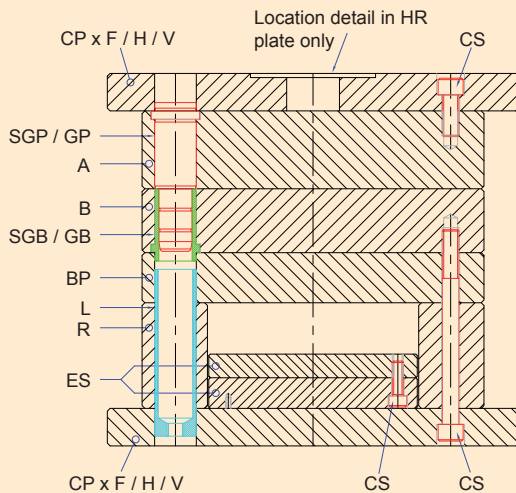
CODE	L
CS 12 x 20	20
CS 12 x 25	25
CS 12 x 30	30
CS 12 x 35	35
CS 12 x 40	40
CS 12 x 45	45
CS 12 x 50	50
CS 12 x 60	60
CS 12 x 70	70
CS 12 x 80	80
CS 12 x 90	90
CS 12 x 100	100
CS 12 x 110	110
CS 12 x 120	120
CS 12 x 130	130
CS 12 x 140	140
CS 12 x 150	150
CS 12 x 160	160
CS 12 x 180	180
CS 12 x 200	200
CS 12 x 250	250



M	12
MC	13
MHC	19.25
MHD	12.5

T=26	T1=15	T2=23
T≥36	T1=22	T2=30

PT1	30 H7
PG1	36
VG1	6

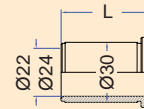
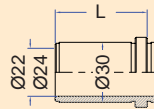
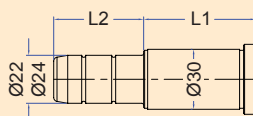
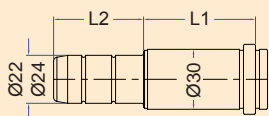


Download CAD data at www.dms-diemould.co.uk
enquiries to - sales@dms-diemould.co.uk

Order Example
Cavity Plate - Series - Thickness - Material
A - 246 x 446 - 56 - 1730

●	Standard
◆	Available on request

246 x 446	X	X1	X2	X3	Y	Y1	Y2	Y3	Y4	Thickness (S)	1730	2311	2312	2085	2767
A	246	200	200		446	394	334			26 / 36 / 46 / 56 / 66 / 76 / 96	●	●	◆	◆	◆
B	246	200	200		446	394	334			26 / 36 / 46 / 56 / 66 / 76 / 96	●	●	◆	◆	◆
BP	246	200	200		446	394	334			36	●	◆		◆	
CPxF	246	200	200		446	394	334			26	●	◆		◆	
CPxH	296	200	200		446	394	334			26	●	◆		◆	
CPxHR	296	200	200		446	394	334			26	●	◆		◆	
CPxOSH	346	200	200		446	394	334			26	●	◆		◆	
CPxV	246	200	200		496	394	334			26	●	◆		◆	
CPxOSV	246	200	200		546	394	334			26	●	◆		◆	
ES	158			136	446			424	390	42 (16 + 26)	●			◆	
R	43	200	200		446	394	334			56 / 76 / 96	●			◆	

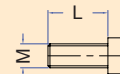
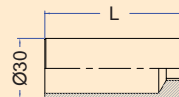


CODE	L1	L2
SGP 22 / 24 - 16 x 25	16	25
SGP 22 / 24 - 16 x 45		45
SGP 22 / 24 - 16 x 65		65
SGP 22 / 24 - 20 x 25	20	25
SGP 22 / 24 - 20 x 45		45
SGP 22 / 24 - 20 x 65		65
SGP 22 / 24 - 20 x 85		85
SGP 22 / 24 - 20 x 100		100
SGP 22 / 24 - 26 x 35	26	35
SGP 22 / 24 - 26 x 45		45
SGP 22 / 24 - 26 x 65		65
SGP 22 / 24 - 26 x 85		85
SGP 22 / 24 - 26 x 100		100
SGP 22 / 24 - 26 x 120		120
SGP 22 / 24 - 26 x 160		160
SGP 22 / 24 - 26 x 200		200
SGP 22 / 24 - 36 x 45	36	45
SGP 22 / 24 - 36 x 65		65
SGP 22 / 24 - 36 x 85		85
SGP 22 / 24 - 36 x 100		100
SGP 22 / 24 - 36 x 120		120
SGP 22 / 24 - 36 x 160		160
SGP 22 / 24 - 36 x 200		200
SGP 22 / 24 - 36 x 240		240
SGP 22 / 24 - 46 x 45	46	45
SGP 22 / 24 - 46 x 65		65
SGP 22 / 24 - 46 x 85		85
SGP 22 / 24 - 46 x 100		100
SGP 22 / 24 - 46 x 120		120
SGP 22 / 24 - 46 x 160		160
SGP 22 / 24 - 56 x 45	56	45
SGP 22 / 24 - 56 x 65		65
SGP 22 / 24 - 56 x 100		100
SGP 22 / 24 - 56 x 120		120
SGP 22 / 24 - 56 x 160		160
SGP 22 / 24 - 66 x 65	66	65
SGP 22 / 24 - 66 x 100		100
SGP 22 / 24 - 66 x 160		160
SGP 22 / 24 - 76 x 65	76	65
SGP 22 / 24 - 76 x 100		100
SGP 22 / 24 - 76 x 120		120
SGP 22 / 24 - 76 x 160		160
SGP 22 / 24 - 96 x 65	96	65
SGP 22 / 24 - 96 x 100		100
SGP 22 / 24 - 96 x 160		160
SGP 22 / 24 - 116 x 65	116	65
SGP 22 / 24 - 116 x 100		100
SGP 22 / 24 - 116 x 160		160

CODE	L1	L2
GP 22 / 24 - 16 x 25	16	25
GP 22 / 24 - 16 x 45		45
GP 22 / 24 - 16 x 65		65
GP 22 / 24 - 20 x 25	20	25
GP 22 / 24 - 20 x 45		45
GP 22 / 24 - 20 x 65		65
GP 22 / 24 - 20 x 85		85
GP 22 / 24 - 20 x 100		100
GP 22 / 24 - 26 x 35	26	35
GP 22 / 24 - 26 x 45		45
GP 22 / 24 - 26 x 65		65
GP 22 / 24 - 26 x 85		85
GP 22 / 24 - 26 x 100		100
GP 22 / 24 - 26 x 120		120
GP 22 / 24 - 26 x 160		160
GP 22 / 24 - 26 x 200		200
GP 22 / 24 - 36 x 45	36	45
GP 22 / 24 - 36 x 65		65
GP 22 / 24 - 36 x 85		85
GP 22 / 24 - 36 x 100		100
GP 22 / 24 - 36 x 120		120
GP 22 / 24 - 36 x 160		160
GP 22 / 24 - 36 x 200		200
GP 22 / 24 - 36 x 240		240
GP 22 / 24 - 46 x 45	46	45
GP 22 / 24 - 46 x 65		65
GP 22 / 24 - 46 x 85		85
GP 22 / 24 - 46 x 100		100
GP 22 / 24 - 46 x 120		120
GP 22 / 24 - 46 x 160		160
GP 22 / 24 - 56 x 45	56	45
GP 22 / 24 - 56 x 65		65
GP 22 / 24 - 56 x 100		100
GP 22 / 24 - 56 x 120		120
GP 22 / 24 - 56 x 160		160
GP 22 / 24 - 66 x 65	66	65
GP 22 / 24 - 66 x 100		100
GP 22 / 24 - 66 x 160		160
GP 22 / 24 - 76 x 65	76	65
GP 22 / 24 - 76 x 100		100
GP 22 / 24 - 76 x 120		120
GP 22 / 24 - 76 x 160		160
GP 22 / 24 - 96 x 65	96	65
GP 22 / 24 - 96 x 100		100
GP 22 / 24 - 96 x 160		160
GP 22 / 24 - 116 x 65	116	65
GP 22 / 24 - 116 x 100		100
GP 22 / 24 - 116 x 160		160

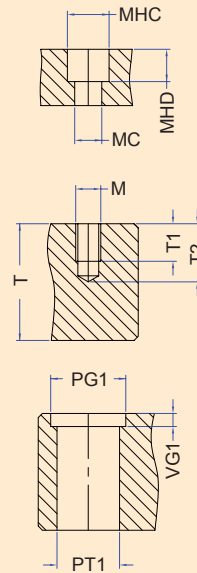
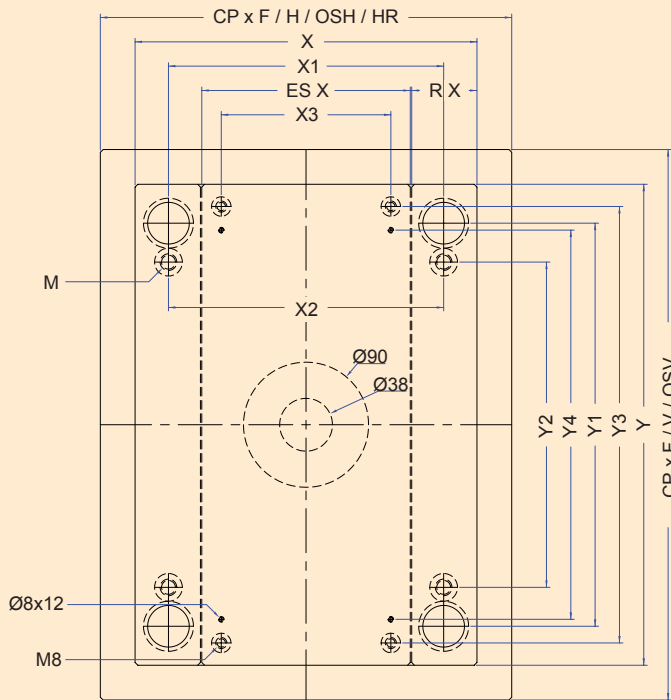
CODE	L
SGB 22 / 24 x 16	16
SGB 22 / 24 x 20	20
SGB 22 / 24 x 26	26
SGB 22 / 24 x 36	36
SGB 22 / 24 x 46	46
SGB 22 / 24 x 56	56
SGB 22 / 24 x 66	66
SGB 22 / 24 x 76	76
SGB 22 / 24 x 96	96
SGB 22 / 24 x 116	116

CODE	L
GB 22 / 24 x 16	16
GB 22 / 24 x 20	20
GB 22 / 24 x 26	26
GB 22 / 24 x 36	36
GB 22 / 24 x 46	46
GB 22 / 24 x 56	56
GB 22 / 24 x 66	66
GB 22 / 24 x 76	76
GB 22 / 24 x 96	96
GB 22 / 24 x 116	116



CODE	L
L 30 x 60	60
L 30 x 80	80
L 30 x 100	100
L 30 x 120	120
L 30 x 140	140

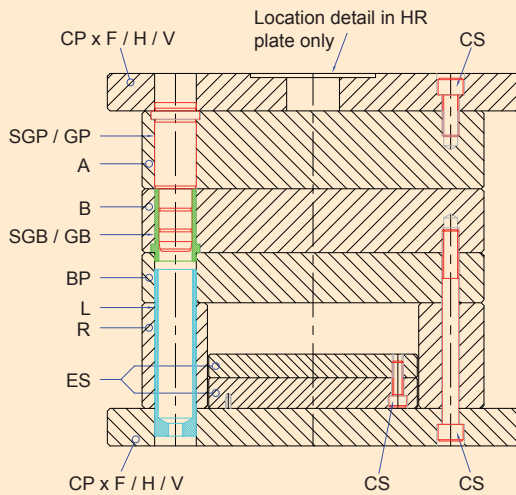
CODE	L
CS 12 x 20	20
CS 12 x 25	25
CS 12 x 30	30
CS 12 x 35	35
CS 12 x 40	40
CS 12 x 45	45
CS 12 x 50	50
CS 12 x 60	60
CS 12 x 70	70
CS 12 x 80	80
CS 12 x 90	90
CS 12 x 100	100
CS 12 x 110	110
CS 12 x 120	120
CS 12 x 130	130
CS 12 x 140	140
CS 12 x 150	150
CS 12 x 160	160
CS 12 x 180	180
CS 12 x 200	200
CS 12 x 250	250



M	12
MC	13
MHC	19.25
MHD	12.5

T=26	T1=15	T2=23
T≥36	T1=22	T2=30

PT1	30 H7
PG1	36
VG1	6

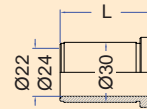
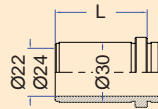
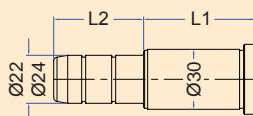
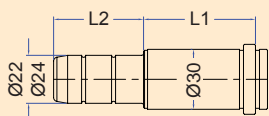


Download CAD data at www.dms-diemould.co.uk
enquiries to - sales@dms-diemould.co.uk

Order Example
Cavity Plate - Series - Thickness - Material
A - 246 x 496 - 56 - 1730

●	Standard
◆	Available on request

246 x 496	X	X1	X2	X3	Y	Y1	Y2	Y3	Y4	Thickness (S)	1730	2311	2312	2085	2767
A	246	200	200		496	444	384			26 / 36 / 46 / 56 / 66 / 76 / 96 / 116	●	●	◆	◆	◆
B	246	200	200		496	444	384			26 / 36 / 46 / 56 / 66 / 76 / 96 / 116	●	●	◆	◆	◆
BP	246	200	200		496	444	384			36	●	◆		◆	
CPxF	246	200	200		496	444	384			26	●	◆		◆	
CPxH	296	200	200		496	444	384			26	●	◆		◆	
CPxHR	296	200	200		496	444	384			26	●	◆		◆	
CPxOSH	346	200	200		496	444	384			26	●	◆		◆	
CPxV	246	200	200		546	444	384			26	●	◆		◆	
CPxOSV	246	200	200		596	444	384			26	●	◆		◆	
ES	158			136	496			474	440	42 (16 + 26)	●			◆	
R	43	200	200		496	444	384			56 / 76 / 96	●			◆	

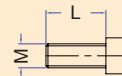
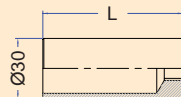


CODE	L1	L2
SGP 22 / 24 - 16 x 25	16	25
SGP 22 / 24 - 16 x 45		45
SGP 22 / 24 - 16 x 65		65
SGP 22 / 24 - 20 x 25	20	25
SGP 22 / 24 - 20 x 45		45
SGP 22 / 24 - 20 x 65		65
SGP 22 / 24 - 20 x 85		85
SGP 22 / 24 - 20 x 100		100
SGP 22 / 24 - 26 x 35	26	35
SGP 22 / 24 - 26 x 45		45
SGP 22 / 24 - 26 x 65		65
SGP 22 / 24 - 26 x 85		85
SGP 22 / 24 - 26 x 100		100
SGP 22 / 24 - 26 x 120		120
SGP 22 / 24 - 26 x 160		160
SGP 22 / 24 - 26 x 200		200
SGP 22 / 24 - 36 x 45	36	45
SGP 22 / 24 - 36 x 65		65
SGP 22 / 24 - 36 x 85		85
SGP 22 / 24 - 36 x 100		100
SGP 22 / 24 - 36 x 120		120
SGP 22 / 24 - 36 x 160		160
SGP 22 / 24 - 36 x 200		200
SGP 22 / 24 - 36 x 240		240
SGP 22 / 24 - 46 x 45	46	45
SGP 22 / 24 - 46 x 65		65
SGP 22 / 24 - 46 x 85		85
SGP 22 / 24 - 46 x 100		100
SGP 22 / 24 - 46 x 120		120
SGP 22 / 24 - 46 x 160		160
SGP 22 / 24 - 56 x 45	56	45
SGP 22 / 24 - 56 x 65		65
SGP 22 / 24 - 56 x 100		100
SGP 22 / 24 - 56 x 120		120
SGP 22 / 24 - 56 x 160		160
SGP 22 / 24 - 66 x 65	66	65
SGP 22 / 24 - 66 x 100		100
SGP 22 / 24 - 66 x 160		160
SGP 22 / 24 - 76 x 65	76	65
SGP 22 / 24 - 76 x 100		100
SGP 22 / 24 - 76 x 120		120
SGP 22 / 24 - 76 x 160		160
SGP 22 / 24 - 96 x 65	96	65
SGP 22 / 24 - 96 x 100		100
SGP 22 / 24 - 96 x 160		160
SGP 22 / 24 - 116 x 65	116	65
SGP 22 / 24 - 116 x 100		100
SGP 22 / 24 - 116 x 160		160

CODE	L1	L2
GP 22 / 24 - 16 x 25	16	25
GP 22 / 24 - 16 x 45		45
GP 22 / 24 - 16 x 65		65
GP 22 / 24 - 20 x 25	20	25
GP 22 / 24 - 20 x 45		45
GP 22 / 24 - 20 x 65		65
GP 22 / 24 - 20 x 85		85
GP 22 / 24 - 20 x 100		100
GP 22 / 24 - 26 x 35	26	35
GP 22 / 24 - 26 x 45		45
GP 22 / 24 - 26 x 65		65
GP 22 / 24 - 26 x 85		85
GP 22 / 24 - 26 x 100		100
GP 22 / 24 - 26 x 120		120
GP 22 / 24 - 26 x 160		160
GP 22 / 24 - 26 x 200		200
GP 22 / 24 - 36 x 45	36	45
GP 22 / 24 - 36 x 65		65
GP 22 / 24 - 36 x 85		85
GP 22 / 24 - 36 x 100		100
GP 22 / 24 - 36 x 120		120
GP 22 / 24 - 36 x 160		160
GP 22 / 24 - 36 x 200		200
GP 22 / 24 - 36 x 240		240
GP 22 / 24 - 46 x 45	46	45
GP 22 / 24 - 46 x 65		65
GP 22 / 24 - 46 x 85		85
GP 22 / 24 - 46 x 100		100
GP 22 / 24 - 46 x 120		120
GP 22 / 24 - 46 x 160		160
GP 22 / 24 - 56 x 45	56	45
GP 22 / 24 - 56 x 65		65
GP 22 / 24 - 56 x 100		100
GP 22 / 24 - 56 x 120		120
GP 22 / 24 - 56 x 160		160
GP 22 / 24 - 66 x 65	66	65
GP 22 / 24 - 66 x 100		100
GP 22 / 24 - 66 x 160		160
GP 22 / 24 - 76 x 65	76	65
GP 22 / 24 - 76 x 100		100
GP 22 / 24 - 76 x 120		120
GP 22 / 24 - 76 x 160		160
GP 22 / 24 - 96 x 65	96	65
GP 22 / 24 - 96 x 100		100
GP 22 / 24 - 96 x 160		160
GP 22 / 24 - 116 x 65	116	65
GP 22 / 24 - 116 x 100		100
GP 22 / 24 - 116 x 160		160

CODE	L
SGB 22 / 24 x 16	16
SGB 22 / 24 x 20	20
SGB 22 / 24 x 26	26
SGB 22 / 24 x 36	36
SGB 22 / 24 x 46	46
SGB 22 / 24 x 56	56
SGB 22 / 24 x 66	66
SGB 22 / 24 x 76	76
SGB 22 / 24 x 96	96
SGB 22 / 24 x 116	116

CODE	L
GB 22 / 24 x 16	16
GB 22 / 24 x 20	20
GB 22 / 24 x 26	26
GB 22 / 24 x 36	36
GB 22 / 24 x 46	46
GB 22 / 24 x 56	56
GB 22 / 24 x 66	66
GB 22 / 24 x 76	76
GB 22 / 24 x 96	96
GB 22 / 24 x 116	116



CODE	L
L 30 x 60	60
L 30 x 80	80
L 30 x 100	100
L 30 x 120	120
L 30 x 140	140

CODE	L
CS 12 x 20	20
CS 12 x 25	25
CS 12 x 30	30
CS 12 x 35	35
CS 12 x 40	40
CS 12 x 45	45
CS 12 x 50	50
CS 12 x 60	60
CS 12 x 70	70
CS 12 x 80	80
CS 12 x 90	90
CS 12 x 100	100
CS 12 x 110	110
CS 12 x 120	120
CS 12 x 130	130
CS 12 x 140	140
CS 12 x 150	150
CS 12 x 160	160
CS 12 x 180	180
CS 12 x 200	200
CS 12 x 250	250



TERMS AND CONDITIONS OF SALE

1) CUSTOMER CONDITIONS DO NOT APPLY.

All quotations are made and all orders are accepted subject to the following conditions. All other terms, conditions or warranties whatsoever are excluded from the contract or any variation thereof unless expressly accepted by a Director of the Supplier in writing.

2) DELIVERY.

Every effort will be made to keep delivery dates. Time for delivery is given as accurately as possible but it is not guaranteed nor is it the essence of the contract. The customer has no right to damages or to cancel the order for failure for any cause to meet any delivery time stated.

3) LIABILITY.

No liability can be accepted for loss caused through delay for reasons beyond our control or by an industrial dispute of any kind (whether involving our employees or not) or by any failure to obtain materials, goods or equipment from a supplier through no fault of our own in due time to observe delivery dates. The supplier's right is reserved to repudiate the contract and/or suspend delivery as long as any payment for goods previously invoiced is in arrears without liability for damage or consequential loss and without prejudice to the Suppliers right to recover all sums owing to it.

4) PRICES.

The prices quoted are subject to fluctuation without prior notice. Goods will be invoiced at prices ruling at the date of despatch notwithstanding any quotation or prior acceptance of order. All prices are unless otherwise stated net exclusive VAT and carriage charges. Post or Carriage and packing will be payable by the Customer in addition to the price of the goods.

5) EXPORT.

These goods are offered on the understanding that they will not be exported from the United Kingdom for resale.

6) PAYMENT.

Payment is due 30 days after the date of the invoice. No disputes arising under the contract nor delays beyond the reasonable control of the Supplier shall interfere with the prompt payment in full by the Customer.

7) INTEREST.

The Company reserves the right to charge interest at 2% per month on overdue accounts.

8) COLLECTION COSTS.

Should it be necessary for the Company to instruct a third party e.g. Solicitor or Collection Agency to collect any outstanding balance on behalf of the Company, then the following Administration Charges will be payable:

On outstanding balance up to £5,000 – 5% of the debt.

Outstanding balance over £5,000 – 3%.

These charges are in addition to any Court and Solicitors fees which may be payable.

9) MINIMUM ORDER VALUE. £15.00.

10) RETURN OF GOODS.

Goods must not be returned to us for credit without obtaining our authorisation in writing. A handling charge of 10% of the purchase price will be made and we reserve the right to charge the Customer additionally for all reasonable costs and expenses incurred by the Supplier in respect of returns.

11) PACKING.

Unless stated otherwise, the Customer shall be charged for packing cases, these being non-returnable. Packing shall provide adequate protection throughout normal conditions of transit of normal duration. Packing is not suitable for long-term storage. Special requirements for packing must be stated on the order and will be chargeable.

12) LAW.

The contract shall be governed and interpreted exclusively according to the law of England and shall be subject to the jurisdiction of the English courts only.

13) TITLE AND RISK.

Title to the goods shall only pass to the Customer when the Customer has paid to the Supplier all the sums due and payable by the Customer under the contract and all other prior agreements between the supplier and the Customer. If the Customer fails to pay such sums the Supplier shall be entitled to repossess the goods of which title has not passed to the Customer. The Customer hereby licenses the Supplier, its officers, employees and agents to enter the premises of the Customer for the purpose of either satisfying itself that the goods are kept separately from other goods or to repossess the goods. Until title of the goods has passed to the Customer pursuant to the terms hereof, it shall possess the goods as a bailee of the supplier on the terms of this contract. Risk shall pass to the Customer so that the Customer is responsible for all loss, damage or deterioration to the goods at the time the goods arrive at the place of delivery if the Supplier delivers the goods by its own transport or if the Supplier arranges transport of the goods. In all other circumstances risk shall pass to the Customer at the time the goods leave the premises of the Supplier.

14) CONSUMER PROTECTION ACT.

In circumstances where the Supplier supplies parts or products to the Customer for incorporation with, or use ancillary to, and composite products to be produced, manufactured, processed or supplied by Customers then:- The Customer shall forthwith on demand produce for inspection by the Supplier copies of all written instructions, information and warnings to be supplied by the Customer in relation to the said composite products, provided nevertheless that such inspection or right to inspect shall not in itself constitute acceptance or approval on the part of the Supplier of such instructions, information or warnings. The Customer shall indemnify, reimburse and compensate the Supplier for all losses and damages (including costs, expenses and charges for legal actions in which the Supplier may be involved) that the Supplier may incur in the event that any claim or claims are made against the Company pursuant to the Act relating to the said composite products of the Customer or products in circumstances of which part of the product supplied by the supplier was either (i) not the defective part of the said composite product or (ii) was only rendered the defective part or became a defective product by reason of instructions or warnings given by the Customer or other supplier of the said composite product or products. For the purpose of this condition the word "defective" shall be interpreted in accordance with the definition contained in the Act.

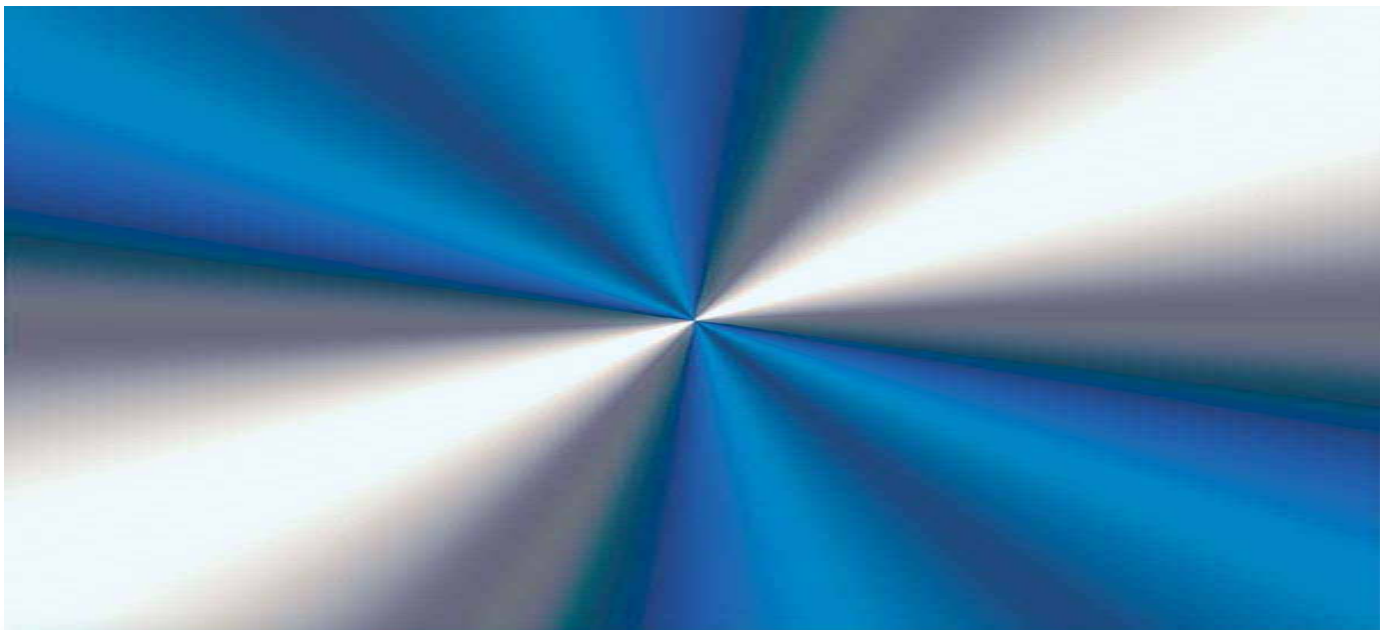
15) INDEMNITY FOR PERSONAL INJURY.

Save where the Supplier is shown to have failed to exercise reasonable care in the manufacture and/or supply of the goods and such failure results in the death or personal injury the Supplier shall not be liable in respect of claims arising by reason of death or personal injury. Further, under no circumstances whatsoever shall the Supplier be liable for consequential loss (including the removal or rectification work required in connection with the installation of repaired or substituted goods), loss of profits, damage to property, waste, expenditure or cost of mitigation.

16) HEALTH & SAFETY AT WORK.

Whilst every reasonable care is taken to ensure that our products are safe, you are requested to pay particular attention to applying the proper health and safety precautions in the use of our products.

Our complete list of Terms and Conditions are listed at www.dms-diemould.co.uk.



DMS-Diemould

4A Anglo Office Park
Lincoln Road
High Wycombe
Buckinghamshire
England
HP12 3RH

Tel : + 44 (0) 1494 523811
Fax : + 44 (0) 1494 452898
Web : www.dms-diemould.co.uk
e-mail : sales@dms-diemould.co.uk