

HEATLOCK®

YOUR GLOBAL HOT-RUNNER SOLUTIONS

- Very competitively priced hot runner nozzles and systems
- Short delivery times even for customised manifolds and nozzles
- Ceramic insulation for manifolds and nozzles (optional)
- Wide range of standardised nozzles and manifold blocks
- Easy replacement of heaters, nozzle tips and thermocouples
- 3D-CAD data available for all products
- With over 100 hot runner nozzles to choose from DMS offer hotrunner solutions whatever material you are processing



CUMSA

INNOVATIVE SOLUTIONS
FOR YOUR MOLDS



SLIDES >

UNDERCUTS >

EJECTION >



TRACEABILITY >



VACUUM >



ACCESSORIES >

CUMSA has always had a very clear objective of maintaining the latest technological improvements through innovation and constant research & development. Our standard parts are completely interchangeable, manufactured with the highest tolerances and precision

OUR SERVICES

Machining/Special Machining

Max dimensions 4200mm x 2100mm (**3 Tonnes**)
Tolerances +/- 0.01mm.

Profile/Grinding, Cylindrical grinding, Milling,
CNC and Surface Grinding.

Stocked steel include: 1730,2311,2312,2085,
2344, 2738, TOOLOX 33 and many more.

UK based with over 30 years experience.

Fully intergrated CAD/CAM system using the
latest **VERO** software.

Standard Ancillaries

Large UK based stock of all high quality guiding
elements inc Ejector pins and Water fittings.
Over 20,000 parts in stock for next day delivery if
ordered before 4pm.

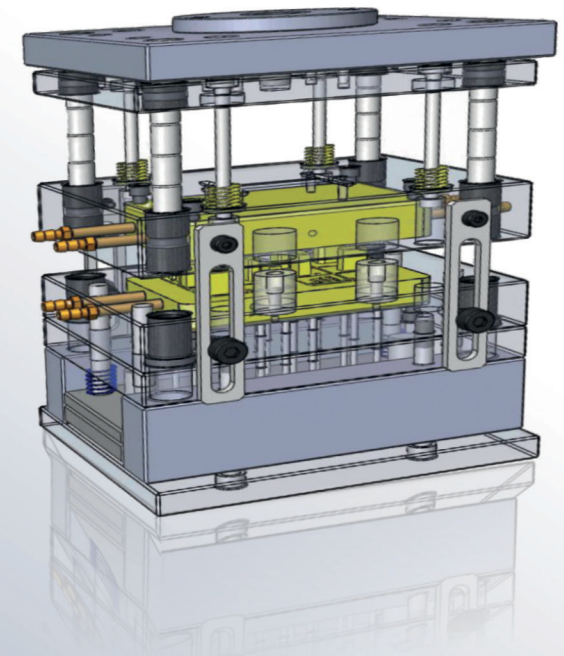
New Products

Always striving to bring new products to the
marketplace, please see within or inquire for
more details.

Custom parts also available on short lead times.



*“Serving mouldmakers,
moulders and diecasters
worldwide”*



Machining
Services

**UK based manufacturing
facilities*



Technical
Support

**Technical represenatatives
on hand to help*



Fast
Delivery

**Over 20,000 parts available
for next day delivery.*

DIEMOULD SERVICES

Unit 4, Anglo Office Park, Lincoln Road, High Wycombe,
Buckinghamshire HP12 3RH

Tel: 01494 523811 Fax: 01494 452898

E-Mail: sales@dms-diemould.co.uk

dms-diemould.co.uk

NEW PRODUCTS

NEW FOR JUNE

Now offering a brand new version of our highly acclaimed date stamp. As well as being more cost effective its central insert is adjustable but **not** interchangeable making them ideal for short cycle runs.

Part No. **FA12M/Y/MY**

NEW Extension to our range of sidelocks to help prevent mis-alignment of mould cavity shut offs

Manufactured in shock resistant cold work tool steel, heat and surface treated for wear resistance and reduced friction

- Black oxide finish
- Titanium nitride finish
- Units should be fitted on the centre line

Part No. **FACTSPEC0505/05SPEC**

NEW DLC coated ejector pins (*Diamond like carbon*)

Now available on a 7 day lead time upon request, excellent corrosion resistance and high durability due to their high surface hardness that reduces friction.

- Lower tooling costs and machine downtime
- Ideally suited for **cleanrooms**
- Blade ejectors also available
- Increased lifespan

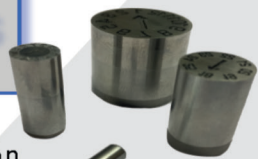
NEW Locating Register Rings (18mm)

Due to popular demand we have extended our existing large range of location rings to accommodate an 18mm thick version ensuring compatibility with our insulation boards.

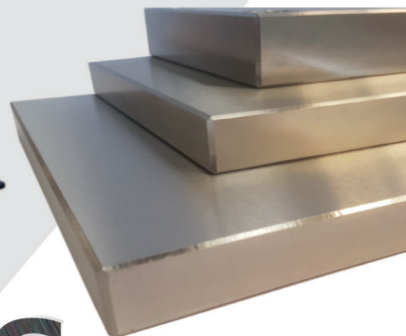
LRS
RANGE



Part No.
LRS125-0X18X26/36/46



UK'S Largest Stockist of mould plates



PROTOTYPING /RAPIDBASES

Manufactured from toolmaking quality Aluminium (**Alumec 79/89**)

Single piece fixed/moving half construction for ease of use

Interchangeable with standard DMS parts giving:

- Robust mould construction
- Choice of clamp plates
- Reuseable components from prototype to production tool

*Custom sizes available upon request

SPECIAL MACHINING

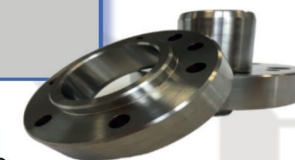
With our UK manufacturing facility in London and our continuous investment in CNC's we can offer part or fully machined mould bases to your specifications.



4200MM X 2100MM

SPECIALS

Whatever your custom component requirements, we can cater for your needs with short lead times available.



Please send your us request for quotations to sales@dms-diemould.co.uk for a quick response

